

# Alternative and Renewable Fuel and Vehicle Technology Program

## FINAL PROJECT REPORT – APPENDIX R EV Charging Station Site Maps

### Electric Vehicle Readiness Plan for Ventura, Santa Barbara, and San Luis Obispo Counties (Central Coast)



Prepared for: California Energy Commission

Prepared by: EV Communities Alliance

With Contributions from the Plug-in Central Coast Coordinating Council  
Steering Committee Represented by Ventura County APCD, Santa Barbara  
County APCD, San Luis Obispo County APCD, Community Environmental  
Council, and the Central Coast Clean Cities Coalition (C5).

APRIL 2014

CEC-XXX-XXXX-XXX

Cover Photo Credit: Stan Cowen, VCAPCD

***Prepared by:***

***Primary Author(s):***

Richard Schorske, EV Communities Alliance  
Michael Chiacos, Community Environmental Council  
Stan Cowen, Ventura County APCD  
Aeron Arlin Genet, San Luis Obispo County APCD  
Melissa Guise, Central Coast Clean Cities Coalition  
Ron Tan, Santa Barbara County APCD  
Molly Pearson, Santa Barbara County APCD

***Agreement Number: ARV-11-002***

***Prepared for:***

**California Energy Commission**

Lindsee Tanimoto  
***Agreement Manager***

Jennifer Masterson  
***Office Manager***

Randy Roesser  
***Deputy Director***  
***FUELS and TRANSPORTATION DIVISION***

Robert P. Oglesby  
***Executive Director***

**DISCLAIMER**

This report was prepared as the result of work sponsored by the California Energy Commission. It does not necessarily represent the views of the Energy Commission, its employees or the State of California. The Energy Commission, the State of California, its employees, contractors and subcontractors make no warrant, express or implied, and assume no legal liability for the information in this report; nor does any party represent that the uses of this information will not infringe upon privately owned rights. This report has not been approved or disapproved by the California Energy Commission nor has the California Energy Commission passed upon the accuracy or adequacy of the information in this report.

## **Acknowledgement**

**Funding and Administration of the Plug-in Central Coast Planning Process:** Plug-in Central Coast (PCC) was initiated in 2011 as the regional PEV Coordinating Council for Ventura, Santa Barbara, and San Luis Obispo counties. The planning process for Plug-in Central Coast was initiated by the joint efforts of C5 – the Central Coast Clean Cities Coalition, the Community Environmental Council of Santa Barbara, and the Air Pollution Control Districts of Ventura, Santa Barbara, and San Luis Obispo Counties. Key leaders from these organizations formed the Steering Committee of Plug-in Central Coast and obtained grants for tri-county PEV planning from the U.S. Department of Energy (DOE) and the California Energy Commission (CEC).

The DOE grant was administered by the Central Coast Clean Cities Coalition (C5) on behalf of the Plug-in Central Coast PEV Coordinating Council, while the CEC grant was administered by the Ventura County Air Pollution Control District (APCD).

## TABLE OF CONTENTS

<b>Introduction to the Charging Site Maps .....</b>	<b>1</b>
Strategic Approach to the Plug-in Central Coast EVSE Siting Plan .....	1
Siting Criteria.....	2
DC Fast Charging.....	3
Existing and Proposed Charging Infrastructure on the Central Coast .....	3
Theory of Constraints Applied to Future PEV Charging Installation Planning .....	3
PEV Charging Installation Mapping Priorities for the Central Coast .....	4
<b>Central Coast EV Charging Station Planning Maps .....</b>	<b>6</b>
Central Coast Corridor DC Fast Charger Priority Sites.....	6
Ventura County DC Fast Charger Priority Sites.....	7
Ojai (Ventura County): Existing Public Level 2 EV Charging Stations.....	8
Ventura (Ventura County): Existing Level 2 EV Charging Stations .....	9
Oxnard (Ventura County): Existing Level 2 EV Charging Stations.....	10
Camarillo (Ventura County): Existing Level 2 EV Charging Stations.....	11
Moorpark and Simi Valley (Ventura County): Existing Level 2 EV Charging Stations .....	12
Thousand Oaks (Ventura County): Public Level 2 EV & Level 3 Charging Stations .....	13
Oak Park (Ventura County): Existing Level 2 EV Charging Stations.....	14
Ojai (Ventura County): Potential Workplace EV Charging Stations .....	15
Santa Paula and Fillmore (Ventura County): Potential Workplace EV Charging Stations .....	16
Ventura – Workplace: Potential Public Level 2 EV Charging .....	17
Oxnard (Ventura County): Potential Workplace EV Charging.....	18
Port Hueneme and Point Mugu (Ventura County): Potential Workplace EV Charging .....	19
Camarillo (Ventura County): Potential Workplace EV Charging.....	20
Cities of Moorpark and Simi Valley (Ventura County): Potential Workplace EV Charging ....	21
Thousand Oaks (Ventura County): Potential Workplace EV Charging.....	22
West Ventura County Park N Ride Lots: Potential (P) and Existing (flagged) EV Charging...	23
East Ventura County Park N Ride Lots: Potential (P) and Existing (flagged) EV Charging ....	24
Ventura County Shopping Centers: Potential Public Level 2 EV Charging.....	25
Santa Barbara County DC Fast Charger Priority Sites.....	26

Santa Maria (Santa Barbara County): Existing Public Level 2 EV Charging.....	27
Cities of Lompoc, Buellton, Solvang, and Santa Ynez (Santa Barbara County): Existing Public EV Charging .....	28
City of Goleta and University of California at Santa Barbara (Santa Barbara County): Public Level 2 EV Charging.....	29
Santa Barbara (Santa Barbara County): Existing Public Level 2 EV Charging.....	30
City of Carpinteria (Santa Barbara County): Existing Public Level 2 EV Charging.....	31
Santa Maria (Santa Barbara County): Potential Workplace EV Charging .....	32
Cities of Lompoc, Solvang, and Santa Ynez (Santa Barbara County): Potential Workplace EV Charging.....	33
Goleta (Santa Barbara County): Potential Workplace EV Charging.....	34
Santa Barbara (Santa Barbara County): Potential Workplace EV Charging.....	35
City of Carpinteria and Summerland (Santa Barbara County): Potential Workplace EV Charging.....	36
Santa Barbara County Park N Ride Lots: Potential EV Charging.....	37
Santa Barbara County Shopping Centers: Potential Public Level 2 EV Charging.....	38
San Luis Obispo County DC Fast Charger Priority Sites .....	39
City of Paso Robles (San Luis Obispo County): Existing and Planned Public Level 2 EV Charging.....	40
City of Morro Bay (San Luis Obispo County): Existing Public Level 2 EV Charging.....	42
San Luis Obispo (San Luis Obispo County): Existing Public Level 2 EV Charging.....	43
Cities of Pismo Beach and Grover Beach (San Luis Obispo County): Existing Public Level 2 EV Charging .....	44
Paso Robles (San Luis Obispo County): Potential Workplace EV Charging.....	45
North San Luis Obispo County: Potential Workplace EV Charging.....	46
City of San Luis Obispo: Potential Workplace EV Charging.....	47
South San Luis Obispo County: Potential Workplace EV Charging .....	48
San Luis Obispo County (North) Park N Ride Lots: Potential EV Charging .....	49
San Luis Obispo County (South) Park N Ride Lots: Potential EV Charging .....	50
San Luis Obispo County Shopping Centers: Potential Public Level 2 EV Charging .....	51

# Introduction to the Charging Site Maps

## Strategic Approach to the Plug-in Central Coast EVSE Siting Plan

Charging infrastructure siting is essential to successful PEV deployment. To address siting requirements, the Ventura County Air Pollution Control District – a founding member of the Plug-in Central Coast Steering Committee – has developed a siting plan for the region. The siting plan is built on the understanding that the preponderance of PEV charging occurs at home. However, public charging is an essential adjunct to residential charging as a spur to PEV adoption. Therefore, the Plug-in Central Coast siting plan has developed a response to these key questions:

- **Location:** What are optimal locations for public EVSE in the region? Options include workplaces, multi-unit residential developments, and recreational and commercial destinations, and key travel corridors, on either public or private property.
- **Quantity:** How many EVSE are needed to support PEV drivers?
- **Level of charging:** What charging rates are appropriate for various kinds of charging sites: Level 1, Level 2, or DC fast charging?

There is no single right answer to these questions, as the requirements for EVSE infrastructure will shift over time in response to changes in battery range and cost, charging technology, and PEV and EVSE deployment trends. Therefore, the siting plan provides an overview of the different PEV market segments and recommends criteria and locations for consideration by public agencies and private entities when siting future PEV charging infrastructure in the Central Coast.

The goal of this siting plan is to help guide and coordinate future PEV charging infrastructure-siting efforts based on projected demand. To that end, this siting analysis combines various parameters such as PEV usage, EVSE usage, land use, and regional travel patterns to identify the most appropriate areas to:

- **Extend the range of PEVs** for intra- and inter-regional travel along various corridors;
- **Maximize all-electric miles** by providing ample opportunities for charging while minimizing the risk of stranded PEVs; and
- **Provide charging opportunities for PEV owners who lack access to home charging.**

## Siting Criteria

The Plug-in Central Coast siting plan is designed to identify optimal places to deploy EVSE for the consideration of various stakeholders. This exercise is not intended to mandate specific locations for deployment, which is outside the authority of Plug-in Central Coast -- but rather to guide infrastructure siting more broadly at the sub-regional level. As noted above, the siting plan focuses on workplace charging and publicly accessible charging (also referred to as opportunity charging), and includes locations proximate multiple-unit dwellings (MUDs). The number of EVSE needed to support PEV deployment will change based on parameters such as the PHEV/BEV balance, all-electric range, and charging cost factors. EV Service Providers (EVSPs) are still developing their business models, and the price that consumers are willing to pay for vehicle charging is not yet fully determined. These factors will also be important in determining how rapidly EVSE are deployed in the region.

Workplace charging deployment is especially important as a means to increase electric miles driven for PHEVs and to extend the commute range and usability of BEVs.

Opportunity charging is distinguished from residential and workplace charging and covers a wide range of situations where a PEV driver may need to charge when away from home and work. Within this category are retail parking lots, on-street parking, transit center parking, cultural and recreational centers, etc.

This Plan provides some general guidance with respect to whether chargers should be Level 1, Level 2, or a mix of these – for anyone who is considering installing EVSE. **Table 1** below (developed by ICF International) shows that the preference for one type of charging over another will be mainly biased by the duration of time that the PEV driver may be parked at that specific location:

**Table 1: Preferred Charging Methods at Various Locations**

Category	Typical Venues	Available Charging	Charging Method
Opportunity and Destination	Shopping Centers Airport (short term parking) Street/Meters Cultural and Sports Centers Parking Garages Hotels/Recreation Sites	0.5 – 2 hours < 1 hour 1– 2 hours 1– 5 hours 2 – 10 hours 8 – 72 hours	Level 2/DC Fast Level 2/DC Fast Level 2/DC Fast Level 1/Level 2 Level 2/Level 1 Level 2/Level 1 Level 2/Level 1
Corridor/Pathway	Interstate Highways Commuting/Recreation Roads	< 0.5 hours < 0.5 hours	DC Fast/Level 2 DC Fast/Level 2
Emergency	Fixed Mobile	< 0.1 hours < 1 hour	DC Fast Level 2/DC Fast

## **DC Fast Charging**

Fast charging is particularly well-suited to serve inter- and intra-regional travel corridors, as an alternative for PEV owners who do not have access to charging at home, and for emergency charging situations. In the short term, Fast Charging is not yet standard on all PEVs, and is an extra cost option on many models. DC fast charging – via the established Japanese Chademo standard or the emerging SAE Combo standard -- is the most readily available technology at this time. The California Energy Commission is requiring that many new state-funded DC Fast Chargers have dual compatibility to serve both SAE Combo and Chademo vehicles, which should reduce chances for obsolete or under-utilized hardware. However, AC fast charging (up to 22 KWh charge rates – which is approximate half the speed of current Fast Chargers) and even battery switch (newly proposed by Tesla) may also emerge as significant technologies in the future. Finally, it is important to note that as Fast Charging is deployed more densely in the region, and more PEV models are equipped for Fast Charging, there may be a reduced demand on the Level 1 and Level 2 opportunity-charging network.

## **Existing and Proposed Charging Infrastructure on the Central Coast**

The principal goal of the Plug-in Central Coast PEV Readiness Plan is to encourage and facilitate mass adoption of Plug-in Electric Vehicles in the tri-county Central Coast region. The installation of PEV charging infrastructure near major highways in the tri-counties is a critical factor to support this goal. The development of this plan has coincided with the construction of almost 200 Level 2 charging stations and several DC Fast Charge stations along the Central Coast. This initial infrastructure has not only provided range-extending electrical miles for PEVs, but it also serves to showcase the technology and raise public awareness. Maps of existing PEV charging sites provide the baseline case. The process of installing these stations has also provided crucial information on the steps needed for the future construction of new charging locations. This appendix contains four sets of maps of the tri-county region including:

- 1) Existing or Near Complete PEV Charging Sites
- 2) Potential Workplace Charging Sites
- 3) Potential Charging Sites at Park and Ride Lots
- 4) Potential and Existing Commercial Center Locations

## **Theory of Constraints Applied to Future PEV Charging Installation Planning**

One of the principal lessons learned from the initial build-out of PEV charging stations in the Central Coast and other areas across the country is the existence of several constraints that limit the construction of new PEV charging stations. Motivated site hosts were crucial to the development of existing installations. However, many other desirable sites were canvassed in the process of placing these first 200 stations, and most of the sites that did not move



forward were due to site owner reluctance – due to the lack of necessary resources, lack of available staff to work on the project, or absence of demand from customers or stakeholders to push forward and assume the responsibility for constructing (and in most cases) operating and maintaining an EV charging station.

The theory of constraints according to E.M. Goldratt states, “The throughput of any system is determined by one constraint (bottleneck).”<sup>1</sup> This mapping portion of the PEV Readiness Plan was created with this theory in mind. Rather than deplete limited grant resources on computer modeling, the mapping work below integrates local knowledge of population centers, major traffic arteries, and large employers that has been gained in more than two years of intensive siting efforts by Plug-in Central Coast and its member agencies. This has enabled Plug-in Central Coast to focus planning resources on identification and outreach to those locations that are most likely to: a) serve the maximum number of PEV drivers; and, b) be most welcome by prospective site hosts, taking into account local knowledge of previous siting efforts.

## **PEV Charging Installation Mapping Priorities for the Central Coast**

The first set of maps on existing installations provides a snapshot of current infrastructure, and illustrates where future infrastructure bottlenecks may occur. Many existing sites were developed under the California Energy Commission’s *Reconnect California* grant program, which upgraded legacy PEV charging stations constructed over a decade ago, at very little cost to the site owner.

The second set of maps focuses on potential workplace PEV charging stations, where employers may install PEV charging stations for employees and authorized visitors to use. These EVSE sites may provide the largest impact on PEV adoption and the most significant increase in electric miles travelled (EMT), both for battery EVs and plug-in hybrids. This set of workplace charging maps identifies the largest employers on the Central Coast, which typically have the greatest resources for potential infrastructure investment, and the largest number of current and prospective PEV drivers. Initial surveys indicate that technology companies with more white-collar employees are more likely to install workplace charging.

The third set of maps identifies Park and Ride lots that may be potential sites for EV charging stations adjacent to major highway corridors. Some of these may be ideal locations for DC Fast Charge stations, particularly in cases where they are proximate to amenities such as coffee shops. As many of these sites are government owned and maintained, they are appropriate candidates for public investment, and the process of obtaining approvals can be simpler. Many previous efforts at Fast Charge development at commercial centers have been

---

<sup>1</sup> Eliyahu Goldratt and Jeff Cox. The Goal: A Process of Ongoing Improvement, (Great Barrington, MA, North River Press, 1984).

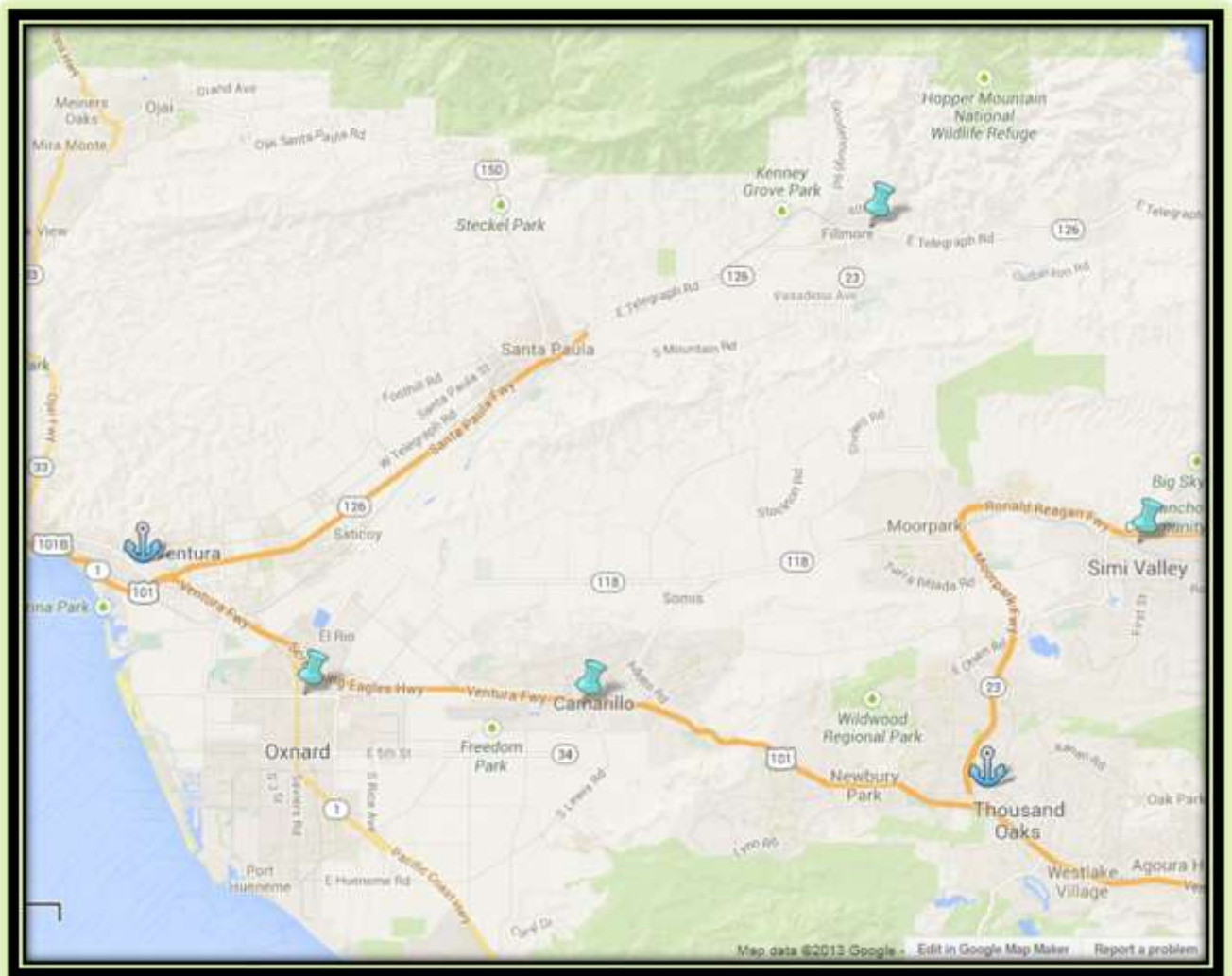
stymied by site owner reluctance to surrender parking spaces in long-duration agreements, in return for either no revenue or very limited revenue sharing.

Large retail shopping centers on the Central Coast are plotted in the fourth set of maps to highlight opportunities for additional Level 2 or (potentially) Fast Charge locations. Many of the region's retail shopping centers want to attract EV drivers as customers and present a "green" image. While larger shopping centers are shown in the maps, some neighborhood retail centers may also be ideal candidates for infrastructure placement as the most desirable locations are built out.

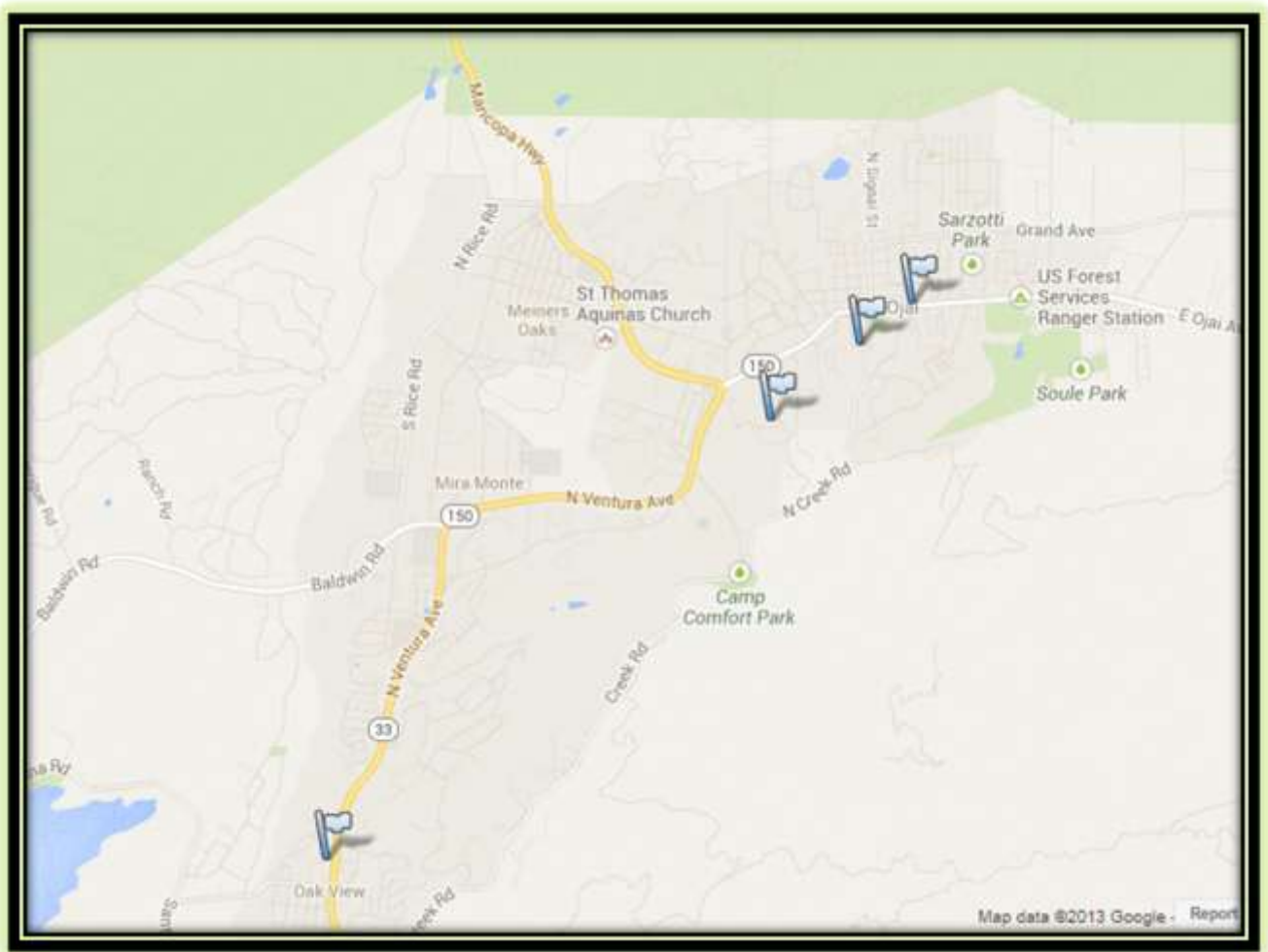


## Ventura County DC Fast Charger Priority Sites

First Tier (Anchors) and Second Tier (Push Pins)



## Ojai (Ventura County): Existing Public Level 2 EV Charging Stations



Ojai Park N Ride, 500 E. Ojai Avenue, Ojai

Ojai City Hall, 401 S. Ventura Avenue, Ojai

Ojai Valley Inn & Spa, 905 Country Club Road, Ojai

Casitas Water District, 1055 Ventura Avenue, Oak View

## Ventura (Ventura County): Existing Level 2 EV Charging Stations



Patagonia, 259 W. Santa Clara St, Ventura

Ventura City Hall, 501 Poli Street, Ventura (Public and Workplace Charging)

Downtown Parking Garage, 555 Santa Clara St, Ventura

Beachfront Parking Structure, 460 E. Harbor Blvd, Ventura

City of Ventura – Public Works, 336 San Jon Road, Ventura (Public and Workplace Charging)

Island Packers, Ventura Harbor, 1691 Spinnaker Drive, Ventura

Ventura County Medical Center, 3291 Loma Vista Road, Ventura

Pacific View Mall, S. Mills Road and E. Main St, Ventura

Ventura County APCD, 669 County Square Drive, Ventura

Ventura County Government Center, 800 S. Victoria Ave, Ventura

Ventura Police/Fire Headquarters, 1401 Dowell Drive, Ventura (Workplace Charging Only)

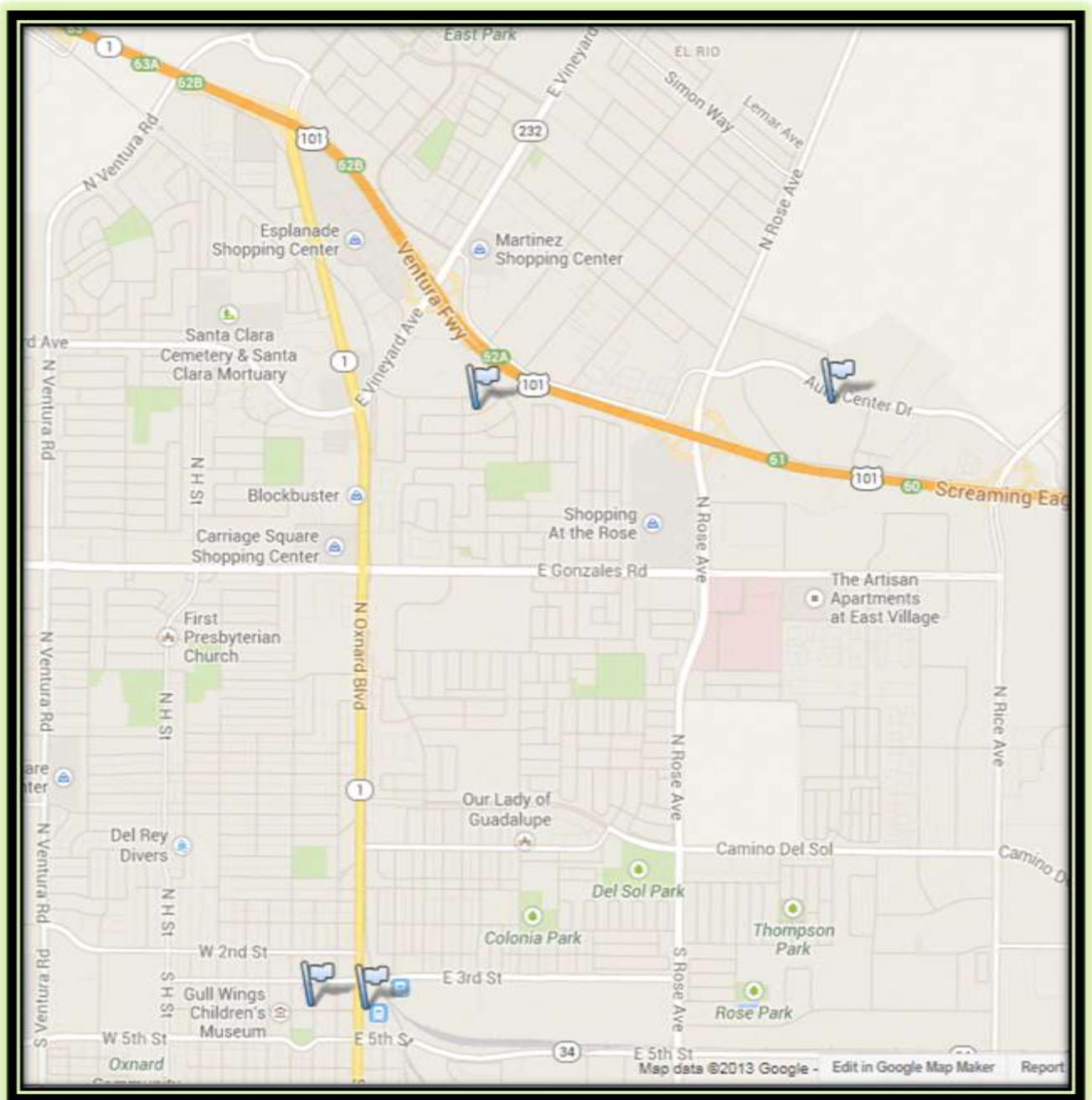
Ralston Courtyard, 5525 Ralston Ave, Ventura (Apartment Residents Charging Only)

California Board of Equalization, 4820 McGrath St, Ventura

East Ventura Metrolink Station, 6175 E. Ventura Blvd, Ventura



## Oxnard (Ventura County): Existing Level 2 EV Charging Stations



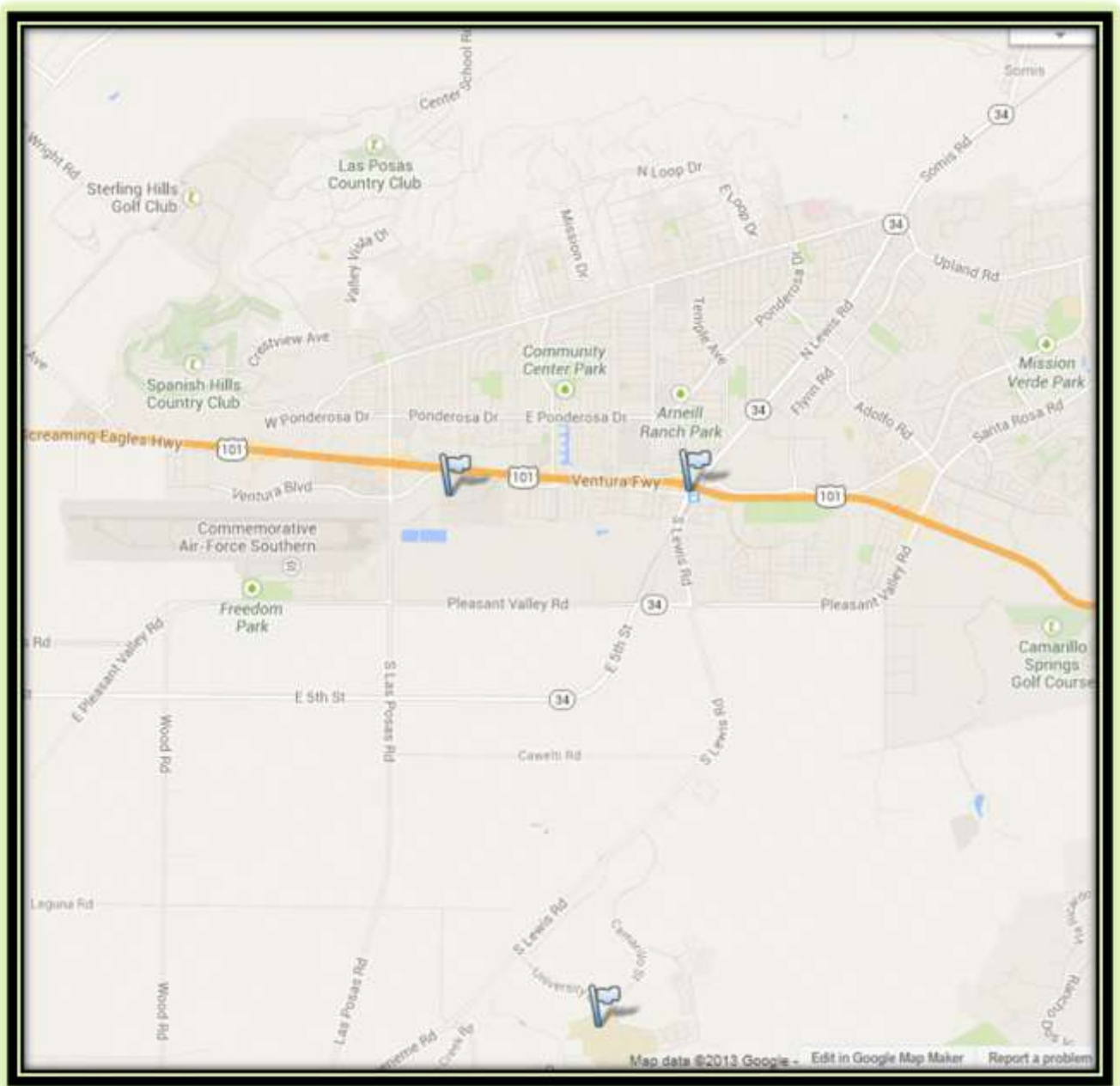
Team Nissan, 1801 Auto Center Drive, Oxnard

Courtyard by Marriott, 600 E. Esplanade Drive, Oxnard

Parking Garage, 4<sup>th</sup> and B Streets, Oxnard

Oxnard Transportation Center, 600 E. Esplanade Drive, Oxnard

## Camarillo (Ventura County): Existing Level 2 EV Charging Stations



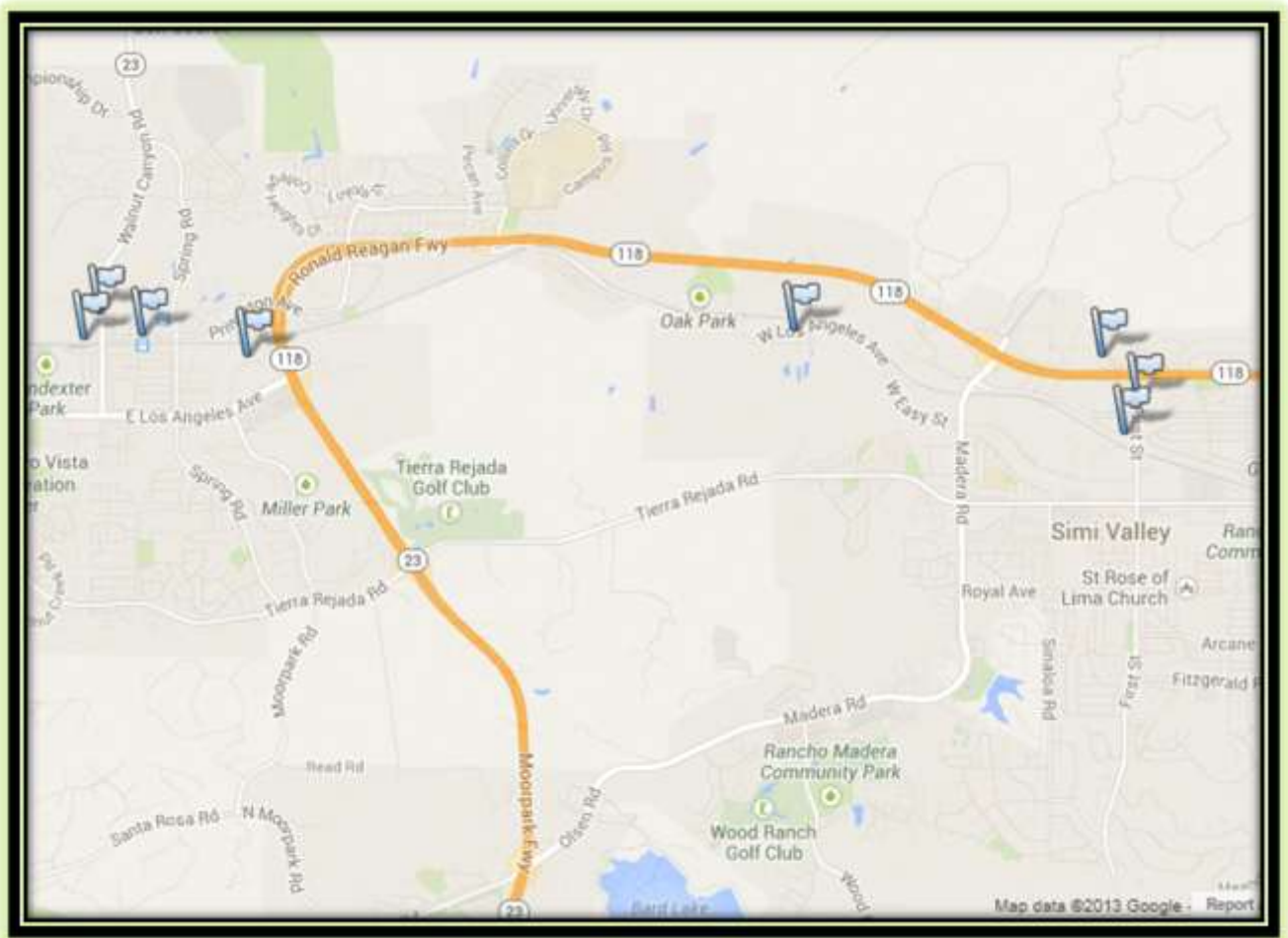
Camarillo Premium Outlets, 740 E. Ventura Blvd, Camarillo

Camarillo Metrolink Station, 30 Lewis Road, Camarillo (planned)

California State University at Channel Islands, One University Drive, Camarillo



## Moorpark and Simi Valley (Ventura County): Existing Level 2 EV Charging Stations



Moorpark Metrolink Station, 300 High Street, Moorpark

A.G. Machining, 609 Science Drive, Moorpark

Post Office, 100 W. High Street, Moorpark

City Hall, 799 Moorpark Avenue, Moorpark

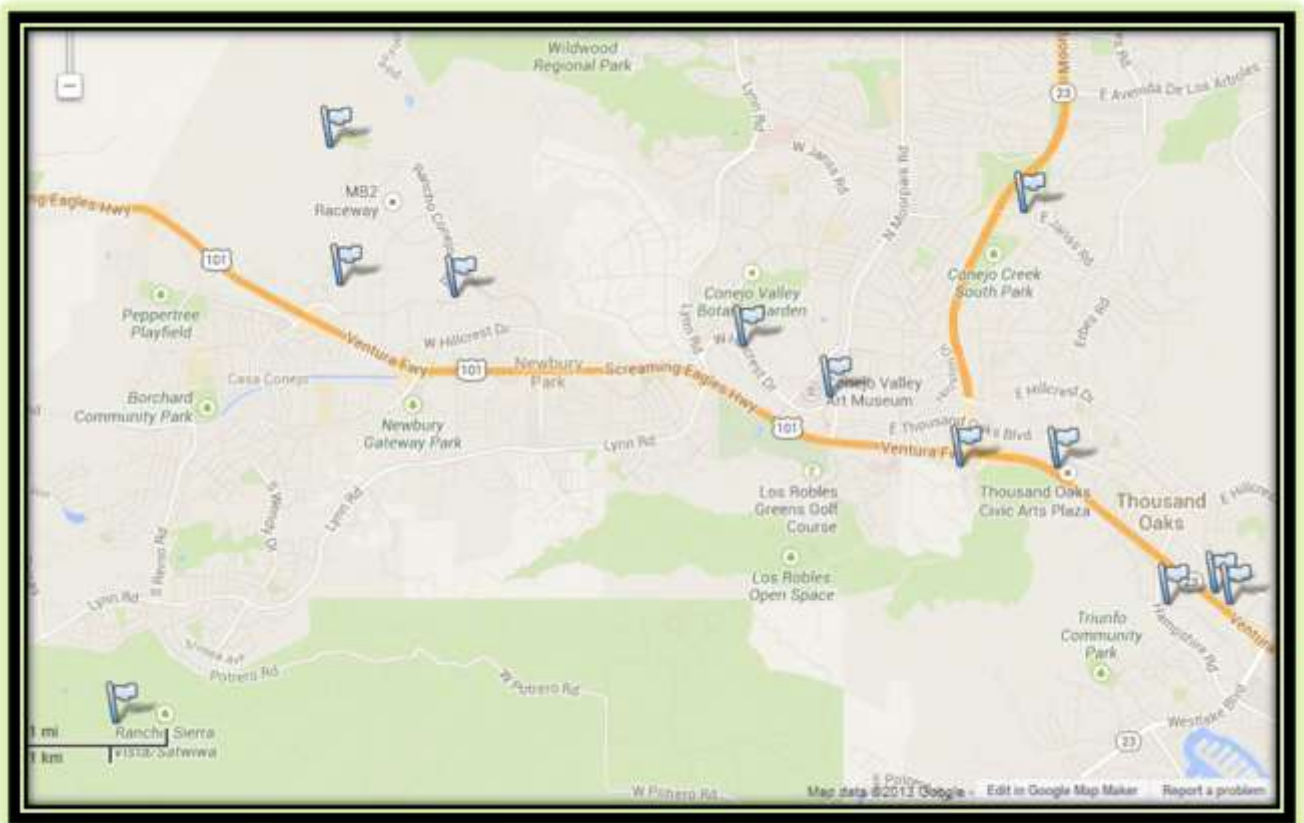
City of Simi Valley – Maintenance, 500 W. Los Angeles Ave, Simi Valley

First Nissan, 2325 First Street, Simi Valley

Simi Valley Ford, 2440 First Street, Simi Valley

Grand Vista Hotel, 999 Enchanted Way, Simi Valley

## Thousand Oaks (Ventura County): Public Level 2 EV & Level 3 Charging Stations



Municipal Services Center, 1993 Rancho Conejo Blvd, Thousand Oaks

Home Depot, 2745 Teller Road, Thousand Oaks

Rancho Sierra Vista/Satwiwa, 4126 Potrero Road, Thousand Oaks

Amgen, One Amgen Center Drive, Thousand Oaks (Employee Workplace Charging Only)

National Park Service, 401 W. Hillcrest Drive, Thousand Oaks

Janns Marketplace, 215 N. Moorpark Road, Thousand Oaks

Park N Ride, 1405 E. Janns Road, Thousand Oaks (scheduled)

Thousand Oaks City Hall and Civic Arts Plaza, 2100 Thousand Oaks Blvd, Thousand Oaks

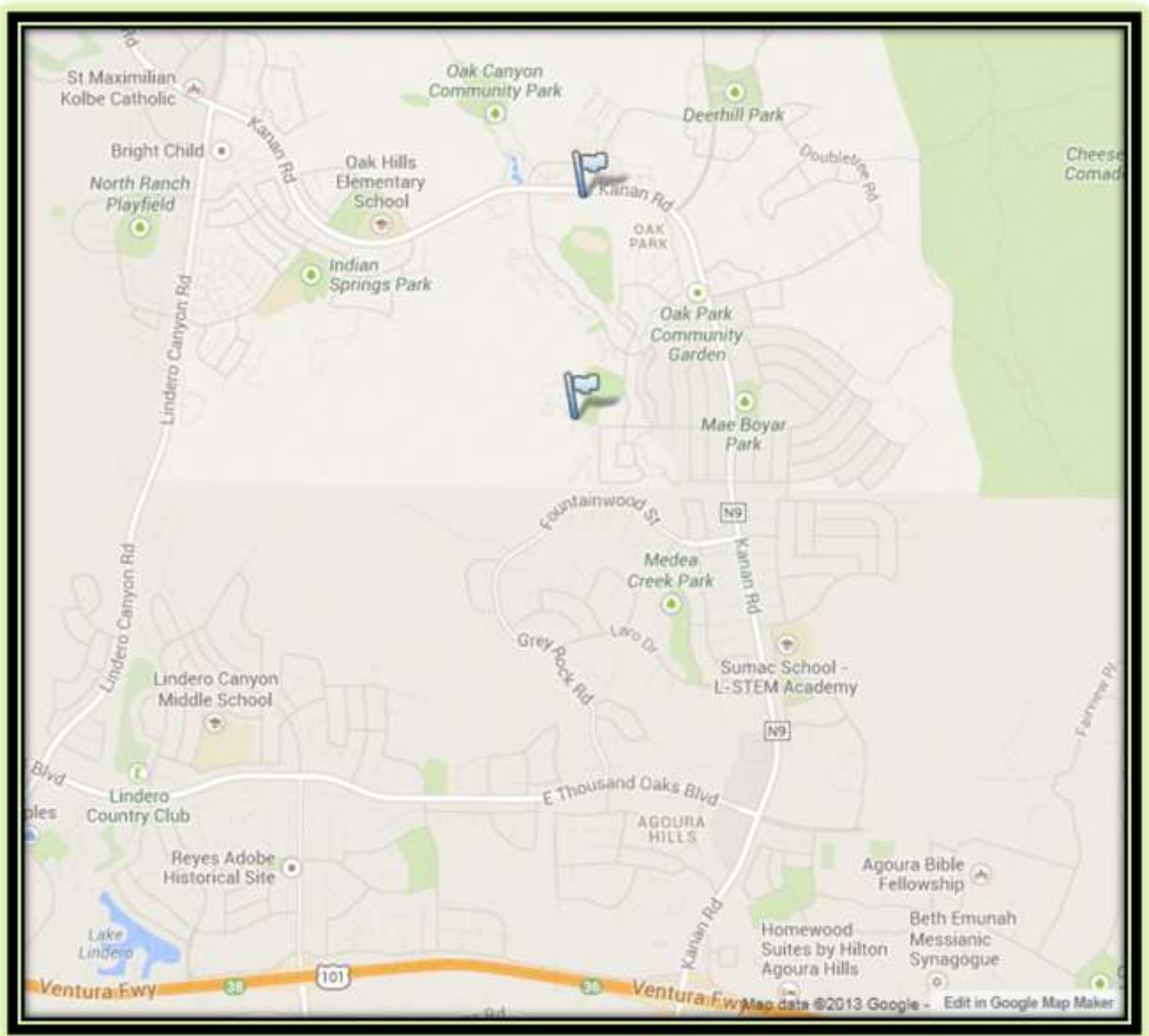
Thousand Oaks Transportation Center, 265 S. Rancho Road, Thousand Oaks (Levels 2 & 3)

Rusnak BMW, 3645 Auto Center Mall Drive, Thousand Oaks

Nissan, 3755 Auto Center Mall Drive, Thousand Oaks

The Boat Works, 2251 Townsgate Road, Westlake Village

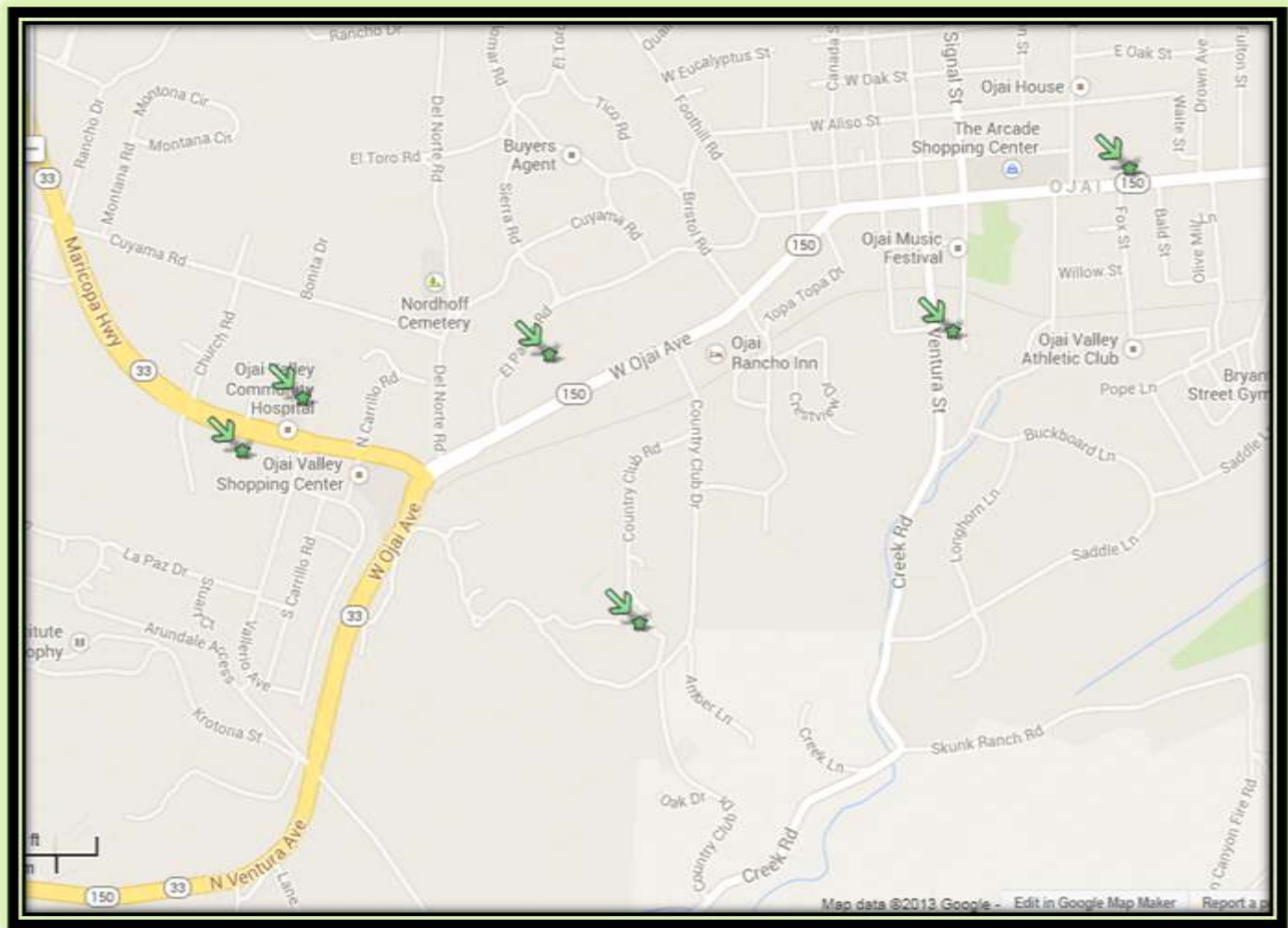
## Oak Park (Ventura County): Existing Level 2 EV Charging Stations



Oak Park High School, 889 Kanan Road, Oak Park

Oak Park Unified School District, 5701 Conifer Street, Oak Park

## Ojai (Ventura County): Potential Workplace EV Charging Stations



Ojai Valley Hospital	1306 Maricopa Hwy	Ojai
Ojai Valley Inn	905 Country Club Road	Ojai
Ojai Valley School	723 El Paseo Road	Ojai
Ojai Unified School District	414 E. Ojai Avenue	Ojai
Ojai City Hall	401 S. Ventura Avenue	Ojai
Nordhoff High School	1401 Maricopa Highway	Ojai

## Santa Paula and Fillmore (Ventura County): Potential Workplace EV Charging Stations



BendPak Inc. 1645 Lemonwood Dr Santa Paula

Santa Paula City Hall 970 Ventra St Santa Paula

Santa Paula High School 404 N. 6th St Santa Paula

Santa Paula Hospital 825 N. 10th St Santa Paula

County of Ventura Jail 600 S. Todd Road Santa Paula

Fillmore City Hall 250 Central Ave Fillmore

Fillmore High School 555 Central Avenue Fillmore

Fillmore Unified School District 627 Sespe Ave Fillmore



## Ventura – Workplace: Potential Public Level 2 EV Charging



City of Ventura City Hall  
501 Poli ST,  
Ventura

City of Ventura Police  
Dept  
1425 Dowell DR  
Ventura

Coleman Welding  
100 Rocklite Road  
Ventura

Community Memorial  
Hospital  
147 N. Brent ST  
Ventura

CoorsTek  
4544 McGrath St  
Ventura

County of Ventura 4651  
Telephone Road  
Ventura

County of Ventura –  
VCMC  
3291 Loma Vista Road  
Ventura

County of Ventura HCA  
2323 Knoll Drive  
Ventura

Patagonia  
259 W. Santa Clara  
Ventura

SCE  
10060 Telegraph Road  
Ventura

Valex Corp  
6080 Leland St  
Ventura

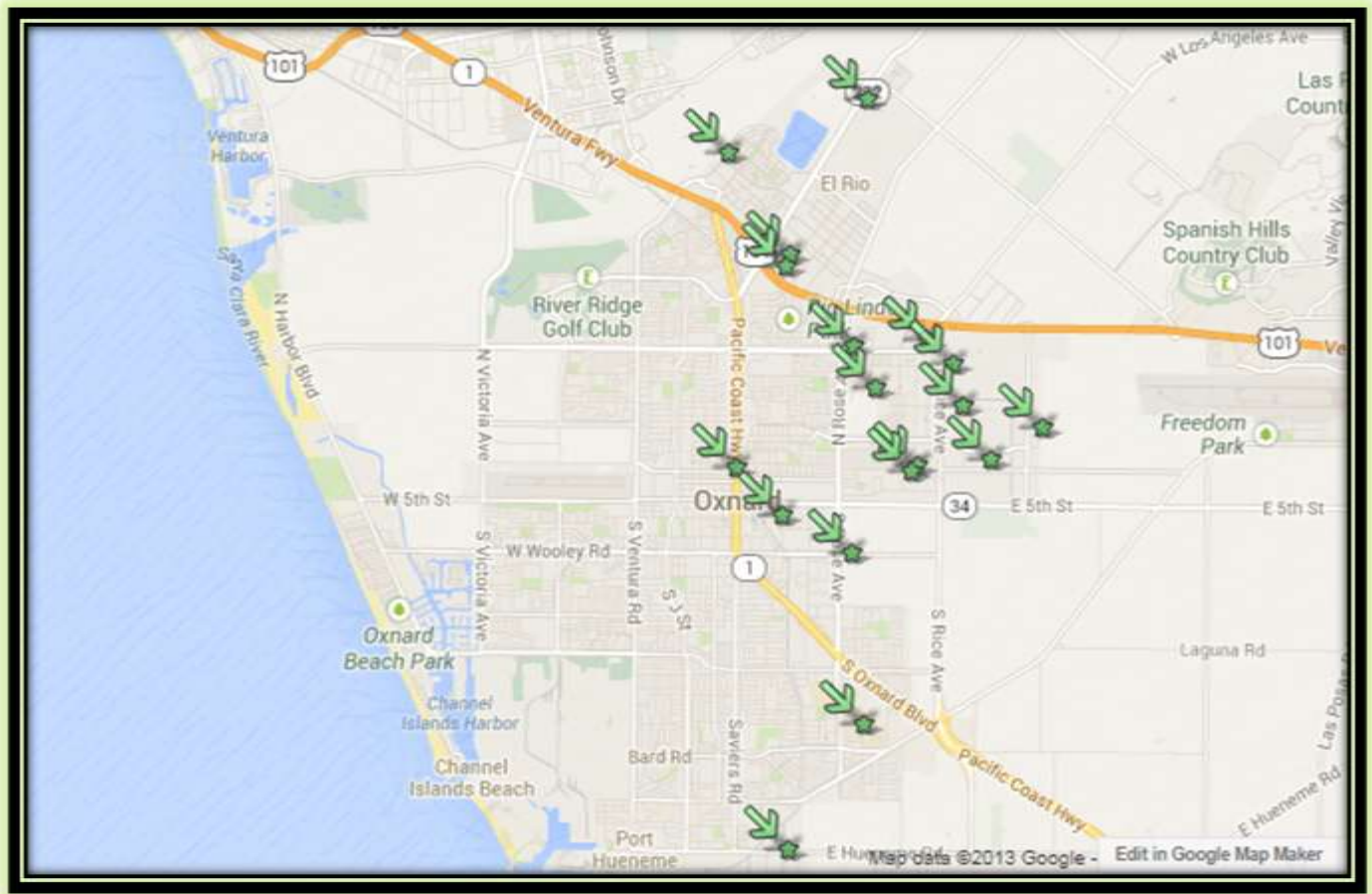
Ventura College  
4667 Telegraph Road  
Ventura

Ventura County Govt  
Center  
800 S. Victoria Dr  
Ventura

Ventura Port District  
1603 Anchors Way  
Ventura

Ventura School District  
255 W. Stanley Ave  
Ventura

## Oxnard (Ventura County): Potential Workplace EV Charging



BMW Corp  
5650 Arcturus Ave

CA State Comp Insurance  
2901 N. Ventura Road

CalAmp Corp  
1401 N. Rice Ave

Chicago Title  
500 E. Esplanade

Child Development Resources  
221 Ventura Blvd

City of Oxnard City Hall  
300 W. 3rd ST

County of Ventura-Public Health  
2240 Gonzales Road

County of Ventura-Mental Health  
1400 Vanguard

County of Ventura-Public Defender  
4333 E. Vineyard Dr

Haas Automation  
2800 Sturgis Road

J. M. Smucker Co  
800 Commercial Ave

Oxnard College  
4000 S. Rose Ave  
Oxnard

Procter & Gamble  
800 N. Rice Ave

PTI Technologies  
501 Del Norte

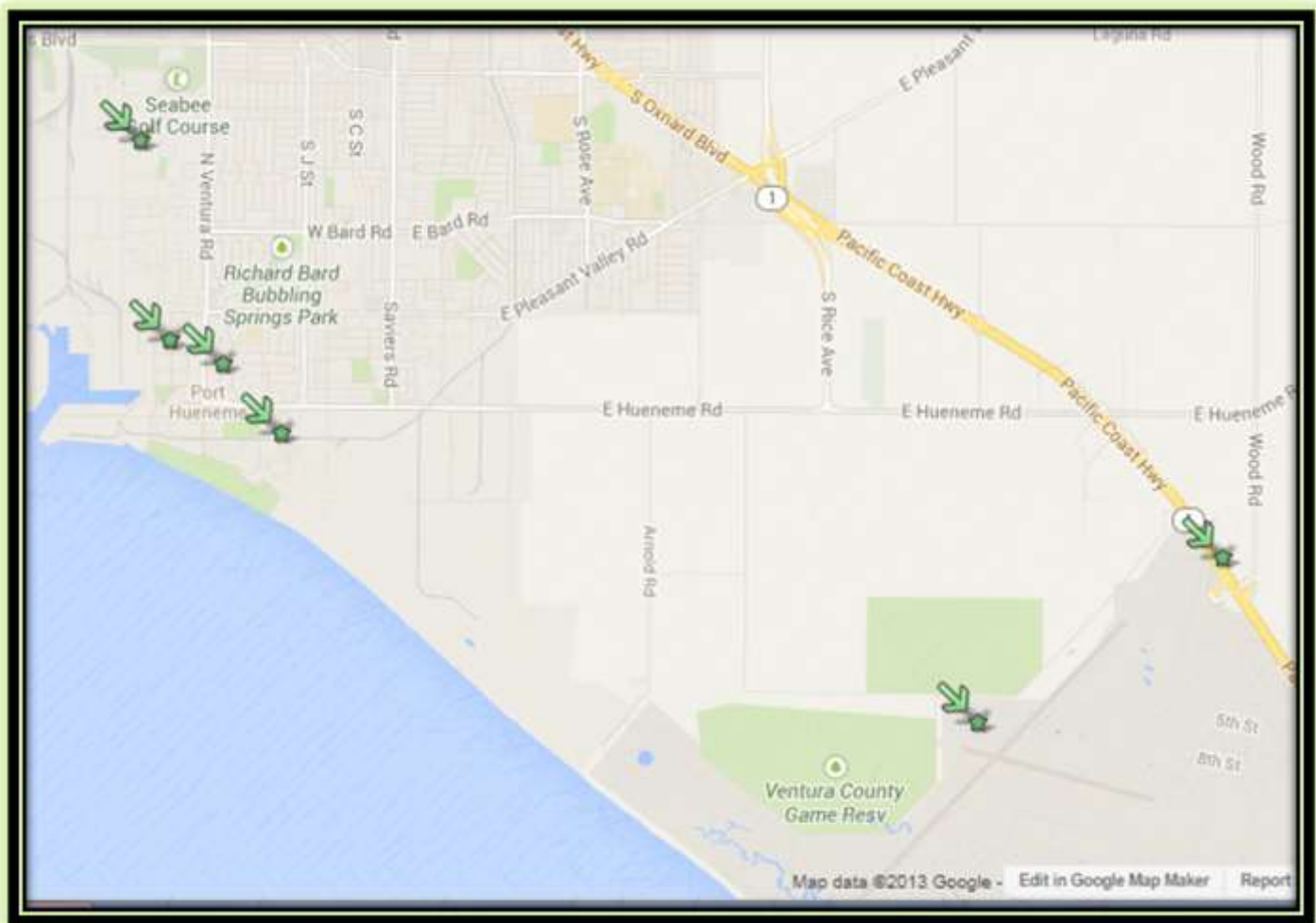
Raypak  
2151 Eastman

So Cal Gas Co HQ  
1640 E. Gonzales Road

St. Johns Hospital  
1600 N. Rose Avenue

Waterway Plastics  
2200 Sturgis Road

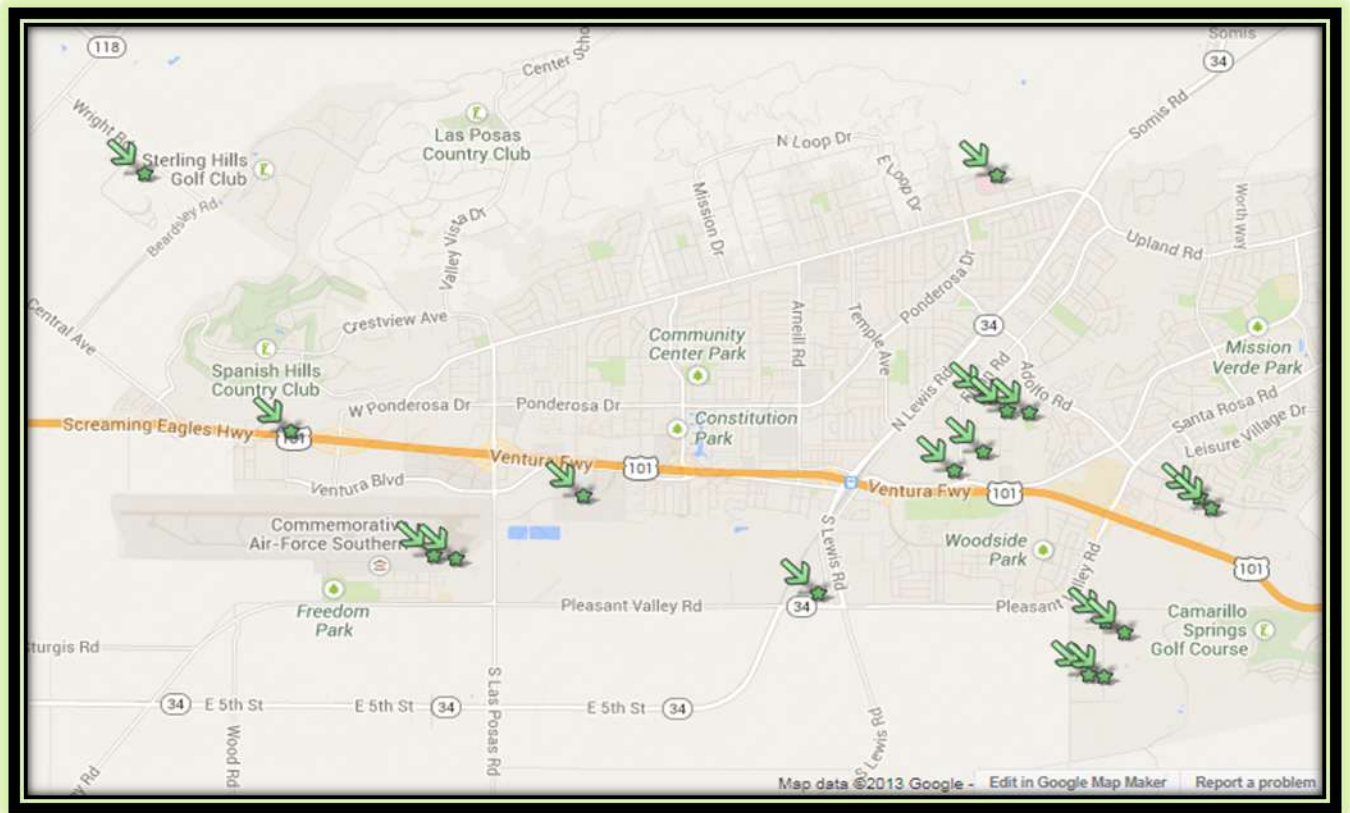
## Port Hueneme and Point Mugu (Ventura County): Potential Workplace EV Charging



Naval Air Station	Point Mugu
Cal Air National Guard	4146 Naval Air Road Port Hueneme
City of Port Hueneme City Hall	250 N. Ventura Road Port Hueneme
Consolidated Precision Products	705 Industrial Ave Port Hueneme
Naval CBC Base	Port Hueneme
Port of Hueneme	3330 Pomona St Port Hueneme



## Camarillo (Ventura County): Potential Workplace EV Charging



Advanced Motion Controls  
3805 Calle Tecate

Channel Islands Aviation  
771 E. Daily Drive

Cooper Interconnect  
750 W. Ventura Blvd

Camarillo Airport  
195 Durley Ave

Data Exchange  
3600 Via Pescador

Harbor Freight HQ  
3491 Mission Oaks Blvd

Hi-Temp Insulation  
4700 Calle Alto

Johanson Technology  
4001 Calle Tecate

OSI Electronics  
2385 E. Pleasant Valley Rd

Parker Hannifin  
3800 Calle Tecate

Pleasant Valley Hospital  
2309 Antonio Avenue

Power-One  
740 Calle Plano

Semtech  
200 Flynn Road

Skurka Aerospace  
4600 Calle Bolero

Teledyne Imaging Sensors  
5212 Verdugo Way

Ventura County Newspaper  
550 Camarillo Center Drive

Ventura County Education  
5189 Verdugo Way

Youth Correctional Facility  
3100 Wright Road

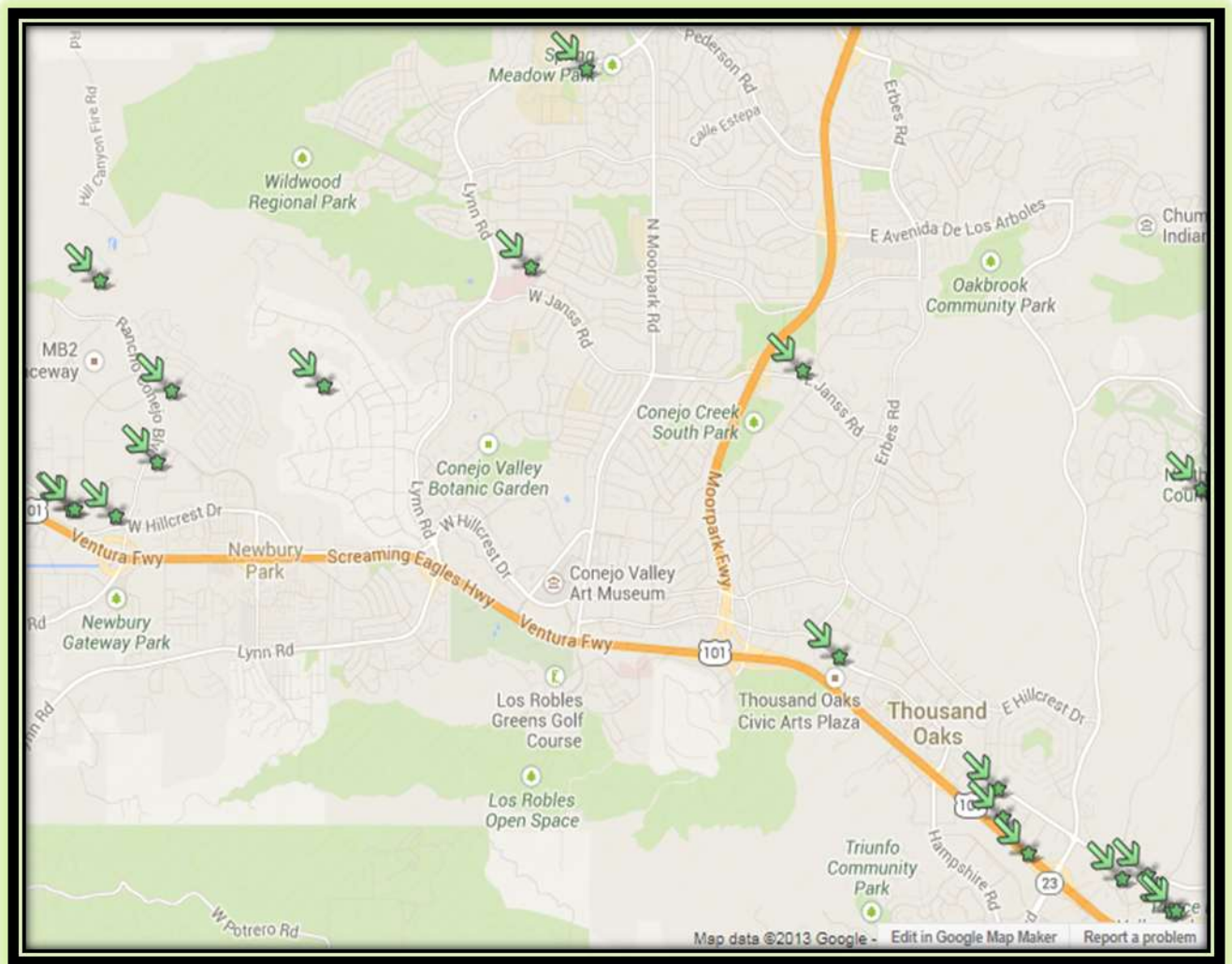
Wilwood Engineering  
4700 Calle Bolero

## Cities of Moorpark and Simi Valley (Ventura County): Potential Workplace EV Charging



CTS Electronics	200 Science Dr Moorpark	
Ensign Bickford Aerospace	14370 White Sage Road	Moorpark
Fiserv	405 Science Dr Moorpark	
Kavlico Corp	14501 Princeton Ave Moorpark	
Moorpark College	7075 Campus Road	Moorpark
Penny Mac Mortgage Corporate	6101 Condor Drive	Moorpark
Pentair Pool Products	10951 W. Los Angeles Ave	Moorpark
Aerovironment	900 Enchanted Way	Simi Valley
Bank of America Home Loans	400 National Way	Simi Valley
City of Simi Valley City Hall	2929 Tapo Canyon Road	Simi Valley
City of Simi Valley Police	3901 Alamo St	Simi Valley
Farmers Insurance	3041 Cochran St	Simi Valley
Meggitt Safety Systems	1915 Voyager Ave	Simi Valley
Milgard Manufacturing	355 Easy St	Simi Valley
Nexicore Services	4201 Guardian St	Simi Valley
Poly-Tainer/CMD	450 W. Los Angeles Ave	Simi Valley
Rexnord Industries	2175 Union Place	Simi Valley
Simi Valley Hospital	2975 Sycamore Dr	Simi Valley
Simi Valley School District	875 E. Cochran St.	Simi Valley
Waste Management	195 W. Los Angeles Ave	Simi Valley

## Thousand Oaks (Ventura County): Potential Workplace EV Charging



Aetna Service Center  
2545 W. Hillcrest Drive  
North Ranch Country Club  
4761 Valley Spring Dr

Alcoa Fasteners  
1300 Rancho Conejo  
Silver Star Automotive  
3601 Auto Mall Dr

Amgen  
1 Amgen Center Drive  
Skyworks Solutions  
2427 Hillcrest Drive

Anthem Blue Cross  
4553 La Tienda Rd  
Teledyne Scientific  
1049 Camino Dos Rios  
Baxter Healthcare Biotech  
1700 Rancho Conejo Blvd  
Verizon Corporate  
2535 W. Hillcrest Dr

Cal Lutheran University  
60 W. Olsen Road  
WellPoint Inc  
4553 La Tienda Dr.  
City Hall  
2100 E. Thousand Oaks

JD Power & Associates  
2625 Townsgate Road

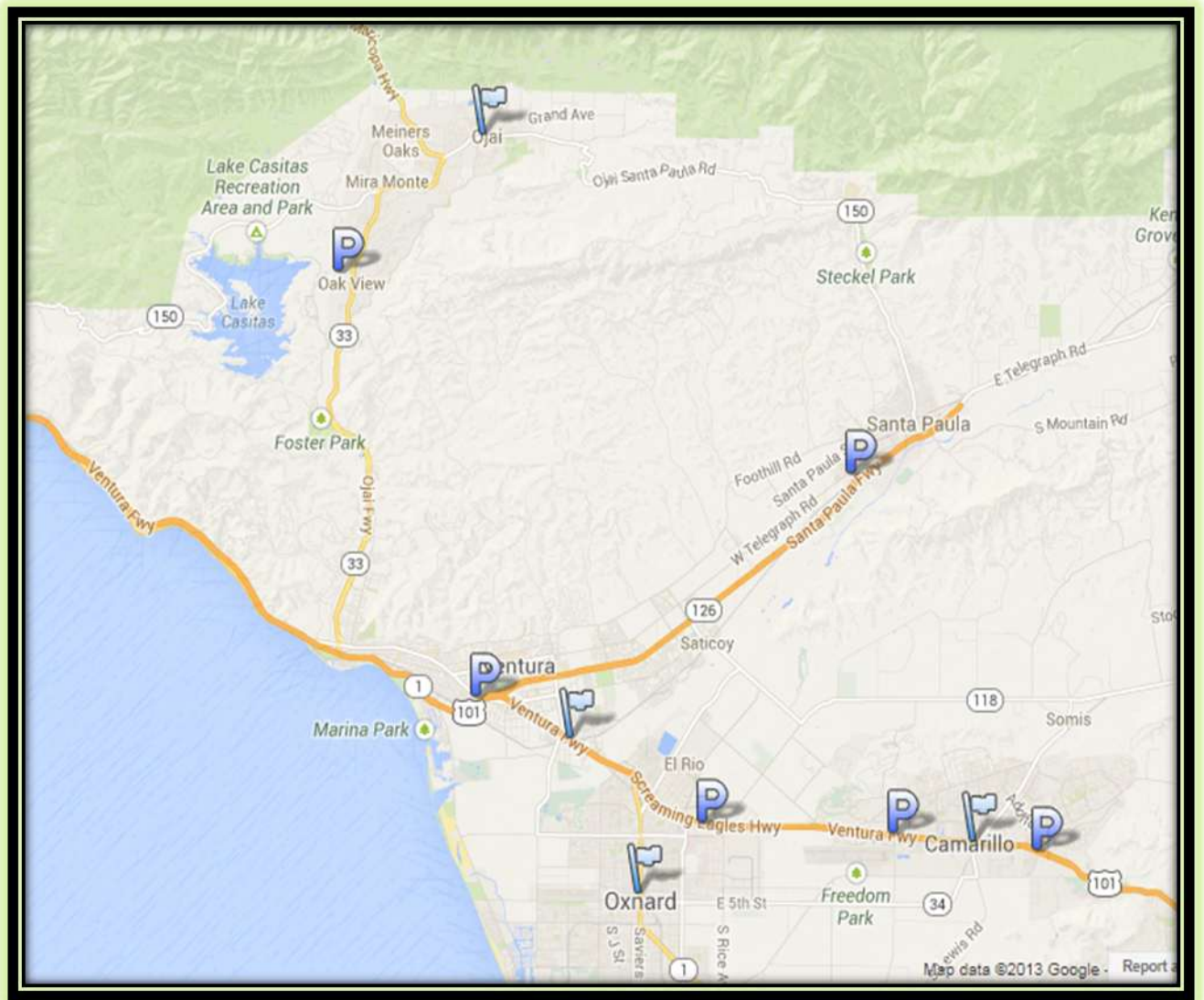
Conejo Unified School District  
1400 E. Janss Rd  
Baxter Healthcare  
1 Baxter Way

General Dynamics  
112 Lakeview Canyon Rd

Los Robles Hospital 215  
W. Janss Road



## West Ventura County Park N Ride Lots: Potential (P) and Existing (flagged) EV Charging



Ojai Park N Ride, 450 E. Ojai Avenue, Ojai (existing)

Oak View Community Center, 18 Valley Road, Oak View

National Guard Armory, 1270 Arundell Ave, Ventura

Montalvo Metrolink Station, 6175 Ventura Blvd, Ventura (existing)

K Mart, 895 Falkner Rd, Santa Paula

The Palms, Outlet Center Dr, Oxnard

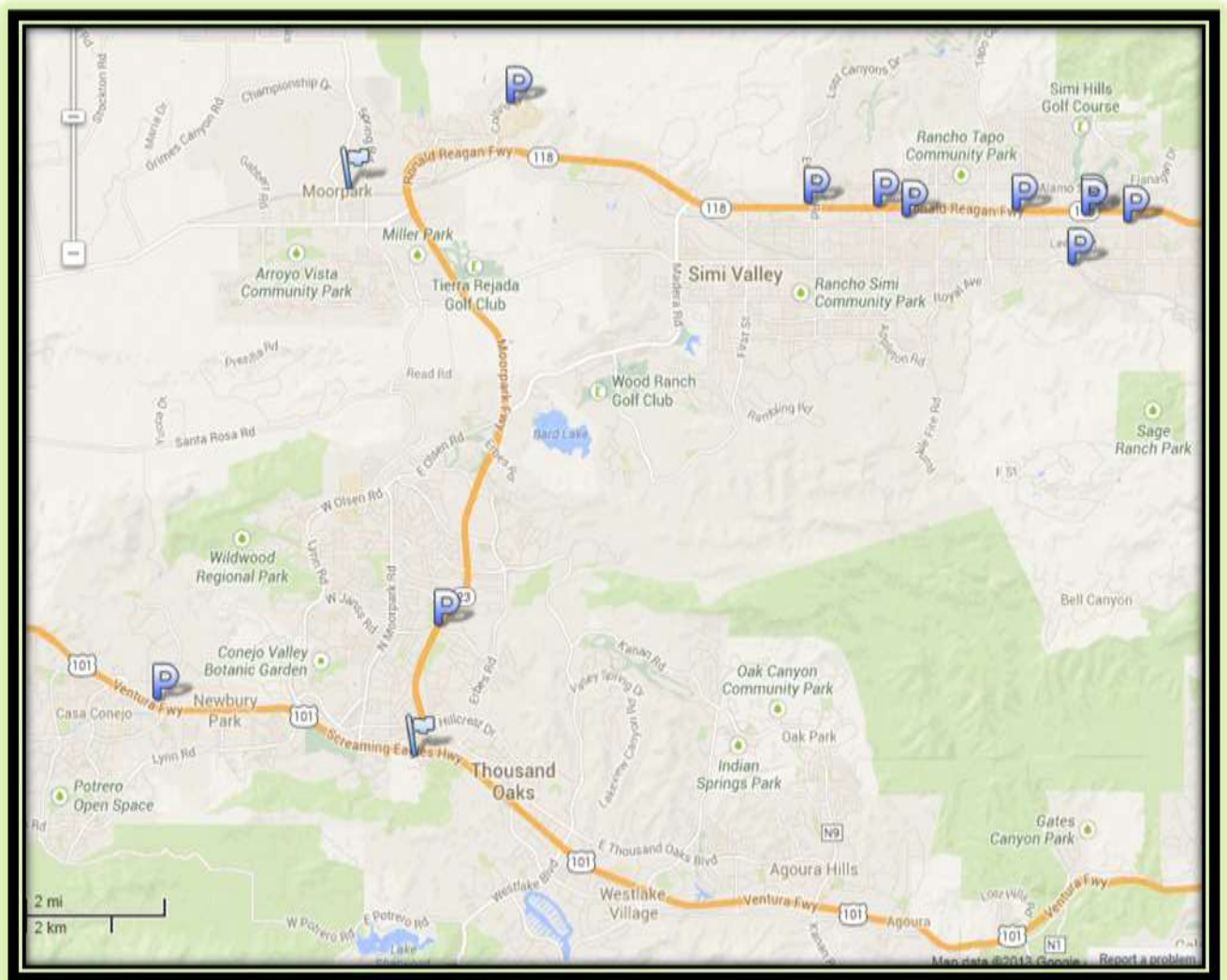
Oxnard Transportation Center, 201 E. 4th St, Oxnard (existing)

Las Posas Park N Ride, 690 Ventura Blvd, Camarillo

Camarillo Metrolink Station, 30 Lewis Rd, Camarillo (existing)

Pleasant Valley Park N Ride, Santa Rosa Rd, Camarillo

## East Ventura County Park N Ride Lots: Potential (P) and Existing (flagged) EV Charging



Moorpark College, 7075  
Campus Rd, Moorpark

Moorpark Metrolink  
Station, 300 High St,  
Moorpark (existing)

Erringer Rd Park N Ride,  
Simi Valley

Simi Valley Metrolink  
Station, 5050 Los Angeles  
Ave, Simi Valley

Stearns St. Park N Ride,  
2501 Stearns St, Simi  
Valley

Swank' Chevron Station,  
2449 Stearns, Simi Valley

Sycamore Square Center,  
3041 Cochran, Simi Valley

Sycamore Dr. Park N Ride,  
2599 Sycamore Simi Valley

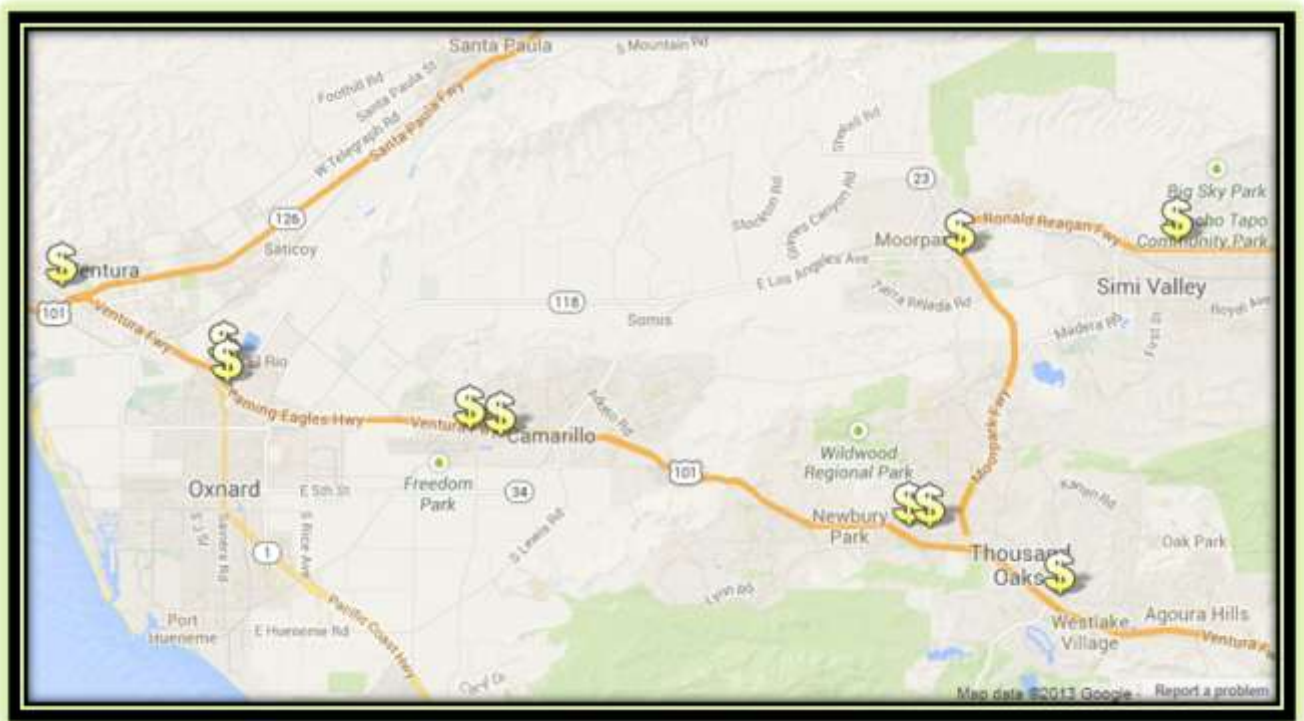
St. Peter Claver Church,  
5649 E. Pittman St, Simi  
Valley

Tapo Canyon Rd Park N  
Ride, Tapo Canyon Road,  
Simi Valley

Thousand Oaks  
Transportation Center, 265  
S. Rancho Rd, Thousand  
Oaks (existing)

Janans Rd Park N Ride,  
Janans Rd & 118 Fwy,  
Thousand Oaks

## Ventura County Shopping Centers: Potential Public Level 2 EV Charging



### Potential and Existing Electric Vehicle Charging Station Sites

Pacific View Mall, 3301 E Main Street, Ventura (existing station)

Esplanade Shopping Center, 195 W. Esplanade Drive, Oxnard

The Collection, Park View Court, Oxnard

Camarillo Town Center, 209 W Ventura Blvd, Camarillo (existing station)

Camarillo Premium Outlets, 740 Ventura Blvd, Camarillo (existing station)

The Oaks, 222 W Hillcrest Drive, Thousand Oaks

The Janss Mall, 275 N. Moorpark Road, Thousand Oaks

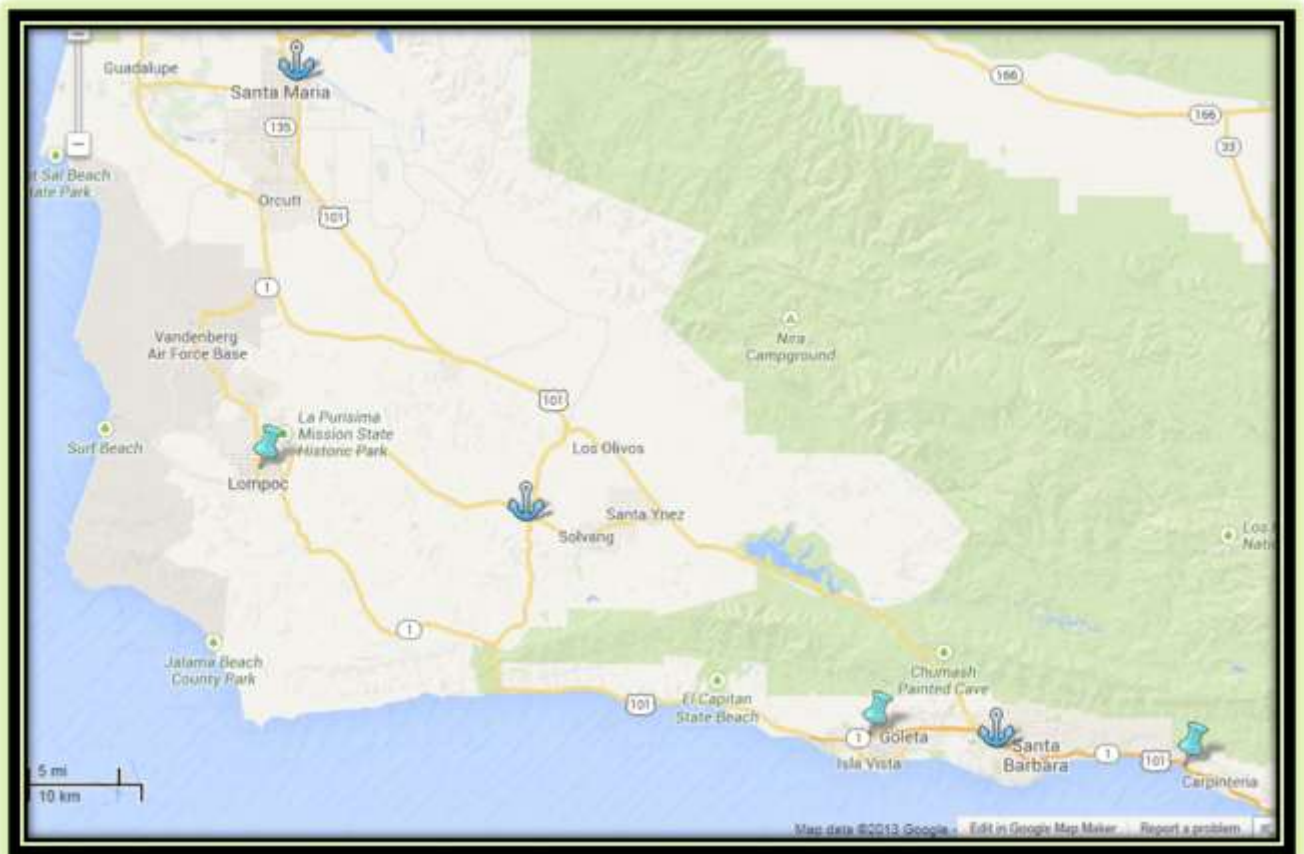
The Promenade at Westlake, 140 Promenade Way, Thousand Oaks

Moorpark Marketplace, 872 New Los Angeles Avenue, Moorpark

Simi Valley Town Center, 1555 Simi Town Center Way, Simi Valley

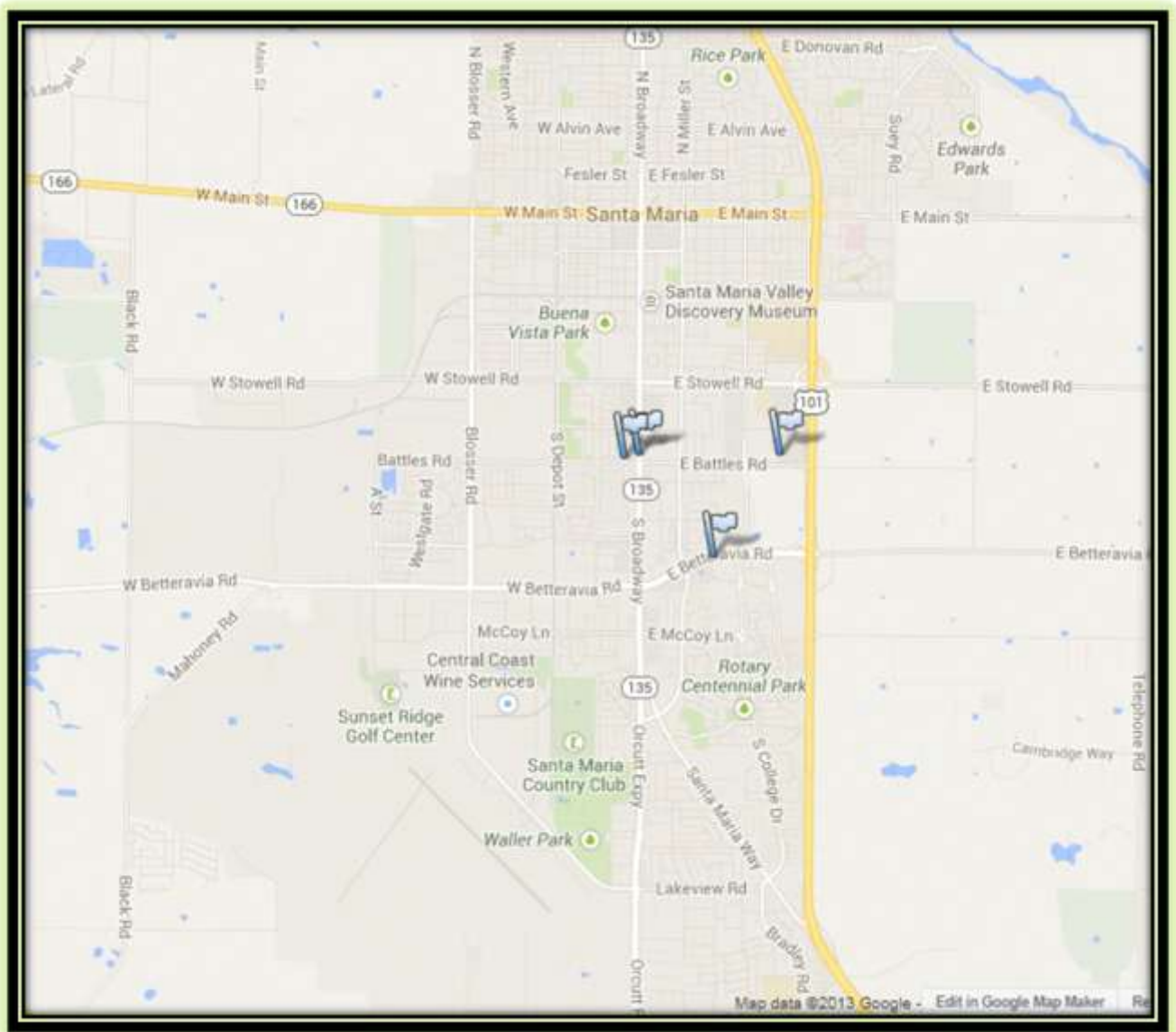
## Santa Barbara County DC Fast Charger Priority Sites

First Tier (Anchors) and Second Tier (Push Pins)





## Santa Maria (Santa Barbara County): Existing Public Level 2 EV Charging



### Existing Electric Vehicle Charging Station Sites

Pine Tree Plaza, E. Battles Road and S. Broadway, Santa Maria

Rabobank, 1554 S. Broadway, Santa Maria

Nissan, 1001 E. Battles Road, Santa Maria

Santa Barbara County Government Center, 511 Lakeside Parkway, Santa Maria



## Cities of Lompoc, Buellton, Solvang, and Santa Ynez (Santa Barbara County): Existing Public EV Charging



Santa Barbara County Health, 1201 E. Chestnut Avenue, Lompoc

Rancho Market, 2886 Mission Drive, Solvang

Parking Lot No. 3, 1556 Mission Drive, Solvang

Veteran's Hall, 1745 Mission Drive, Solvang

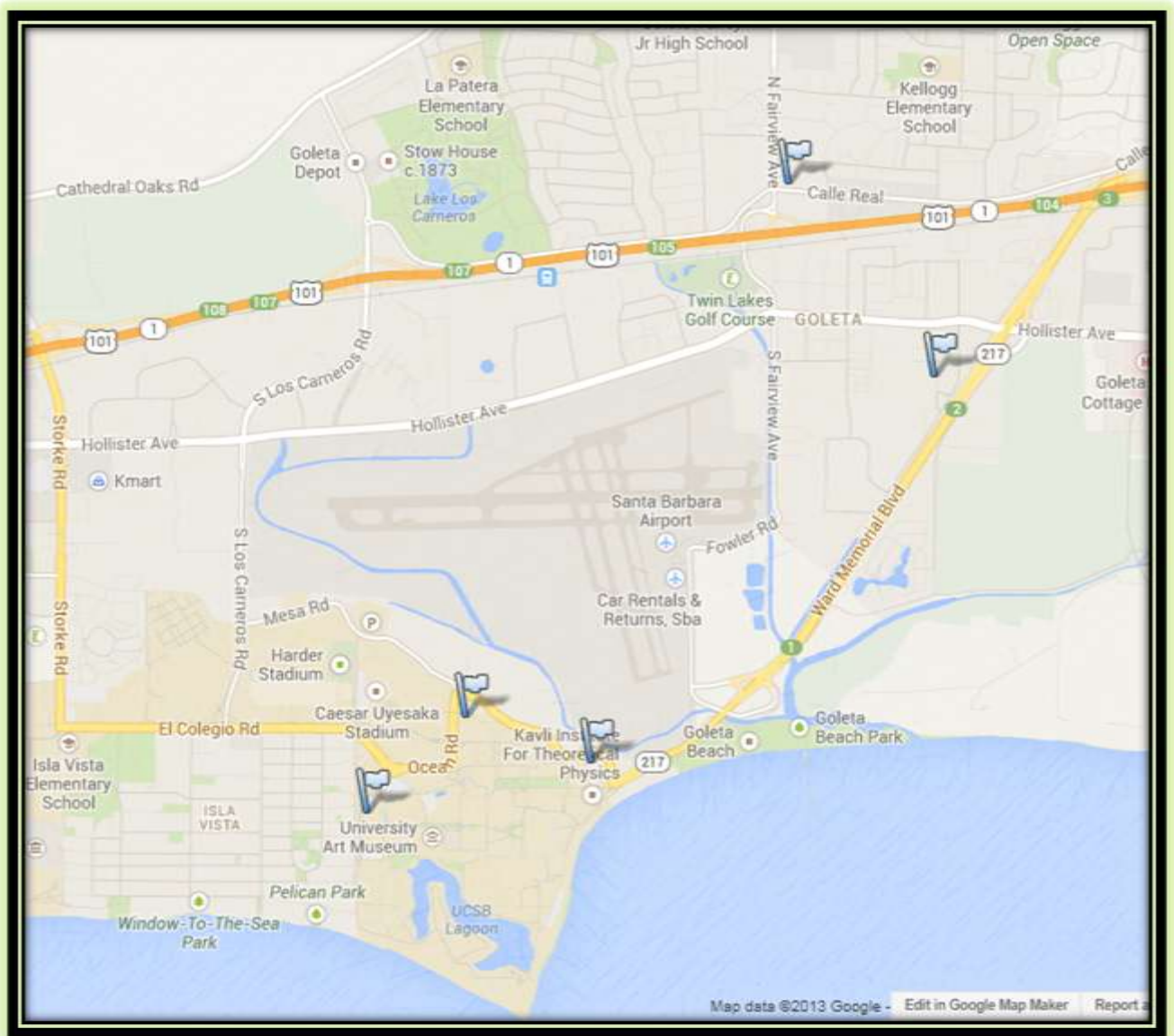
Parking Lot No. 1, Alisol Road near Mission Drive, Solvang

Santa Ynez Valley Marriott, 555 McMurray Road, Buellton

Santa Ynez Chumash, 100 Via Juana Lane, Santa Ynez

Chumash Casino and Resort, 3400 E. Highway 246, Santa Ynez

## City of Goleta and University of California at Santa Barbara (Santa Barbara County): Public Level 2 EV Charging



Rabobank, 5956 Calle Real, Goleta

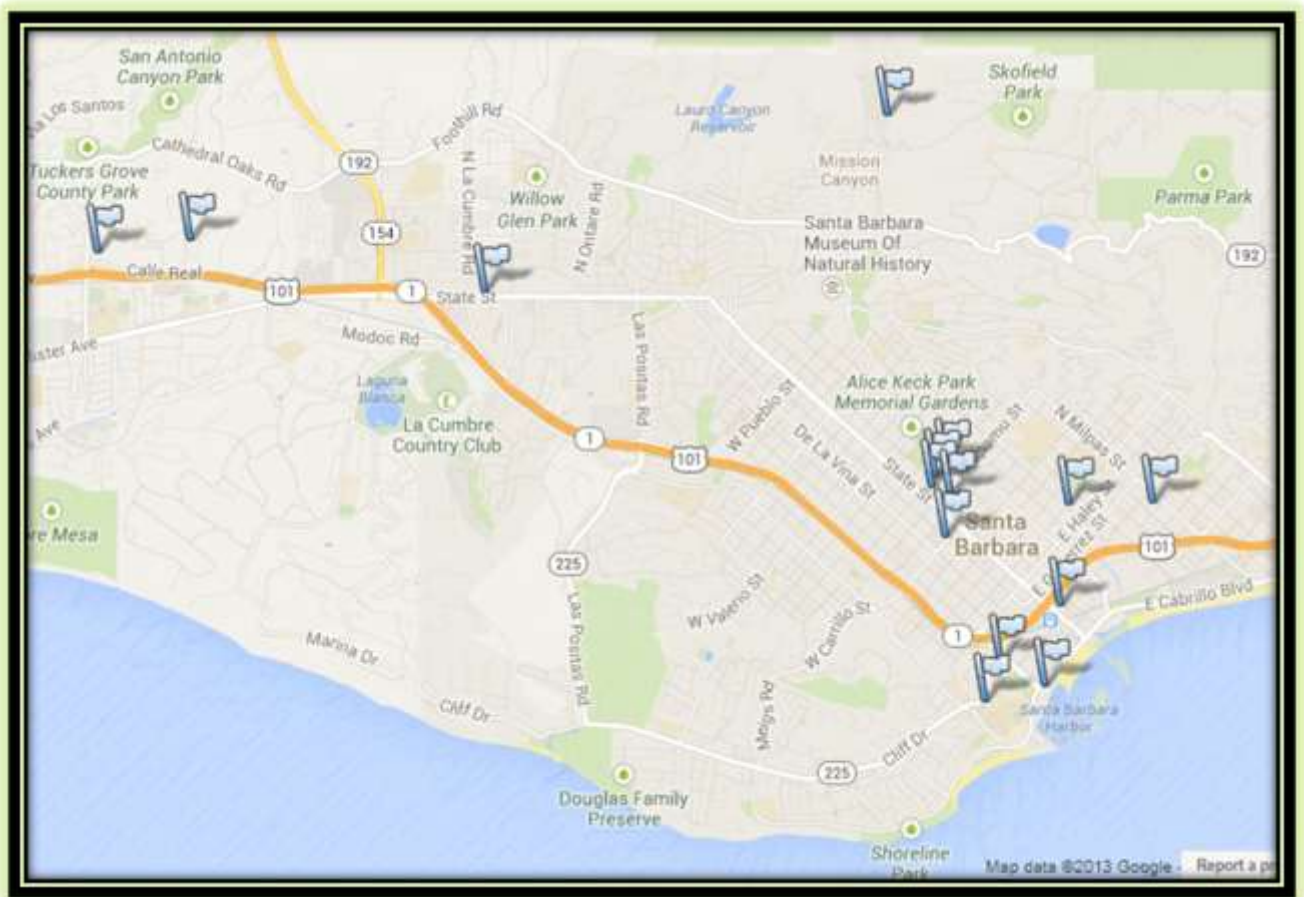
Nissan, 425 S. Kellogg Way, Goleta

UCSB Parking Lot No. 10

UCSB Parking Lot No. 18

UCSB Parking Lot No. 22

## Santa Barbara (Santa Barbara County): Existing Public Level 2 EV Charging



Ramada, 4770 Calle Real,  
Santa Barbara

Santa Barbara County  
Social Services, 260 N. San  
Antonio Road, Santa  
Barbara

Best Western Pepper Tree  
Inn, 3850 State St, Santa  
Barbara

Santa Barbara City  
College, 721 Cliff Drive,  
Santa Barbara

City of Santa Barbara -  
Swim Club, 401 Shoreline  
Drive, Santa Barbara

City of Santa Barbara  
Helena Parking Lot, 217  
Helena Ave, Santa Barbara

Allen Associates, 201 N.  
Milpas St, Santa Barbara

Canary Hotel, 31 W.  
Carrillo St, Santa Barbara

County of Santa Barbara  
Govt Center, 1220 Santa  
Barbara St, Santa Barbara

Brisas Del Mar, 223  
Castillo St, Santa Barbara

Metropolitan Transit  
District, 550 Olive St, Santa  
Barbara

City of Santa Barbara -  
Parking Lot No. 6, 1221  
Anacapa St, Santa Barbara

County of Santa Barbara  
Parking Lot, 1226 Anacapa  
St, Santa Barbara

City of Santa Barbara -  
Parking Lot No. 7, 1115  
Anacapa St, Santa Barbara

Santa Barbara Botanic  
Gardens, 1212 Mission  
Canyon Road, Santa  
Barbara

## City of Carpinteria (Santa Barbara County): Existing Public Level 2 EV Charging



Lookout Beach – Santa Barbara County, 102 Lookout Road, Summerland

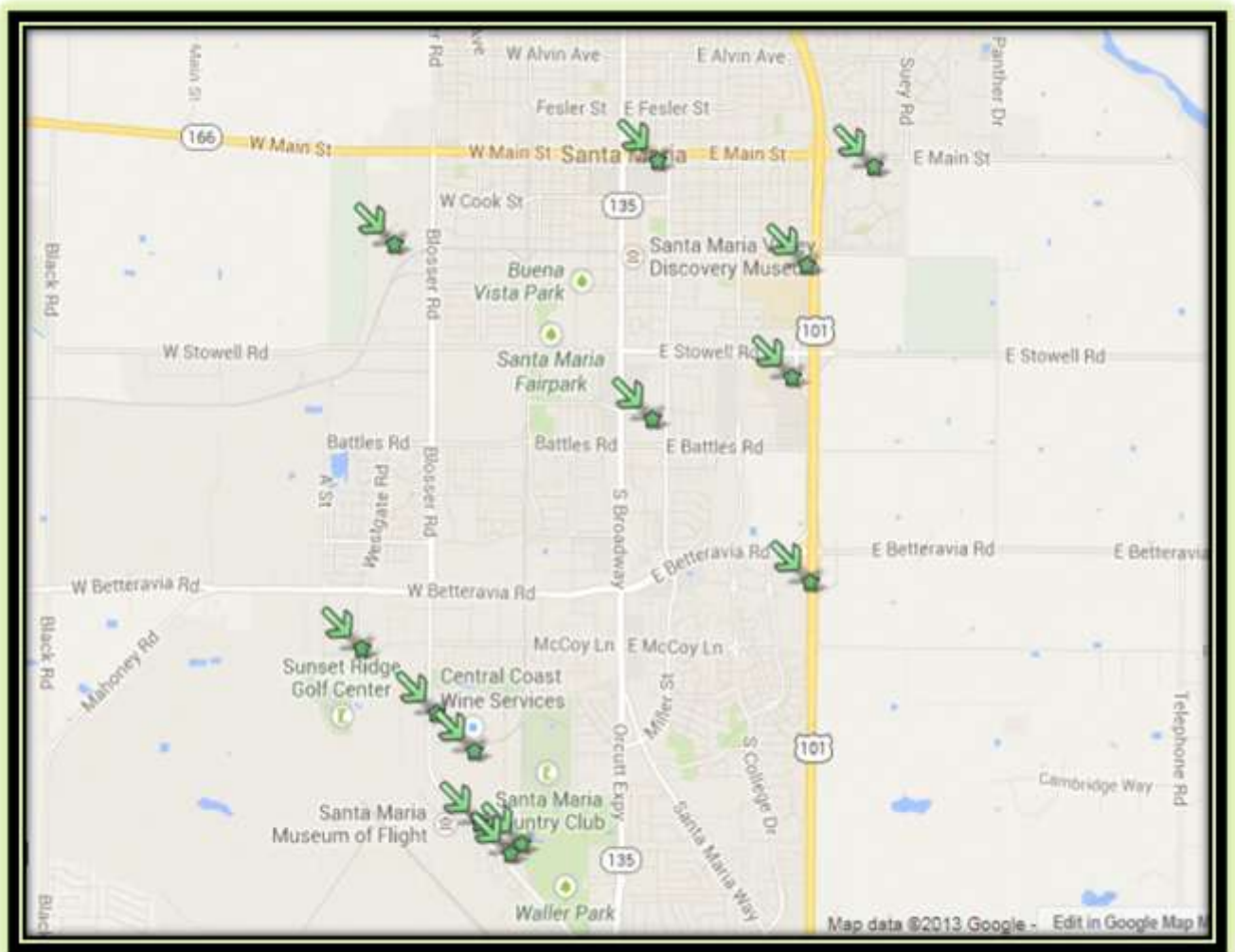
Pacifica Graduate Institute, 249 Lambert Road, Carpinteria (Planned)

Amtrak Station, 499 Linden Avenue, Carpinteria

Rincon Beach, 6728 S. Via Real, Carpinteria



## Santa Maria (Santa Barbara County): Potential Workplace EV Charging



CD Zodiac  
264 Airpark Dr

Costco  
1335 S. Bradley Rd

Den-Mat Holdings  
2727 Skyway DR

Hardy Diagnostics  
1430 W. McCoy Ln

Macy's  
302 Town Center East

Okonite  
2900 Skyway Dr

Pictsweet  
732 Hanson Way

Santa Maria Airport  
3249 Terminal Dr

Santa Maria Times  
3200 Skyway DR

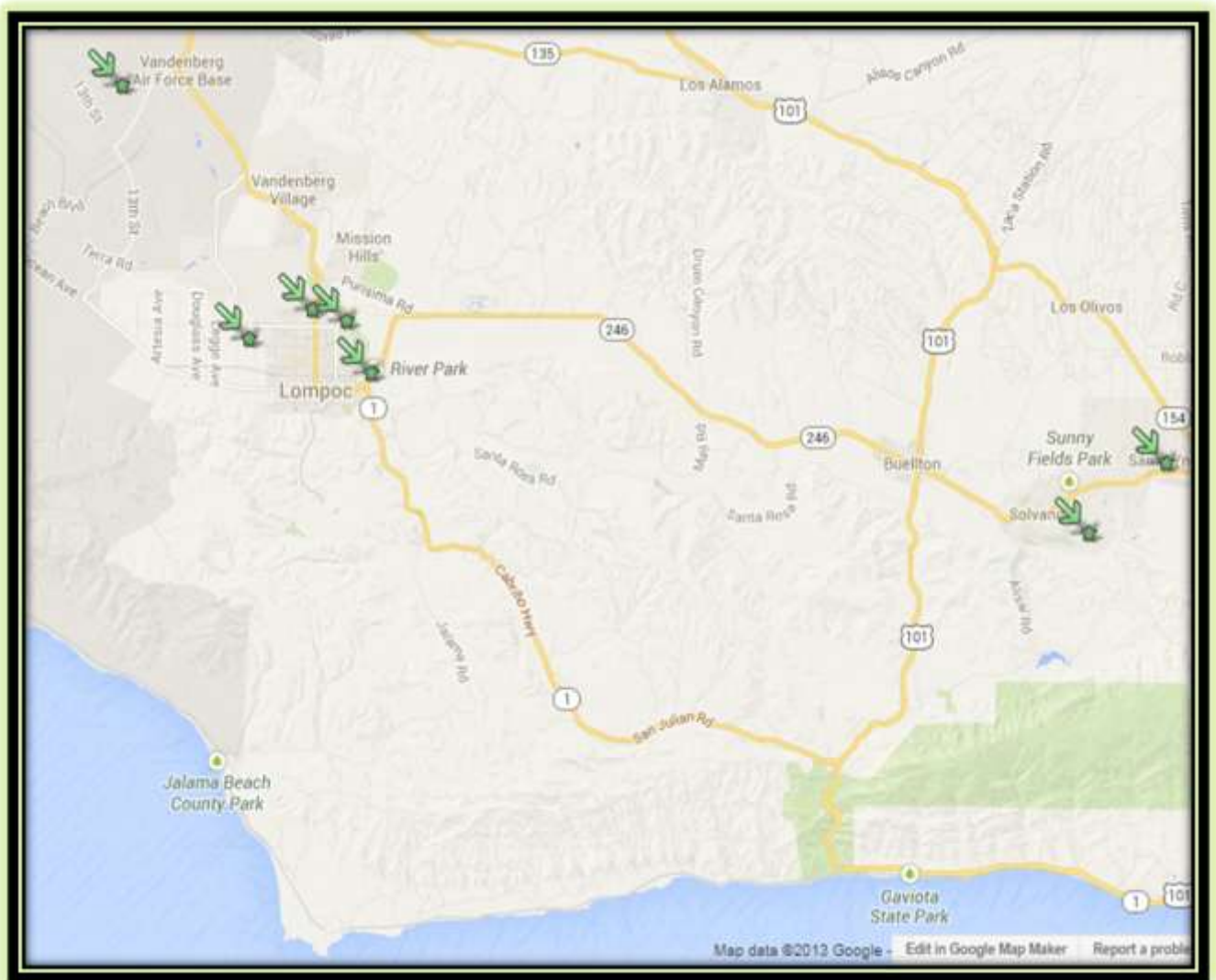
US Post Office  
201 E. Battles Rd

Walmart  
2220 S. Bradley Ave

Allan Hancock College  
800 S. College Drive

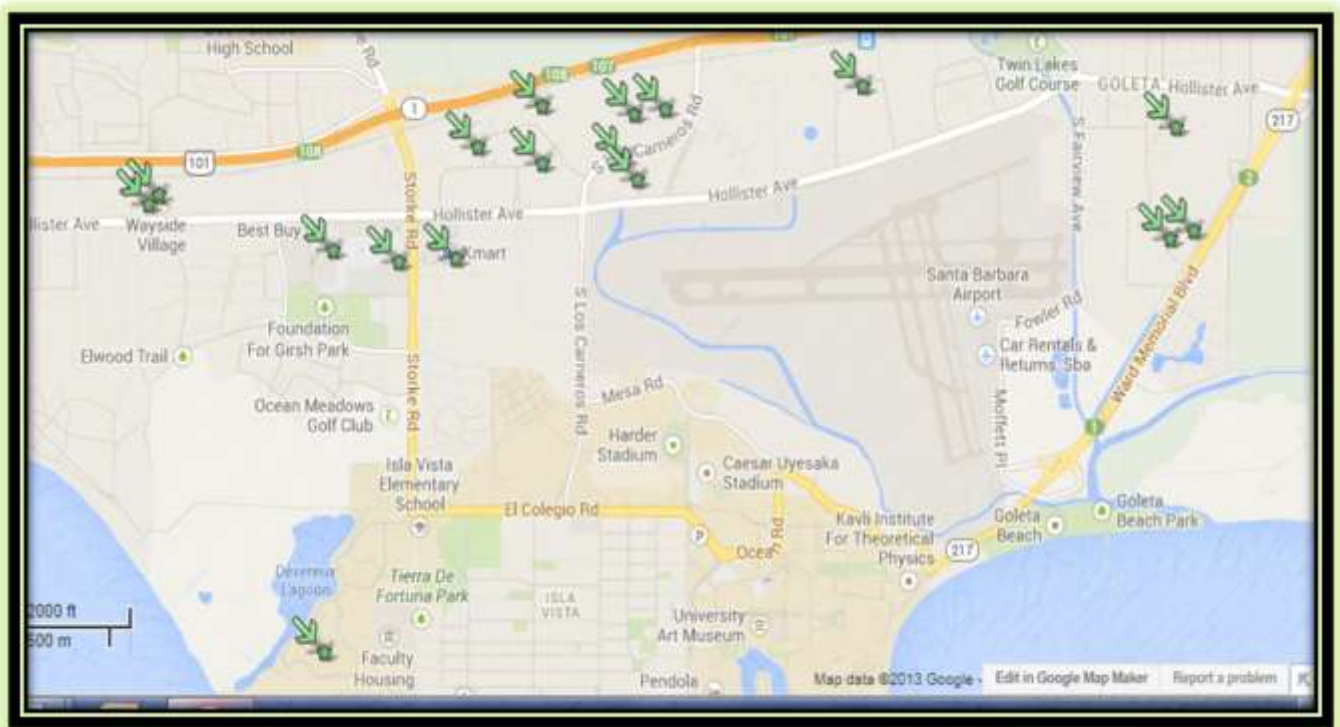
Marian Regional Med  
Center  
1400 E. Church Street

## Cities of Lompoc, Solvang, and Santa Ynez (Santa Barbara County): Potential Workplace EV Charging



Big E Produce 901 Floradale Ave Lompoc  
 Lompoc Unified School District 1301 N. A Street Lompoc  
 Lompoc Valley Med Center 1515 E. Ocean Ave Lompoc  
 Walmart 701 W. Central Ave Lompoc  
 Chumash Casino 3400 E. Highway 246 Santa Ynez  
 River Course Golf Club 150 Alisal Road Solvang  
 Vandenberg AFB 747 Nebraska Ave Vandendbury AFB

## Goleta (Santa Barbara County): Potential Workplace EV Charging



Advanced Vision Science  
5743 Thornwood DR  
Goleta

Devereux Foundation  
2727 Seaway Dr  
Goleta

Medtronics  
125 Cremona Dr  
Goleta

Allergan  
71 S. Los Carneros Rd  
Goleta

FLIR Commercial Systems  
70 Castilian Dr  
Goleta

Moss Motors  
440 Rutherford St  
Goleta

Brown & Brown Insurance  
1 S. Los Carneros RD  
Goleta

Home Depot  
6975 Market Place Dr  
Goleta

Raytheon  
7418 Hollister Ave  
Goleta

Bruker Nano  
112 Robin Hill  
Goleta

Inogen  
326 Bollay Dr  
Goleta

Renco Encoders  
26 Coromar Dr  
Goleta

CONMED  
7416 Hollister Ave  
Goleta

Intriple Tech  
751 S. Kellogg Ave  
Goleta

Toyon Research  
6800 Cortona Dr  
Goleta

Costco  
7095 Market Place DR  
Goleta

Karl Stortz Imaging  
175 Cremona Dr  
Goleta

## Santa Barbara (Santa Barbara County): Potential Workplace EV Charging



4 Seasons  
1260 Channel Dr  
Santa Barbara

BMW  
402 S. Hope Ave  
Santa Barbara

Channel Industries  
879 Ward Dr  
Santa Barbara

Commission Junction  
530 E. Montecito St  
Santa Barbara

Cottage Hospital  
400 W. Pueblo St  
Santa Barbara

Doubletree Fess Parker  
Resort  
633 E. Cabrillo Blvd  
Santa Barbara

Green Hills Software  
30 W. Sola ST.  
Santa Barbara

Make it Work  
1187 Coast Village  
Road Santa Barbara

Marborg Industries  
728 E. Yanonali St  
Santa Barbara

Montecito FM Inc  
302 W. Carrillo St  
Santa Barbara

Sansum Medical Center  
317 W. Pueblo ST  
Santa Barbara

Santa Barbara Public  
Works  
630 Garden St  
Santa Barbara

Santa Barbara City College  
721 Cliff Dr.  
Santa Barbara

SB City Hall  
735 Anacapa St  
Santa Barbara

SB County Coroner  
4434 Calle Real  
Santa Barbara

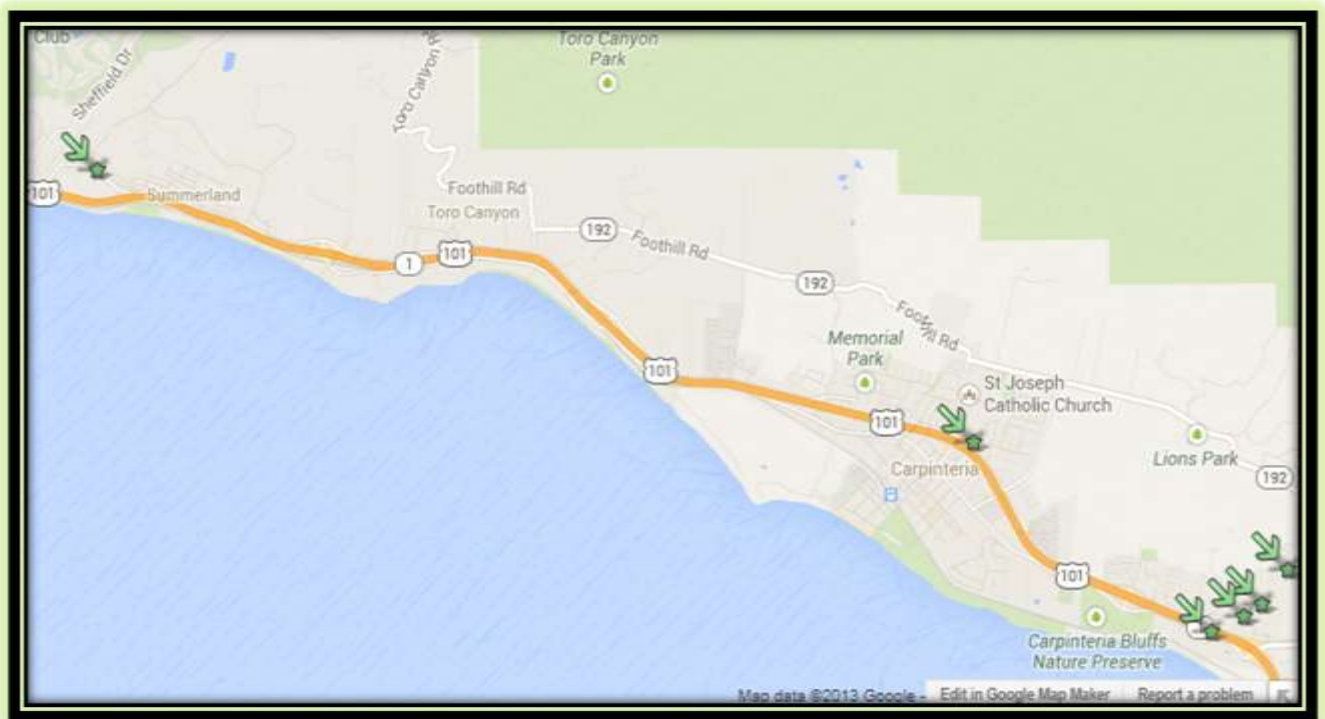
SB County Education  
4400 Cathedral Oaks Rd  
Santa Barbara

SB County Public Works  
123 E. Anapamu St  
Santa Barbara

UCSB  
552 University Rd  
Santa Barbara

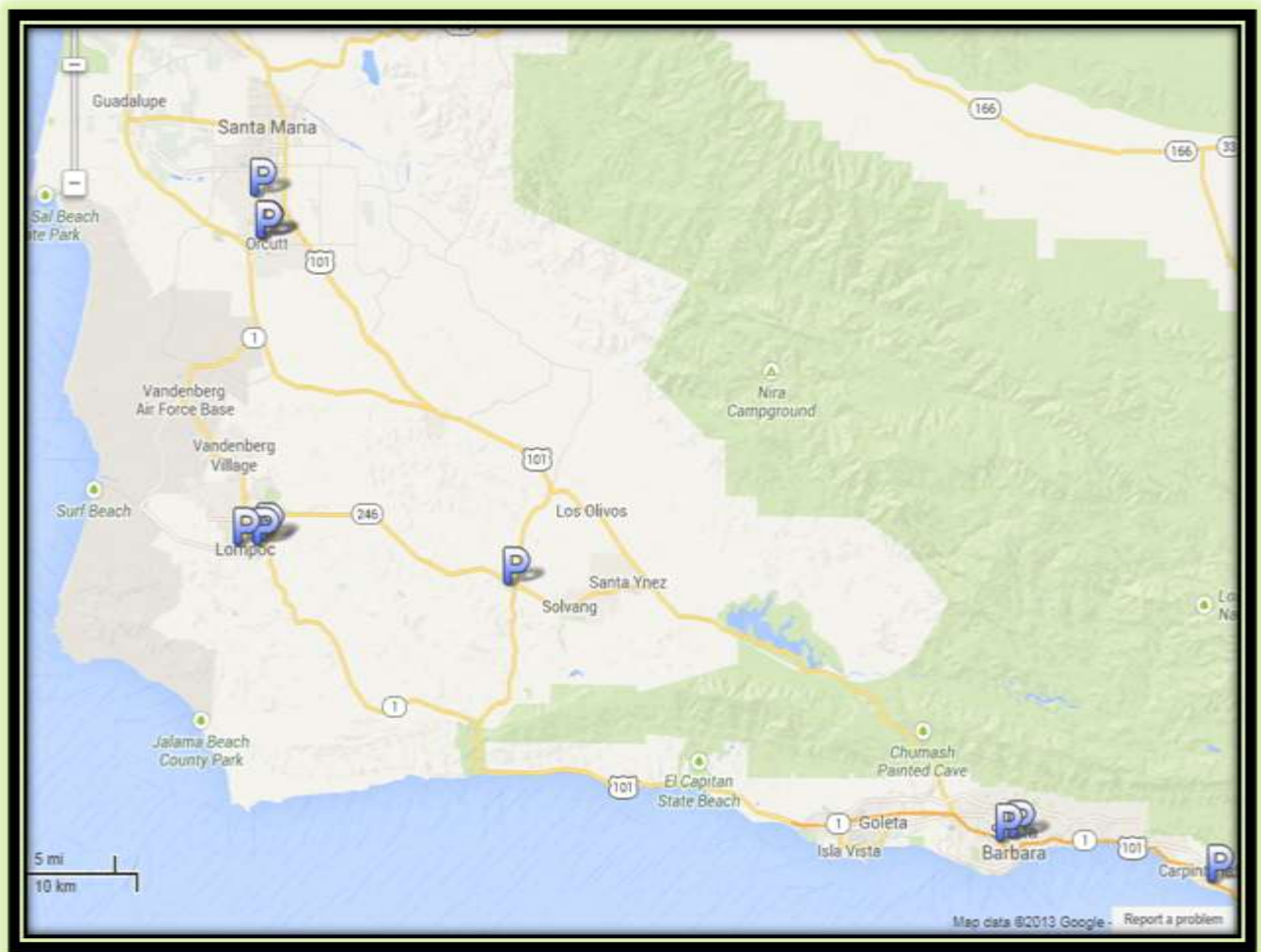


## City of Carpinteria and Summerland (Santa Barbara County): Potential Workplace EV Charging



QAD 100 Innovator Pl Summerland  
Helix Medical 1110 Mark Ave Carpinteria  
Associate Group Insurance 1155 Eugenia Pl Carpinteria  
Clipper Wind Power 6305 Carpinteria Ave Carpinteria  
Dako 6392 Via Real Carpinteria  
Nusil Tech 1050 Cindy Lane Carpinteria

## Santa Barbara County Park N Ride Lots: Potential EV Charging



Clean Air Express Station, 3455 Skyway Dr, Santa Maria

Park N Ride Lot, Clark Ave at Hwy 135, Orcutt

Clean Air Express Station, W. Cypress Ave, Lompoc

Ocean Lanes Park N Ride, 1420 E. Ocean Ave, Lompoc

Home Depot, 1701 E. Ocean Ave, Lompoc

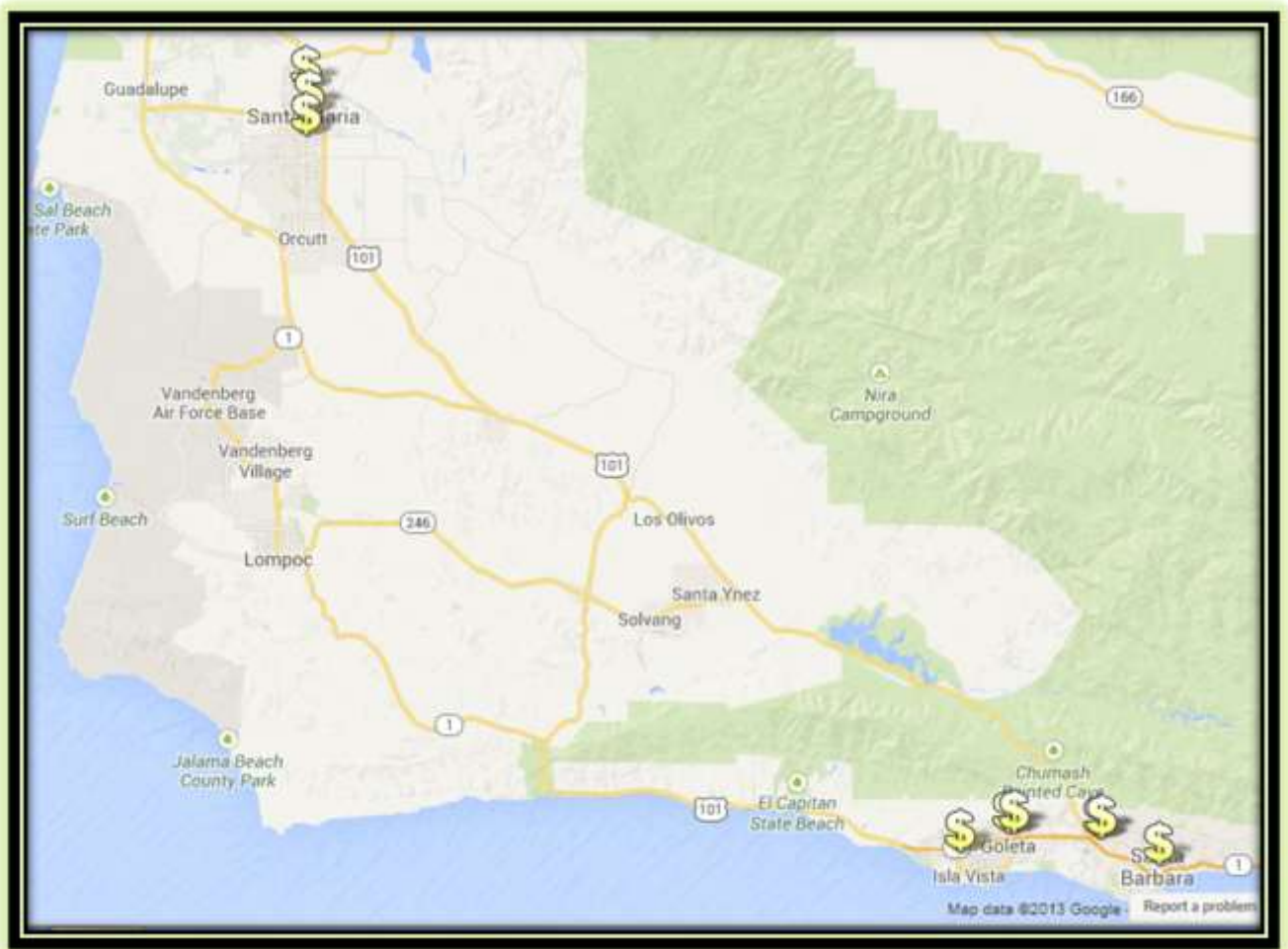
Avenue of the Flags (south), Buellton

Carrillo Lot, Carrillo and Castillo Sts, Santa Barbara

Cota Lot, Cota and Santa Barbara Sts, Santa Barbara

Bailard Park N Ride Lot, Bailard Ave, Carpinteria

## Santa Barbara County Shopping Centers: Potential Public Level 2 EV Charging



Santa Maria Town Center, 371 Town Center Circle, Santa Maria

Santa Maria Broadway Plaza, 1405 S. Broadway, Santa Maria

Pepper Tree Plaza, 1621 N. Broadway, Santa Maria

Camino Real Marketplace, 7004 Marketplace Drive, Goleta

Fairview Shopping Center, 173 N. Fairview Avenue, Goleta

Calle Real Shopping Center, 5660 Calle Real, Goleta

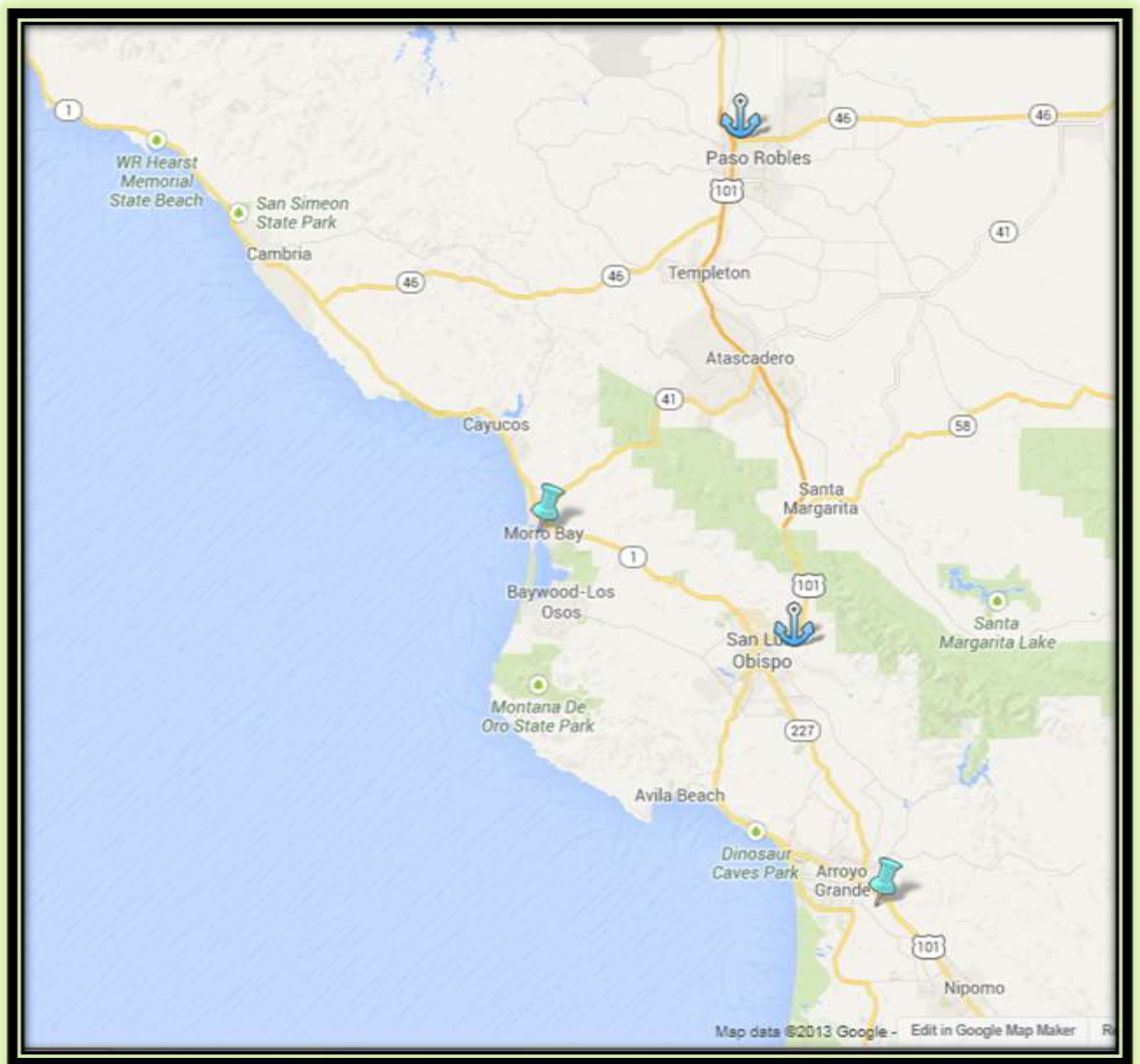
Five Points Shopping Center, 3957 State Street, Santa Barbara

Paseo Nuevo Shopping Mall, 651 Paseo Nuevo, Santa Barbara

La Cumbre Plaza, 121 S. Hope Avenue, Santa Barbara

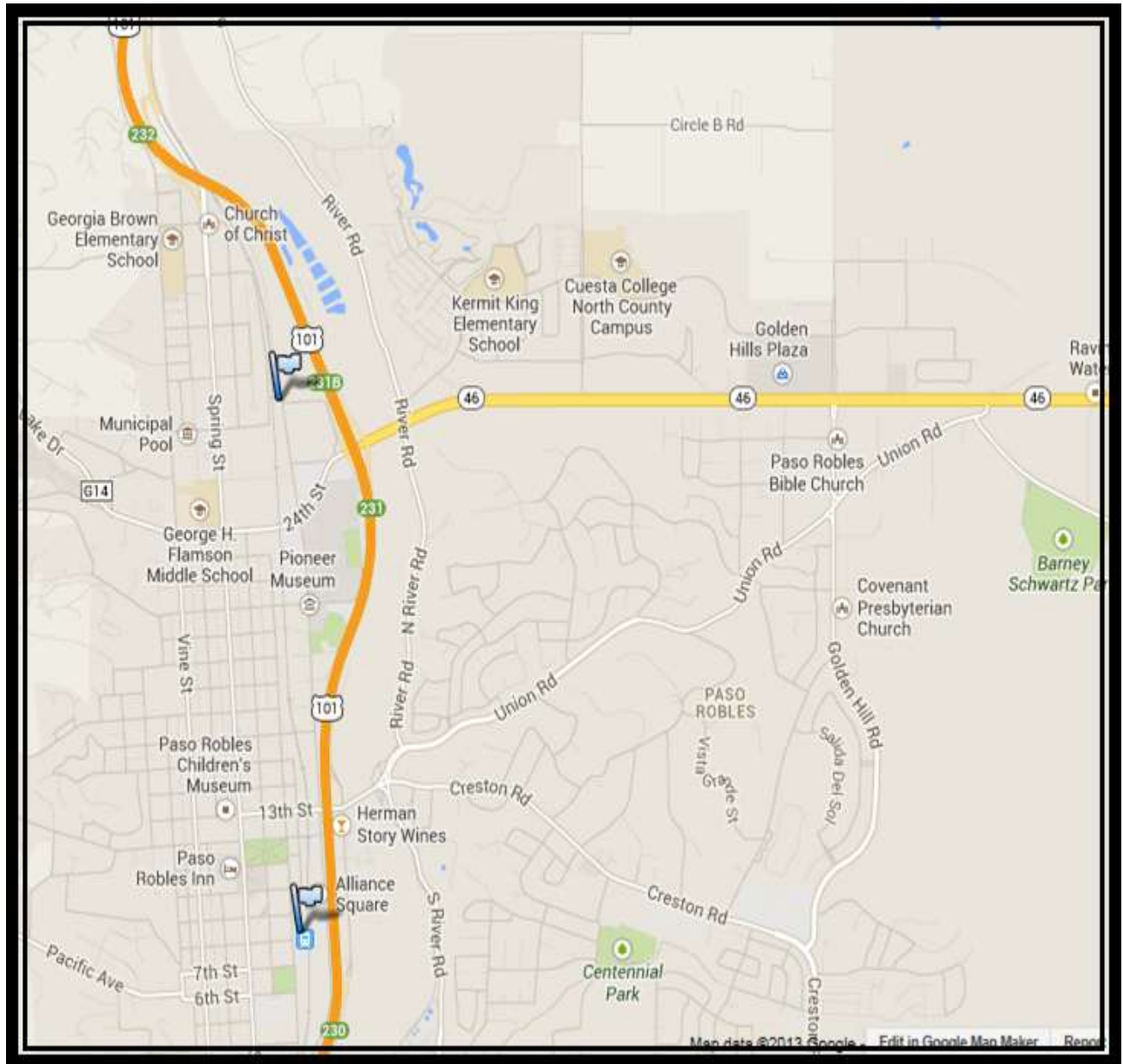
## San Luis Obispo County DC Fast Charger Priority Sites

First Tier (Anchors) and Second Tier (Push Pins)





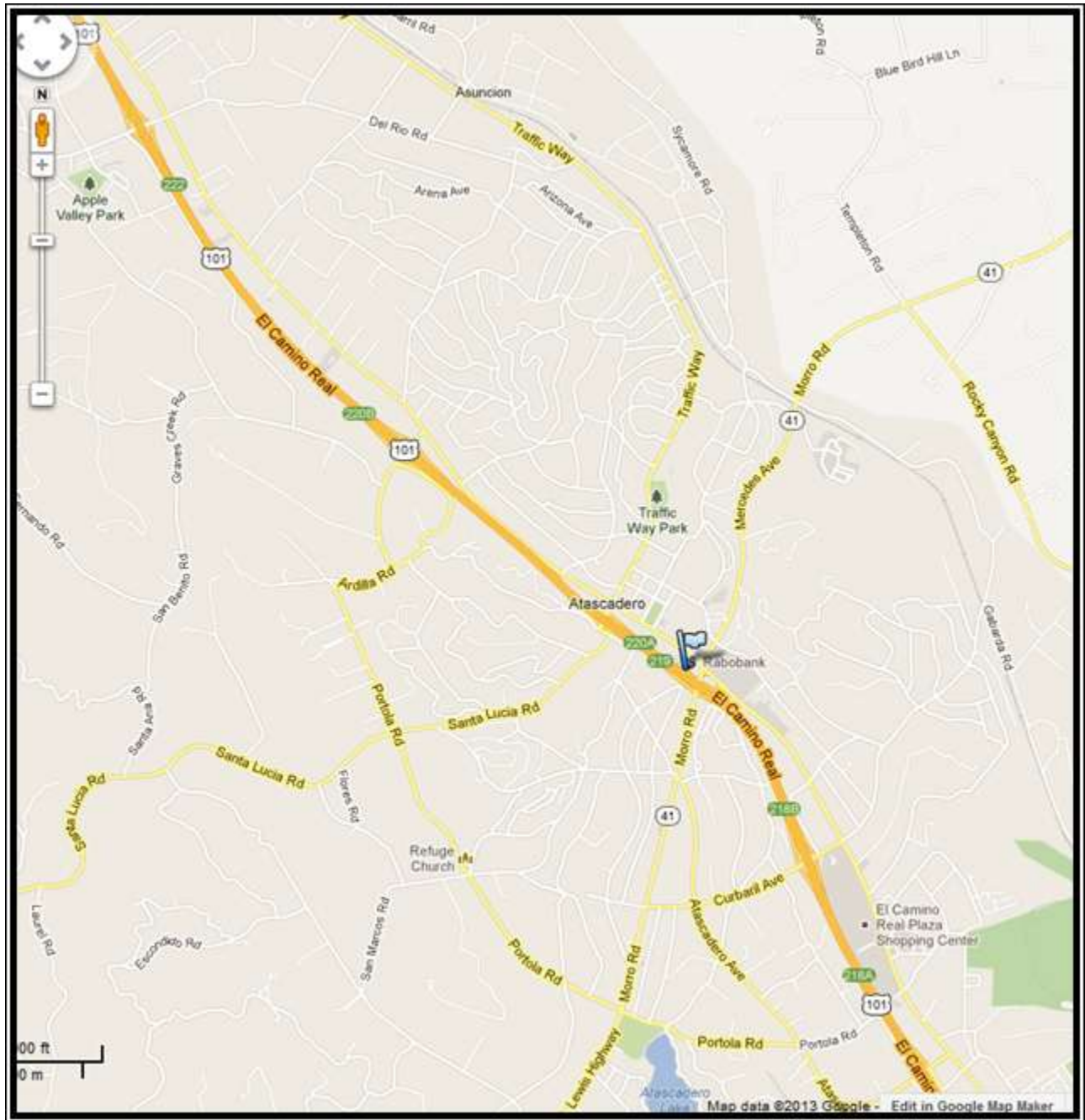
## City of Paso Robles (San Luis Obispo County): Existing and Planned Public Level 2 EV Charging



The Oaks Hotel, 3000 Riverside Avenue, Paso Robles

Train Station, 800 Pine Street, Paso Robles (planned)

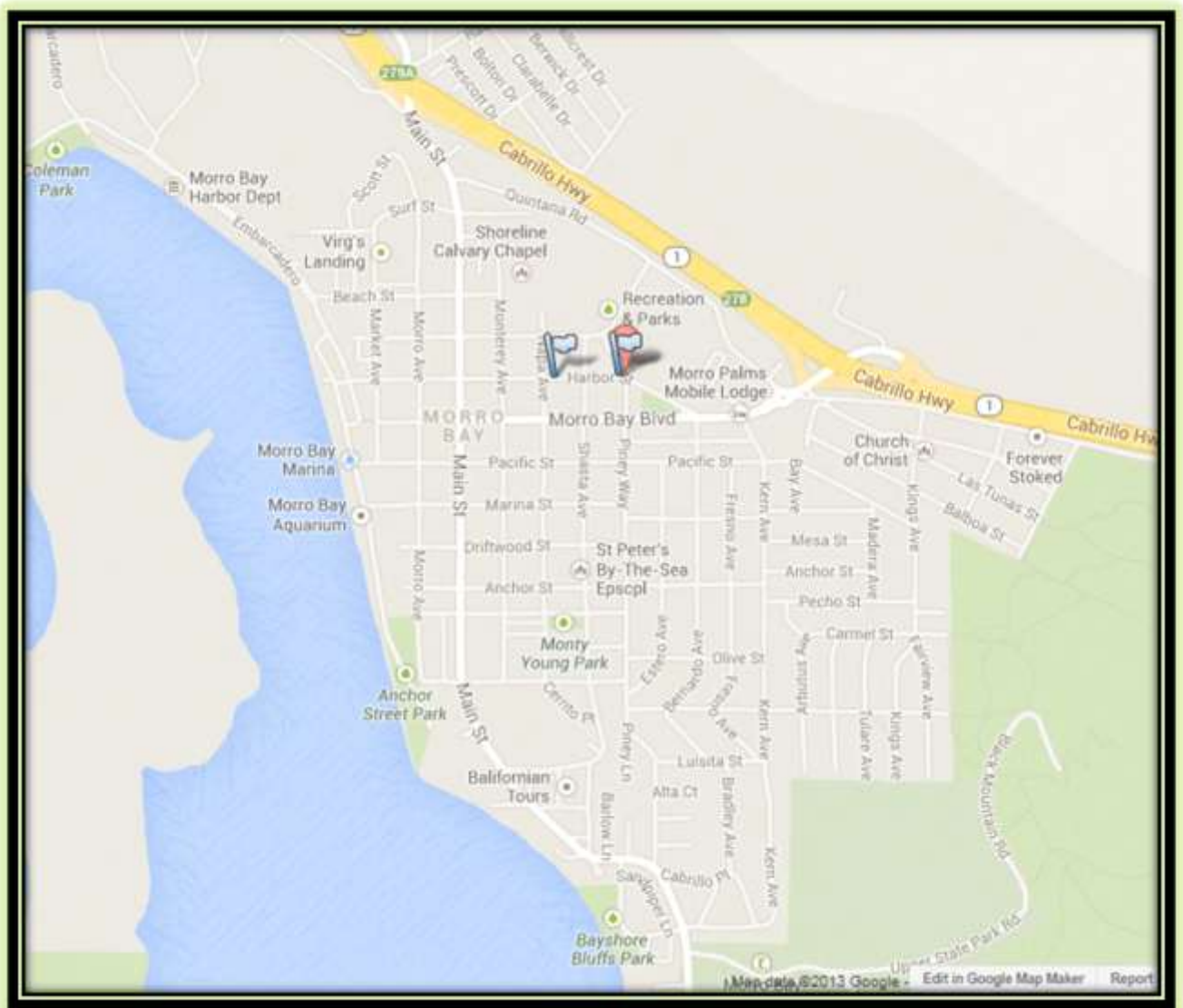
## City of Atascadero (San Luis Obispo County): Public Level 2 EV Charging



Rabobank, 6950 El Camino Real, Atascadero, CA



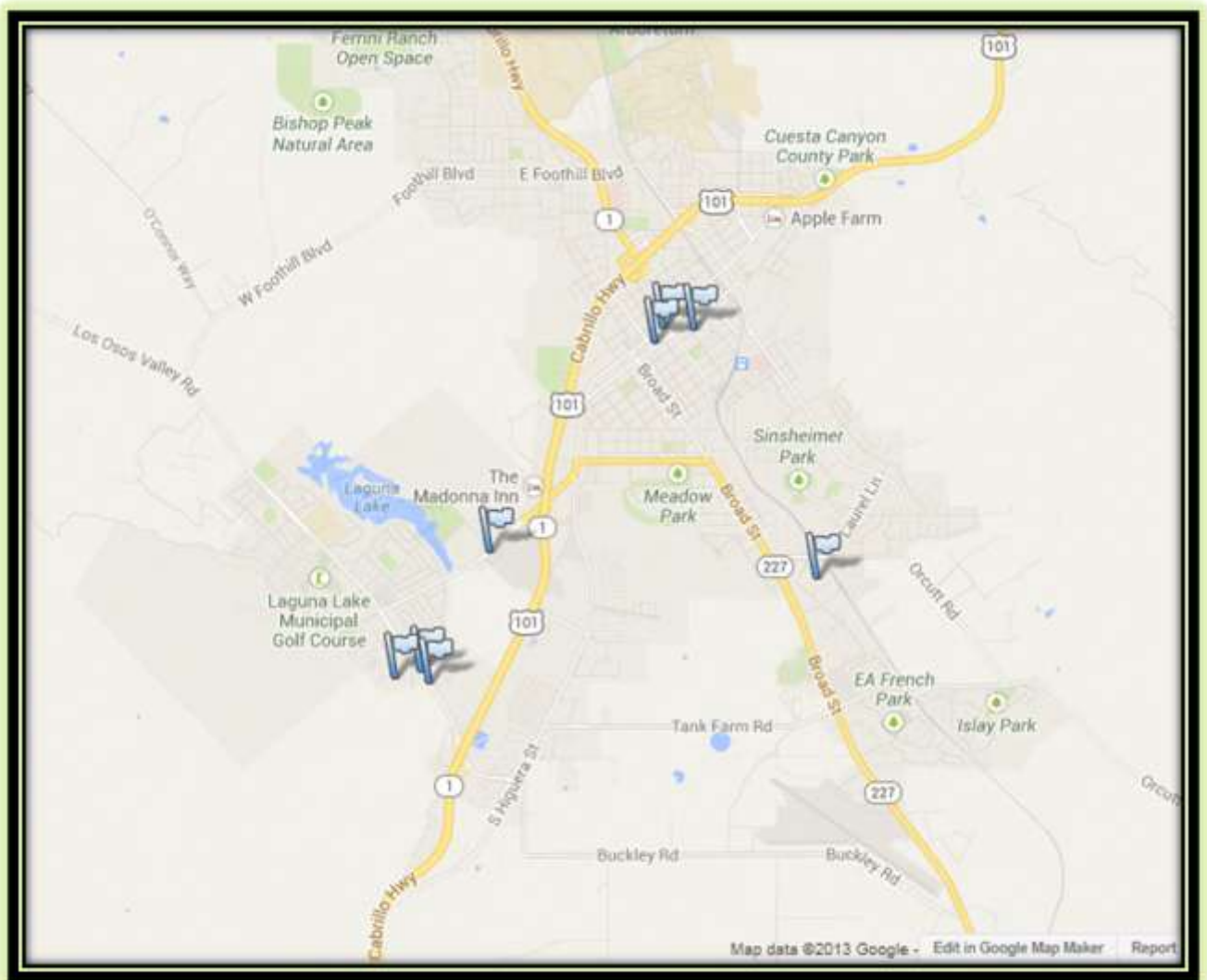
## City of Morro Bay (San Luis Obispo County): Existing Public Level 2 EV Charging



Morro Bay Transit, 535 Harbor Street, Morro Bay

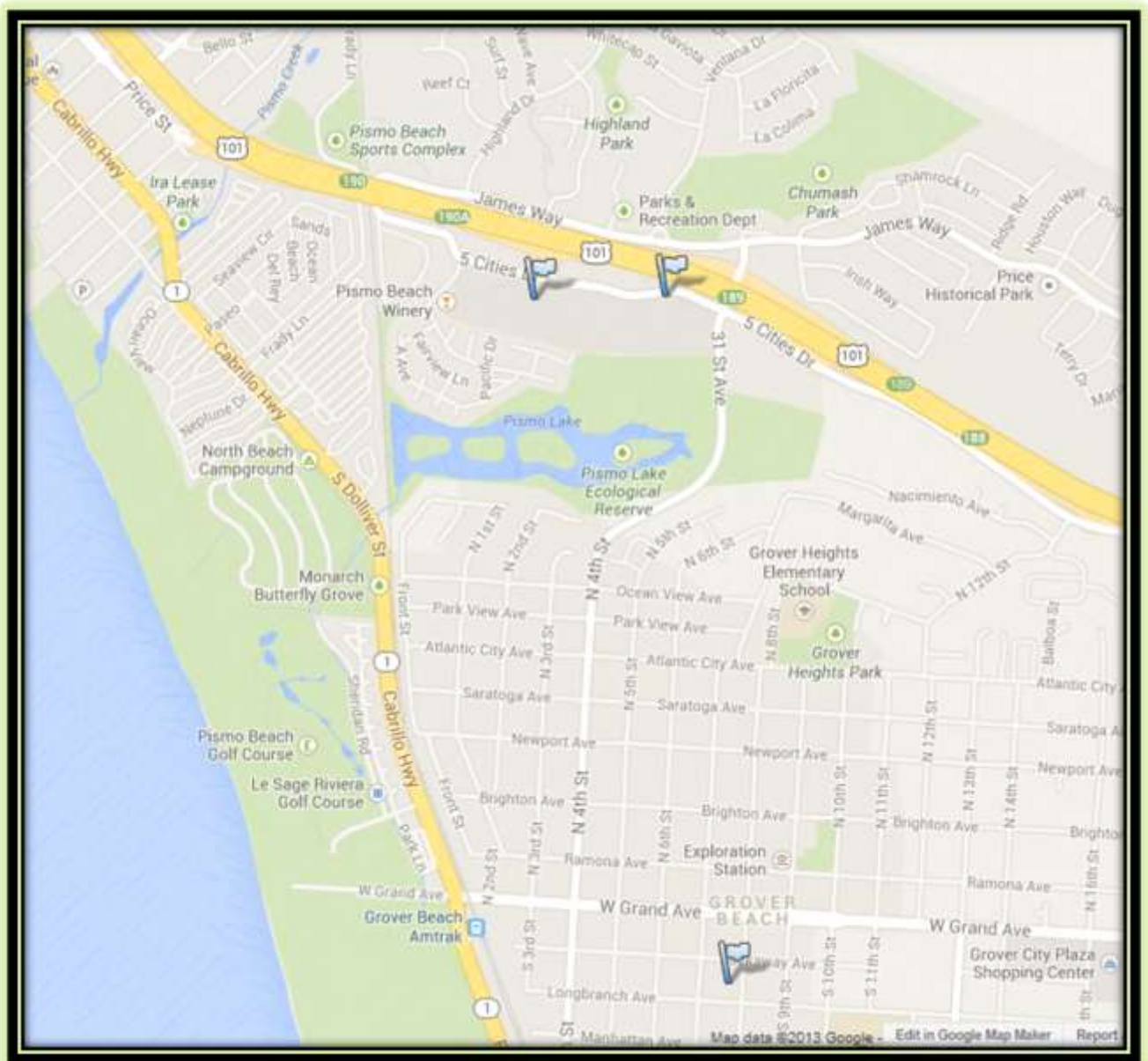
Chamber of Commerce, 695 Harbor Street, Morro Bay

## San Luis Obispo (San Luis Obispo County): Existing Public Level 2 EV Charging



- Coast Nissan, 12150 Los Osos Valley Road, San Luis Obispo
- Home Depot, 12121 Los Osos Valley Road, San Luis Obispo
- Target Shopping Center, 12076 Los Osos Valley Road, San Luis Obispo
- The Promenade, 319 Madonna Road, San Luis Obispo
- Marsh Street Parking Garage, 881 Marsh St, San Luis Obispo
- 1st Bank of San Luis Obispo, 995 Higuera St, San Luis Obispo
- Marcum Copp Barbieri DDS, 1129 Pacific St, San Luis Obispo
- San Luis Obispo County APCD, 3433 Roberto Court, San Luis Obispo

## Cities of Pismo Beach and Grover Beach (San Luis Obispo County): Existing Public Level 2 EV Charging

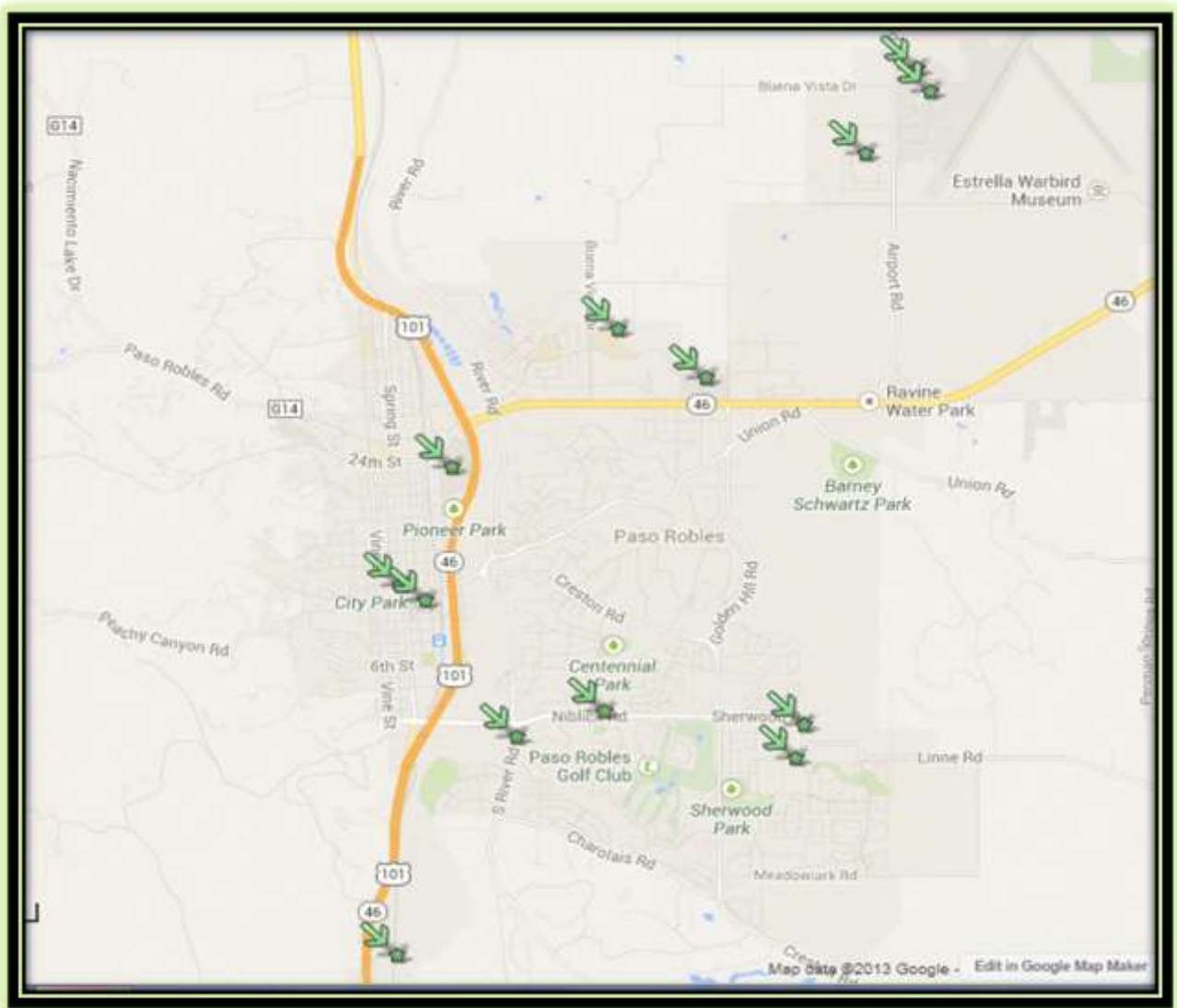


Rancho Market (Pacific Coast Plaza), 555 Five Cities Drive, Pismo Beach

Pismo Beach Premium Outlets, 333 Five Cities Drive, Pismo Beach

Grover Beach City Hall, 154 South 8th Street, Grover Beach

## Paso Robles (San Luis Obispo County): Potential Workplace EV Charging



Applied Technologies  
3025 Buena Vista Dr

Calif Mid State  
Fairgrounds  
2198 Riverside Ave

City of Paso Robles  
1000 Spring St

Cuesta College  
2800 Buena Vista Dr

Heritage Oaks Bancorp  
1222 Vine ST

IQMS  
2131 Wisteria Road

Jit Co  
1610 Commerce Way

Juvenile Justice  
4545 Airport Rd

Lowe's  
2445 Golden Hill Rd

Paris Precision  
1650 Ramada Dr

Paso Robles Airport  
4900 Wing Way

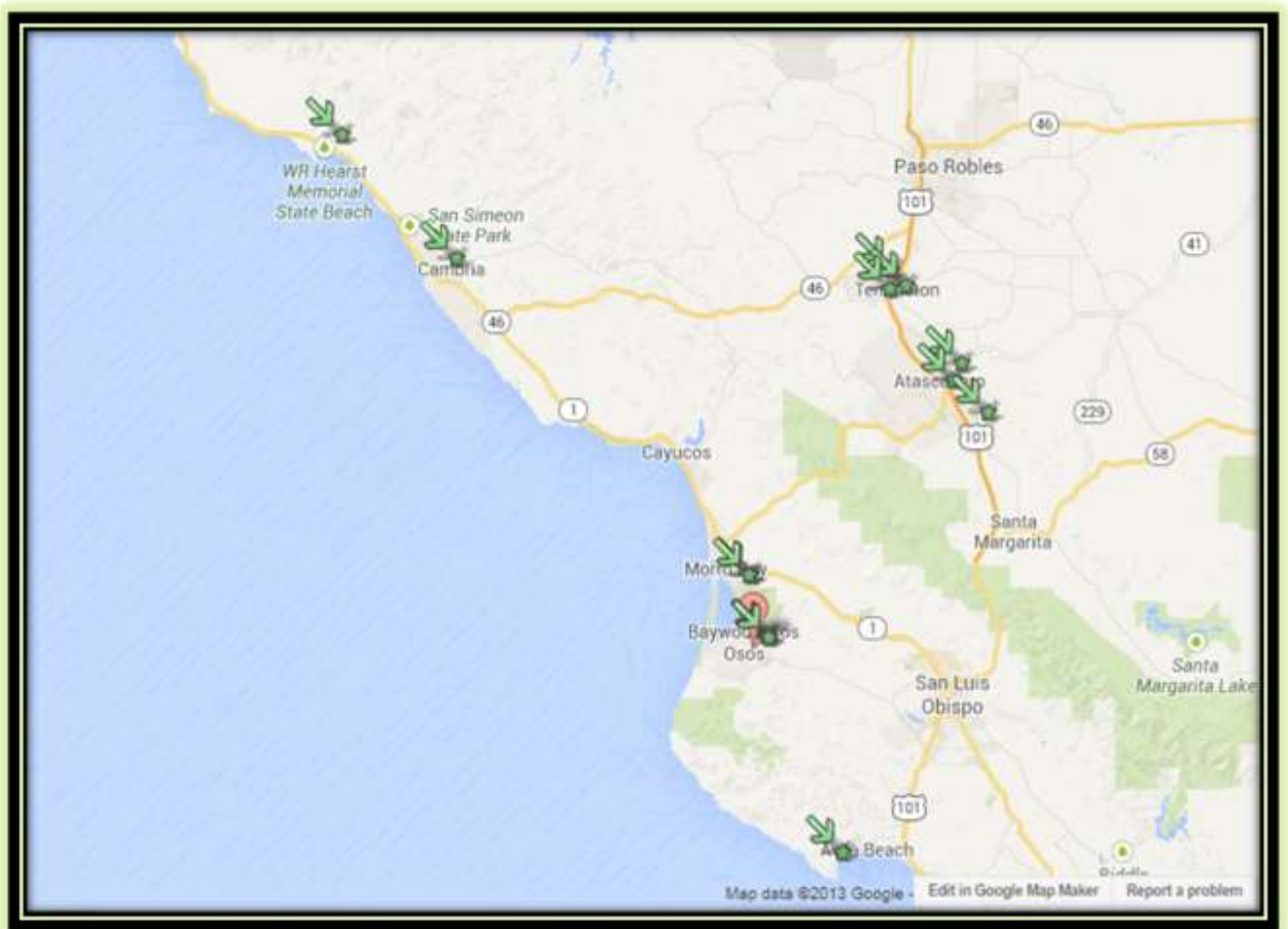
Paso Robles School District  
800 Niblick Road

Walmart  
180 N. Niblick Rd

Zurn Wilkins  
1747 Commerce Way



## North San Luis Obispo County: Potential Workplace EV Charging



Atascadero High School  
1 High School Hill Rd  
Atascadero

Atascadero State Hospital  
10333 El Camino Real  
Atascadero

Atascadero School District  
5601 W Mall  
Atascadero

PGE  
Diablo Canyon  
Avila Beach

Coast Unified School  
District

1350 Main St.  
Cambria

Ralphs  
1240 Los Osos Valley Rd  
Los Osos

Rantec Power Systems  
1173 Los Olivos Ave  
Los Osos

Inn at Morro Bay  
60 State Park Road  
Morro Bay

Morro Bay Golf Course  
201 State Park Rd  
Morro Bay

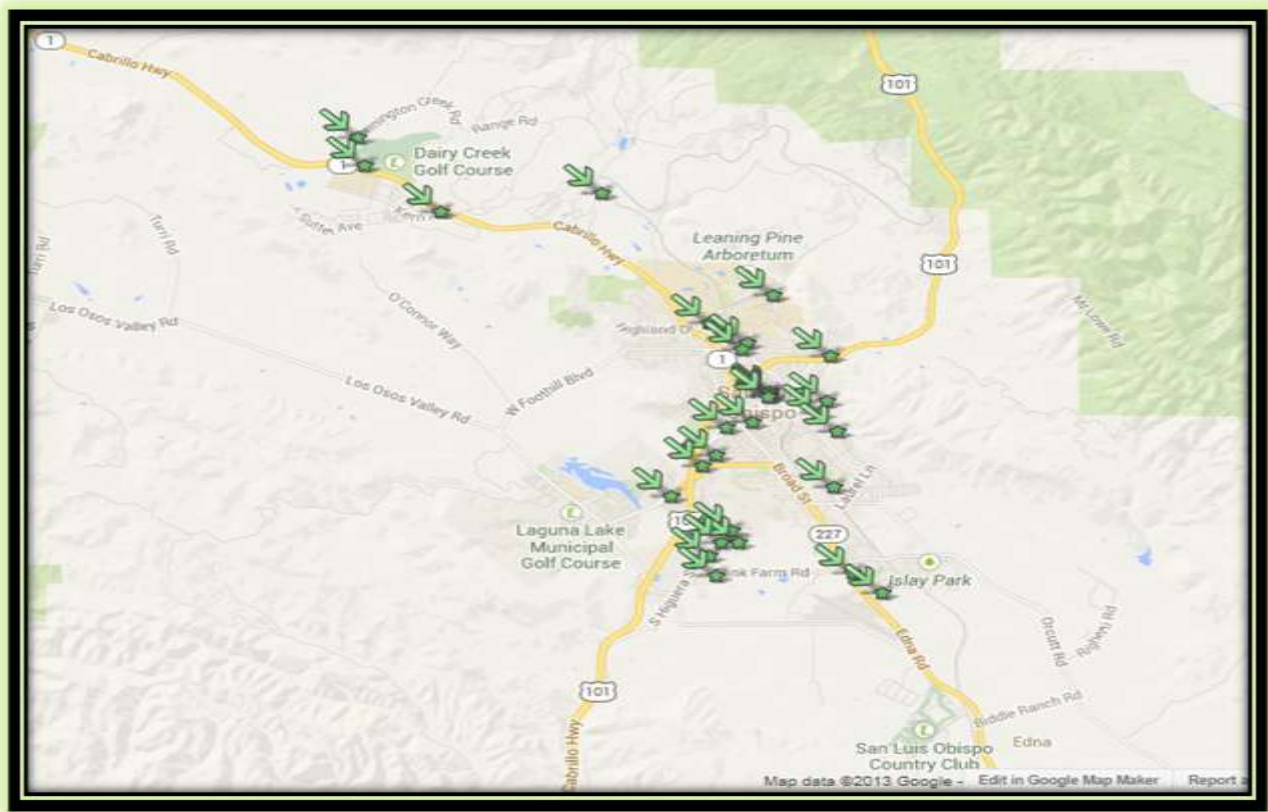
Hearst Castle  
750 Hearst Castle Rd  
San Simeon

Twin Cities Hospital  
1100 Las Tablas Rd  
Templeton

Mental Marketing  
1080 Tishlini Lane  
Templeton

Templeton School District  
960 Old Country Road  
Templeton

## City of San Luis Obispo: Potential Workplace EV Charging



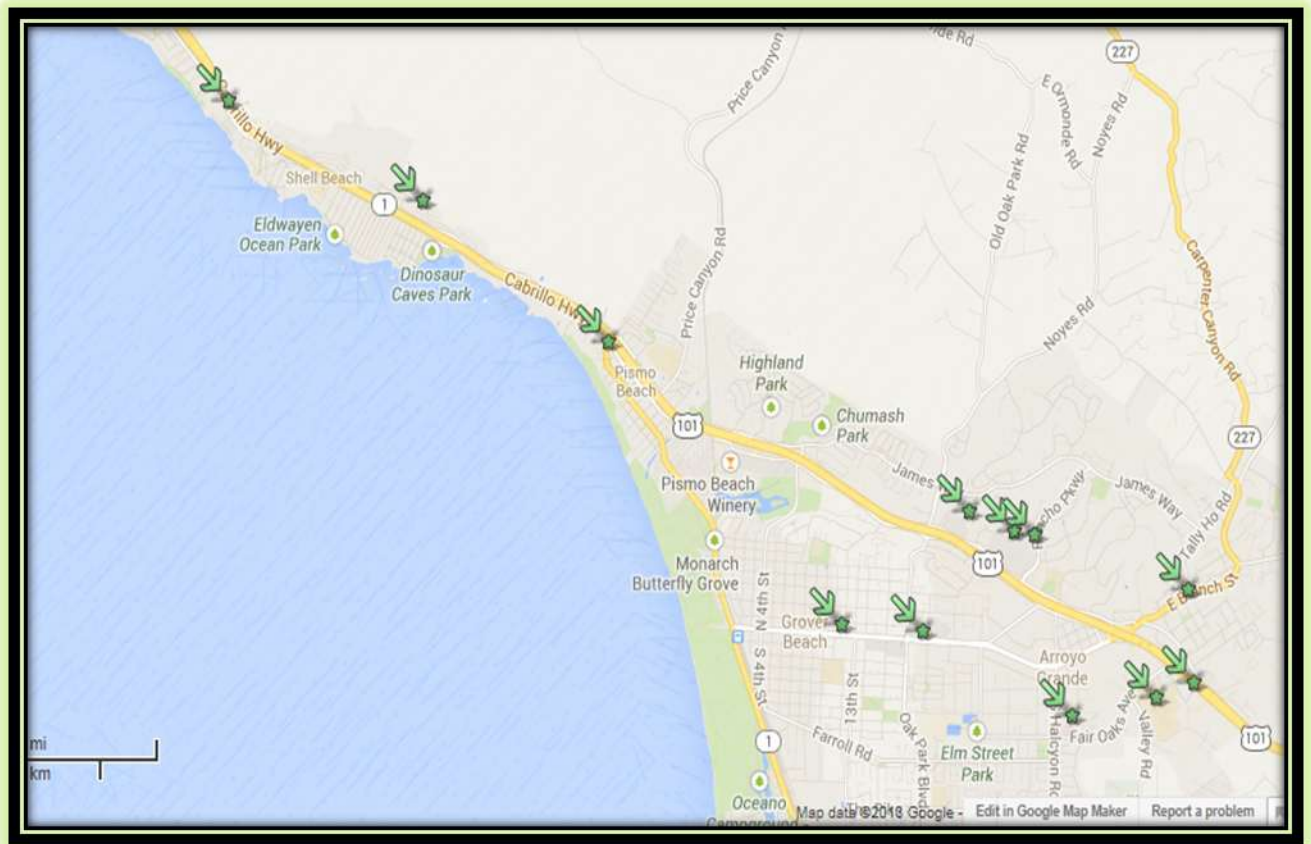
Apple Farms Resort  
 2015 Monterey  
 French Hospital  
 1911 Johnson Ave  
 Cal Poly SLO  
 Grand Dr/Highland  
 Madonna Inn Resort  
 100 Madonna Rd  
 Calif Dept of Forestry  
 635 N. Santa Rosa  
 Pacific Gas & Electric  
 406 Higuera St.  
 California Mens Colony  
 Highway 1  
 Sierra Vista Med Center  
 1010 Murray Ave  
 Caltrans  
 50 Higuera St

San Luis Coastal USD  
 1500 Lizzie St.  
 Carlson Diagnostic Center  
 79 Casa St SLO  
 County Education  
 3350 Education Dr.  
 CDM Technologies  
 2975 McMillan Ave  
 SLO District Attorney  
 1035 Palm St  
 Central Coast Pathology  
 3701 S. Higuera Dr  
 SLO Parks and Recreation  
 1341 Nipomo St  
 County Govt Center  
 1055 Monterey St SLO  
 Sheriff's Dept  
 1585 Kansas Ave

County Health  
 2191 Johnson Ave SLO  
 Regional Airport  
 4900 Wing Way  
 County Social Services  
 3433 S. Higuera St  
 Steno-Wolf Associates  
 253 Granada Dr  
 County Superior Court  
 1050 Monterey St  
 Symantec 708 Fiero  
 Lane  
 County of SLO 976  
 Osos St Tribune  
 3825 S. Higuera S  
 Cuesta College  
 Highway 1US Postal  
 Service 1655 Dalido Dr  
 Ernie Ball 151  
 Suburban Rd

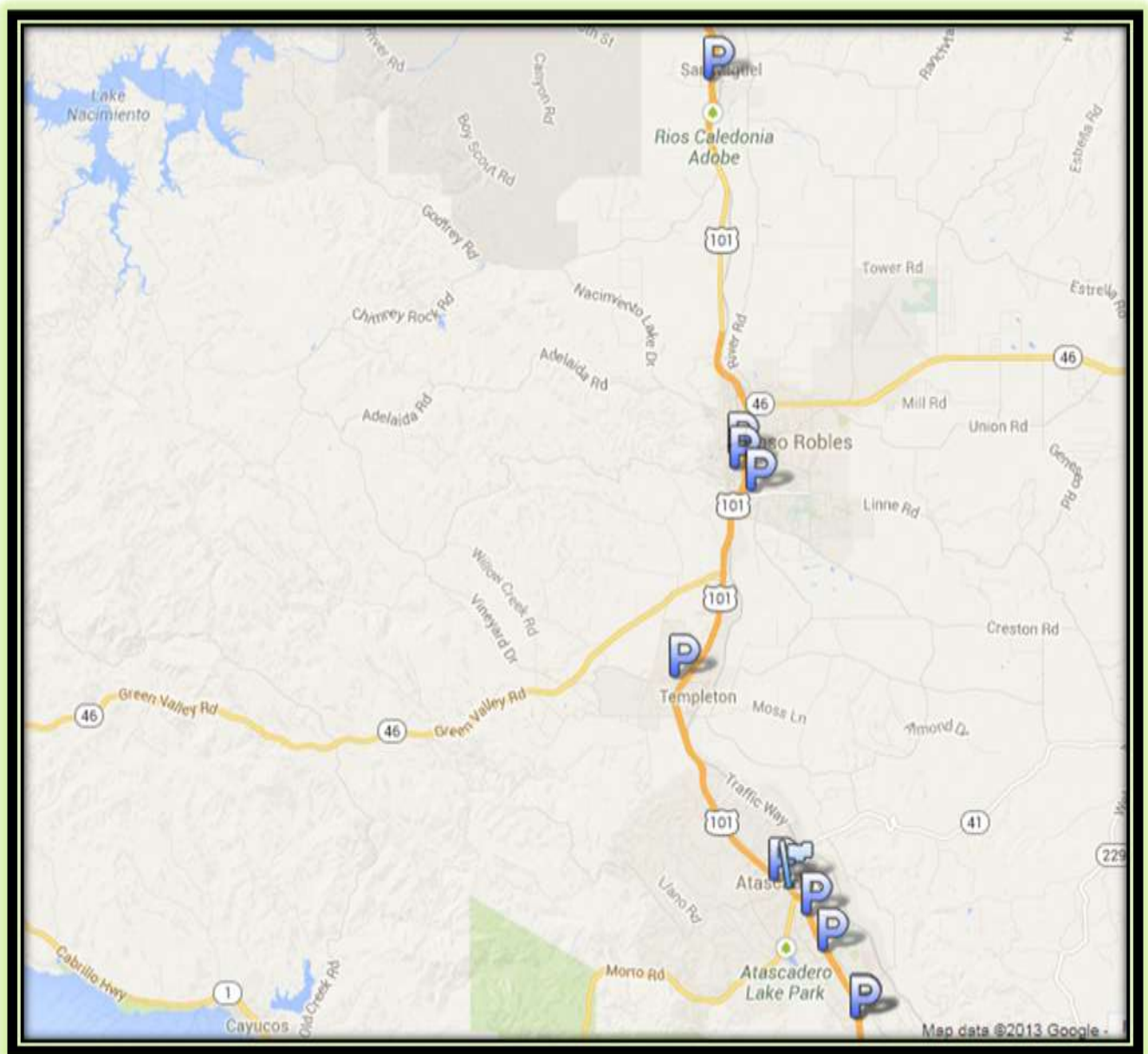


## South San Luis Obispo County: Potential Workplace EV Charging



Albertsons	1132 W. Brand St.	Arroyo Grande
Arroyo Grande High School	495 Valley Rd	Arroyo Grande
Lucia Mar School District	602 Orchard Ave,	Arroyo Grande
Arroyo Grande Hospital	345 S. Halycon Rd	Arroyo Grande
City of Arroyo Grande	300 E. Branch office	Arroyo Grande
Five Cities Shopping Center	1168 W. Brand St	Arroyo Grande
Oak Park Plaza	1570 West Branch	Arroyo Grande
Ace Hardware	1056 W. Grand Ave	Grover Beach
Vons	1758 W. Grand Ave	Grover Beach
Cliffs Resort	2757 Shell Beach Road	Pismo Beach
F. McClintocks Saloon	750 Mattie Road	Pismo Beach
Steamers of Pismo	1601 Price St	Pismo Beach

## San Luis Obispo County (North) Park N Ride Lots: Potential EV Charging

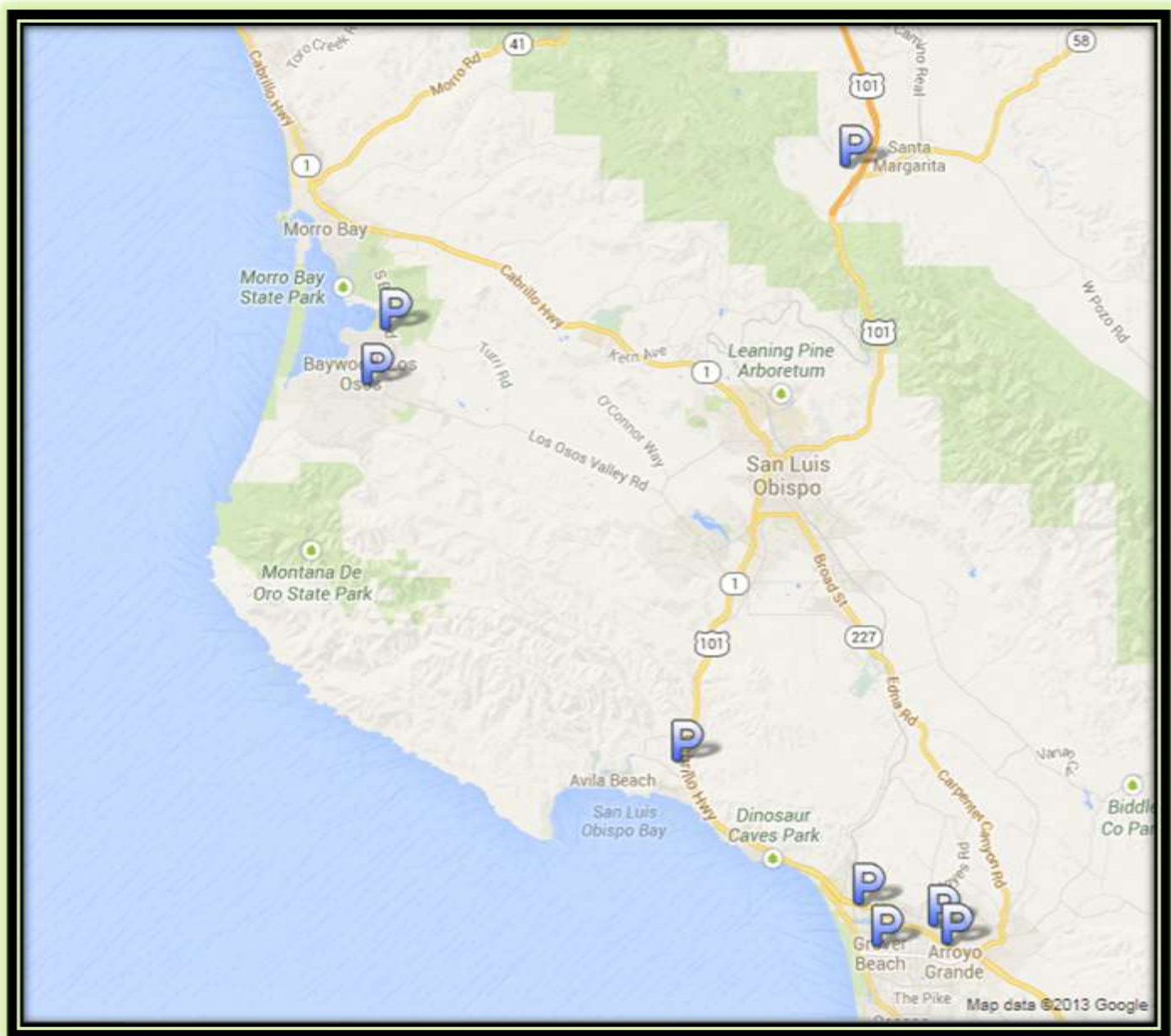


10th and K Streets  
 San Miguel  
 Paso Robles Transit Center  
 (near Robins Field Park),  
 800 Pine Street  
 Paso Robles  
 Woodland  
 Plaza/Walmart,  
 Niblick Rd

, Paso Robles  
 Las Tablas Rd Park N Ride  
 Las Tablas Rd at Hwy 101,  
 Templeton  
 St. Williams Church  
 6401 Santa Lucia Rd,  
 Atascadero  
 Route 41 East at Hwy 101  
 (Rabo Bank), Atascadero –

Curbaril Ave at Hwy 101,  
 Atascadero  
 Santa Rosa Rd at Hwy 101,  
 Atascadero  
 Santa Barbara Park N Ride  
 Lot, 12020 San Antonio  
 Road, Atascadero

## San Luis Obispo County (South) Park N Ride Lots: Potential EV Charging

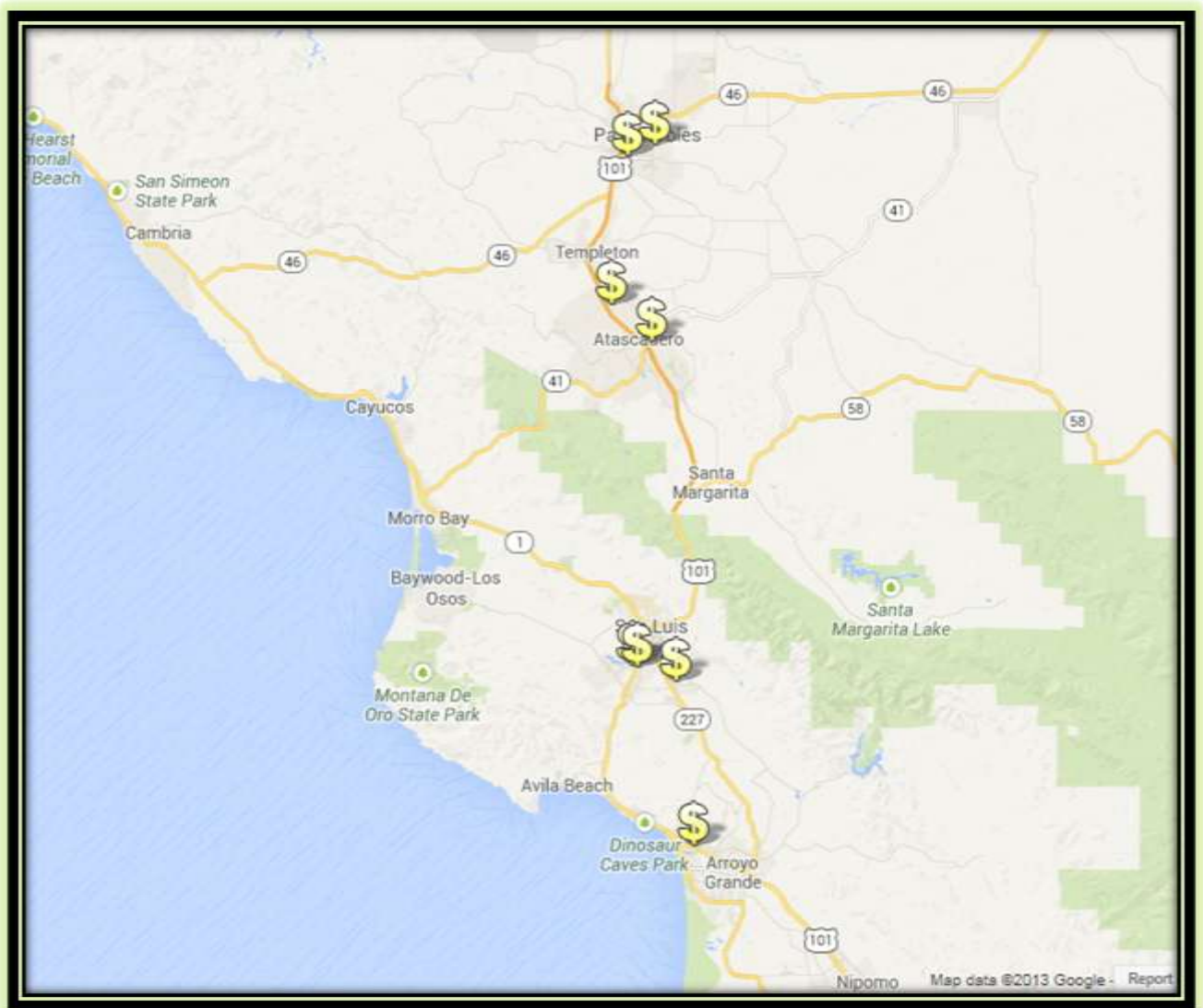


Santa Margarita Park N Ride, Highways 58/101  
 Nazarene Church  
 Santa Ysabel Ave and S. Bay Blvd, Los Osos  
 Vons Parking Lot, 1130 Los Osos Valley Road, Los Osos

Bob Jones Parking Lot  
 Ontario Road near Avila Beach  
 Pismo Premium Outlets, Five Cities Drive, Pismo  
 Grover Beach Park N Ride, Ramona Ave and N. 9th St, Grover Beach

Walmart  
 1168 W. Branch Street, Arroyo Grande  
 Arroyo Grande Park N Ride  
 Halcyon Road at Highway 101

## San Luis Obispo County Shopping Centers: Potential Public Level 2 EV Charging



Williams Plaza, 1131 Creston Road, Paso Robles

Woodland Plaza, 116 Niblick Road, Paso Robles

Atascadero Factory Outlets, 2290 El Camino Real, Atascadero

Marigold Center, 3940-8 Broad Street, San Luis Obispo

San Luis Obispo Promenade, 1601 El Mercado, San Luis Obispo

Central Coast Plaza, 445 Madonna Road, San Luis Obispo

Madonna Plaza, 221 Madonna Road, San Luis Obispo

Pismo Beach Premium Outlets, 33 Five Cities Drive, San Luis Obispo