




air pollution control district
SANTA BARBARA COUNTY

Agenda Item: H-2
Agenda Date: May 15, 2025
Agenda Placement: Regular
Estimated Time: 15 minutes
Continued Item: No

Board Agenda Item

TO: Air Pollution Control District Board

FROM: Aeron Arlin Genet, Air Pollution Control Officer 

CONTACT: David Harris, Engineering Division Manager, (805) 979-8311

SUBJECT: 2024 Air Toxics “Hot Spots” Program Annual Report

RECOMMENDATION:

Receive and file the 2024 Air Toxics “Hot Spots” Program Annual Report and associated presentation during which District staff will present the Report and discuss its content and significance.

DISCUSSION:

The California Air Toxics “Hot Spots” Information and Assessment Act (AB 2588) was enacted by the Legislature in 1987 to address public concern over the release of toxic air contaminants into the atmosphere. California Health & Safety Code §44300-44394 require the California Air Resources Board and local air districts to implement the “Hot Spots” Program. This public right-to-know law requires facilities emitting toxic substances to provide local air pollution control districts with information to identify sources of toxic air contaminants, assess air toxic risks, locate resulting “hot spots,” notify persons that may be exposed to significant risks, and develop effective strategies to reduce potential risks to the public.

In accordance with California Health & Safety Code §44363, the District has prepared the 2024 Air Toxics “Hot Spots” Program Annual Report to provide the public with information regarding the AB 2588 program in Santa Barbara County. This report provides information about emission inventories, health risk assessments, public notification procedures, and steps undertaken to reduce public health risks. This report summarizes the Air Toxic “Hot Spots” program elements, the current status of the program in Santa Barbara County, results of local health risk assessments, and conclusions drawn from the program to date.

ATTACHMENT:

A. 2024 Annual Report – AB 2588 Air Toxics “Hot Spots” Program

Aeron Arlin Genet, Air Pollution Control Officer

ATTACHMENT A

2024 Annual Report AB 2588 Air Toxics “Hot Spots” Program

May 15, 2025

Santa Barbara County Air Pollution Control District
Board of Directors

260 San Antonio Road, Suite A
Santa Barbara, California 93110



air pollution control district
SANTA BARBARA COUNTY

2024 ANNUAL REPORT

AB 2588 AIR TOXICS “HOT SPOTS” PROGRAM

Background

The Air Toxics “Hot Spots” Information and Assessment Act of 1987 (AB 2588) is a State of California public right-to-know law requiring local air districts to collect information about the location, type, and quantity of toxic compounds emitted into the air from specified local businesses and industry. The AB 2588 Program Annual Report is published to provide the public with information regarding the AB 2588 Program of the Santa Barbara County Air Pollution Control District (District). The enabling statutes (California Health & Safety Code [H&SC] §44300-44394) require the California Air Resources Board (CARB) and local air districts to implement the “Hot Spots” Program. This report describes the current reporting and evaluation status for facilities in Santa Barbara County being tracked under this program. This annual report is required by California H&SC §44363.

Introduction

The Air Toxics “Hot Spots” Information and Assessment Act requires businesses and industries throughout the state to:

- 1) Quantify and report their emissions of listed air toxics;
- 2) Assess the possible health risks from their emissions;
- 3) Notify members of the public who are exposed to significant risks attributable to their emissions; and,
- 4) Take steps to reduce this risk.

This annual report summarizes the status of the Air Toxics “Hot Spots” Program in Santa Barbara County as of December 31, 2024, and is being submitted to the Santa Barbara County Air Pollution Control District Board of Directors (District’s Board) in a public meeting on May 15, 2025, during which District staff will present the report and discuss its content and significance. Consistent with H&SC requirements, this report is also being provided to the County Board of Supervisors, City Councils, and Santa Barbara County Environmental Health Services officials. It is available on the District’s website, along with other information on District’s “Hot Spots” Program, at: <https://www.ourair.org/ab-2588-air-toxics-hot-spots-program/>.

Health Risk

As used in this report, the term “health risk” addresses the likelihood that exposure to a given toxic air contaminant under a given set of conditions will result in an adverse health effect. Health risk is affected by several factors, such as: the amount, toxicity, and concentration of the contaminant; the meteorological

conditions; the distance from emission sources to people; the distance between emission sources; the age, health, and lifestyle of the people living or working at a location; and, the duration of exposure to the toxic air contaminant.

Health effects are divided into cancer and non-cancer risks. “Cancer risk” refers to the increased chance of contracting cancer as a result of an exposure, and is expressed as a probability: chances-in-a-million. The values expressed for cancer risk do not predict actual cases of cancer that will result from exposure to toxic air contaminants. Rather, they state a possible risk of contracting cancer over and above the background level.

For non-cancer health effects, risk is characterized by a “Hazard Index” (HI), which is obtained by dividing the predicted concentration of a toxic air contaminant by a Reference Exposure Level (REL) for that pollutant that has been determined by health professionals, the California Office of Environmental Health Hazard Assessment (OEHHA) and the California Air Resources Board (CARB). RELs are used as indicators of the potential adverse effects of chemicals. A REL is the concentration at or below which no adverse health effects are anticipated for specific exposure duration. Thus, the HI is a measure of the exposure relative to a level of safety and is appropriately protective of public health. Each toxic air contaminant (TAC) emitted by the facility has a different emission rate and a different REL. A HI for each TAC is calculated separately at each modeled receptor location. A composite HI at each receptor is then calculated as the sum of HIs for each individual TAC. The maximum HI reported here is the maximum composite HI among all receptors.

In June 1993, the District’s Board adopted health risk notification levels (i.e., significant thresholds). The risk notification levels, shown below, were set at 10 per million for cancer risk and a hazard index of greater than 1.0 for non-cancer risk. Risk reduction thresholds were adopted by the District’s Board on September 17, 1998. These risk reduction thresholds were set at the same level as the public notification thresholds. The District’s Board-approved significant health risk thresholds are shown below.

	<u>Significance Thresholds</u>
Cancer risk:	≥10/million
Chronic non-cancer risk:	>1
8-hour chronic non-cancer risk:	>1
Acute non-cancer risk:	>1

Prioritization

Facilities subject to the AB 2588 program are prioritized as having a high, intermediate, or low probability of causing a significant health risk. During the prioritization analysis, a numerical score is calculated for each facility based on the magnitude of emissions from the facility, the toxic potency of the emitted compounds, and the distance from the emission point to the nearest receptor (i.e., location where a member of the public lives, works, or spends time). Determining a facility’s prioritization score is the least complex and most health conservative way of characterizing risk. The procedure is a simple calculation that incorporates conservative assumptions.

The District developed [*Santa Barbara County Air Pollution Control District Procedures for Prioritizing Facilities Pursuant to the Air Toxics “Hot Spots” Information and Assessment Act of 1987*](#), which were approved by the District’s Board in November 1990. The purpose of these procedures is to identify facilities that must submit AB 2588 risk assessments. The prioritization score is based on the annual and peak one-hour facility-wide emission rates of the toxic pollutants emitted by the facility and the potency/toxicity of these compounds. In addition to these two parameters, the prioritization score may be adjusted depending on the distance from the property boundary to the receptor, and if multipathway pollutants are emitted. A multipathway analysis considers exposure of airborne emissions not only by

direct exposure through inhalation, but also non-inhalation pathways. Significant exposure can occur for some pollutants following deposition of airborne material onto soil, skin, surface water and plants, as well as through ingestion of meat, dairy, eggs, and breast milk. For that reason, the prioritization scores for multipathway pollutants are multiplied by a factor of 10 to account for non-inhalation exposure. Separate prioritization scores for cancer and noncancer (chronic and acute) effects are calculated for the facility; the highest of these is considered the “Total Facility Score” or the “Final Score.”

Facilities are placed into one of the three prioritization categories based on their prioritization score, as shown in the table below. A high or intermediate prioritization score does not mean the facility poses a significant risk to public health; rather, it indicates that a more refined health risk assessment (HRA) is necessary to determine whether a significant risk exists. Only upon completion of the risk assessments will the risks from high and intermediate priority facilities be accurately characterized.

Total Facility Score (TFS)	Facility Designation
TFS > 10	High Priority – HRA is required
1 < TFS < 10	Intermediate Priority – HRA is required
TFS < 1	Low Priority – HRA is not required

Overview of Historical AB 2588 Program in Santa Barbara County

At the start of the AB 2588 program in the 1990’s, the District prioritized all facilities subject to AB 2588 using detailed facility-specific air toxic emission inventories and the District’s Board-approved prioritization procedure. Facilities with a high or intermediate priority were required to prepare a refined HRA using guidelines developed by OEHHA. If the HRA results exceeded the District Board-approved significant health risk thresholds, then risk reduction and public notification were required.

Over the course of the first two decades of AB 2588, the “Air Toxics “Hot Spots” Program greatly reduced the amount of toxic air pollution emitted in Santa Barbara County. In 1991, 51 sources subject to the Air Toxics “Hot Spots” Program exceeded the Board-approved significant health risk thresholds. By 2000, six significant risk sources remained; these sources were complex and the most difficult to implement sufficient risk reduction measures. By 2010, only two significant risk sources remained. Finally, by 2015, all 51 sources had reduced their risk below significance thresholds. In 2024, one new significant risk source, Lockheed Martin - SB Focalplane, was identified through the AB 2588 program. However, in 2024 Lockheed Martin implemented risk reduction measures to reduce the risk below significance thresholds, as discussed below in the *AB 2588 Projects in 2024* section of this report.

Reassessment in AB 2588

In 2015, OEHHA updated their *Air Toxics Hot Spots Program: Risk Assessment Guidelines* (HRA Guidelines) to ensure infants and children are explicitly addressed in assessing health risk, as required by Senate Bill 25. In response, the District began reevaluating facilities to determine preliminary prioritization scores¹ based on annual report information and the District’s Board-approved prioritization procedure. The District identified 71 high priority facilities and 71 intermediate facilities. Both high and intermediate priority facilities are required to complete emission inventories which are reviewed and approved by the District. After a facility’s emission inventory is approved by the District, an HRA is performed using OEHHA’s HRA Guidelines. If the HRA results exceed any of the District’s significant risk thresholds, the facility is required to notify the public and reduce their risk to less-than-significant levels. Attachment A of this report contains a flow diagram showing the AB 2588 reassessment process in Santa Barbara County.

¹ The prioritization scores are considered preliminary since they are based on annual report data instead of a District-approved air toxics emission inventory.

The District is in the process of evaluating facilities in the order of highest preliminary prioritization score to lowest, which generally means that the largest, most complicated facilities (e.g., Vandenberg Space Force Base, UCSB) are evaluated first. Attachment B of this report lists the preliminary prioritization scores. Table 1, *Stationary Source Status in AB 2588 Reassessment Process in Santa Barbara County*, at the end of this report lists the status of facilities currently being evaluated in the reassessment process in Santa Barbara County. The District's website also lists these facilities with additional information such as links to approval letters, plans and reports: <https://www.ourair.org/ab-2588-reassessment-tracking/>.

Air Toxics Emission Inventory

The first step in the District's AB 2588 reassessment process for a facility is the submittal of an Air Toxics Emission Inventory Plan (ATEIP). The purpose of the ATEIP is to ensure that the emission calculation methodology and all parameters that are included in quantifying the toxics emissions are provided to the District and approved by the District prior to implementation in the Air Toxics Emission Inventory Report. The ATEIP contains details such as flow diagrams, site plans, emission factors with references, source test information, property boundary coordinates, air dispersion modeling parameters and building information.

The second step of the AB 2588 process is preparing the Air Toxics Emission Inventory Report (ATEIR). The purpose of the ATEIR is to execute the emission calculation methodology described in the District-approved ATEIP. The ATEIR contains all emission calculations with documentation (i.e., written records, annual report data, source test reports, purchase records, etc.).

The ATEIP/Rs are large documents that typically require multiple iterations of review and revision prior to approval. Detailed review of the ATEIP/R is important to ensure that the HRA is based on quality data. To assist the facilities undergoing this process, the District developed [*Guidelines for Preparing Air Toxics Emission Inventory Plans and Reports*](#), which describes in detail the requirements for preparing an ATEIP and ATEIR in Santa Barbara County. The District first published these guidelines in 2019 to address the latest state and local requirements and has updated them multiple times since. In addition, the District created [*Approved Emission Factors for Toxic Air Contaminants*](#) to assist facilities in determining emission factors and emission calculation methodologies for their ATEIP/R.

Health Risk Assessments in Santa Barbara County

In Santa Barbara County, the third step in the AB 2588 reassessment process is to conduct a health risk assessment using the California Air Resources Board's Hotspots Analysis and Reporting Program (HARP) software based on the emission inventory developed in the ATEIP and ATEIR. To assist the facilities undergoing this process, the District created [*Modeling Guidelines for Health Risk Assessments*](#), which describes the requirements for performing HRAs in Santa Barbara County. The District completely revamped these guidelines in 2015 to be consistent with the latest state and local requirements. As the District has implemented the updated OEHHA guidance in both AB 2588 and permitting New Source Review (NSR) since 2015, substantial updates have been made to the HRA guidelines to address unique situations and more common errors in submitted HRAs.

HRAs performed for AB 2588 are reviewed by the District and by the OEHHA. Upon OEHHA and District approval of the HRA, the finalized HRA results are posted to the District's website: <https://www.ourair.org/ab-2588-reassessment-tracking/>. If the HRA results exceed any of the District's significant risk thresholds, public notification and risk reduction will commence.

Public Notification

Public notification is required if the results from an HRA show that the facility poses a significant risk to the community (ref: H&SC §44362 (b)). Any significant risk sources identified during the AB 2588 reassessment process will notify the affected public of the toxic risks to which they have been exposed once the HRAs have been finalized (i.e., the HRA is approved by the District and OEHHA). The District's Board-approved [*Public Notification Procedures*](#) for AB 2588 explain the process of notifying the public in Santa Barbara County.

Risk Reduction

Senate Bill 1731, Risk Reduction Audits and Plans (RRAPs), was signed into law in 1992 as an adjunct to the Air Toxics "Hot Spots" inventory and assessment requirements of AB 2588. This law requires facilities that pose a significant risk to prepare an RRAP detailing proposed risk reduction measures at the facility. Once the HRA is finalized, if a significant risk is identified, the facility is required to develop and implement an RRAP. Implementation of these measures must reduce the risks below the significant health risk thresholds within five years of the date the plan is submitted to the District.

RRAPs are usually prepared on a facility-by-facility basis; however, CARB has developed air toxic control measures (ATCMs) for certain industry types. State law provides local air districts authority to enforce these ATCMs. Categories identified for ATCMs include diesel engines, dry cleaners, medical waste incinerators, nonferrous metal melting, cooling towers using hexavalent chromium, and ethylene oxide sterilizers. Affected sources within the District are now complying with these ATCMs. CARB lists the ATCM regulations on their website: <https://ww2.arb.ca.gov/resources/documents/airborne-toxic-control-measures>.

Similarly to ATCMs, the District enforces the federal National Emission Standards for Hazardous Air Pollutants/Maximum Achievable Emission Standards (NESHAP/MACT) on all applicable stationary source facilities. These NESHAP/MACT regulations have produced dramatic air toxic emission reductions from an array of source categories located in the Santa Barbara County such as Aerospace, Internal Combustion Engines, Miscellaneous Coating Manufacturing, Municipal Solid Waste Landfills, and Plastics and Surface Coatings. USEPA lists the federal NESHAP/MACT standards on their website: <https://www.epa.gov/stationary-sources-air-pollution/national-emission-standards-hazardous-air-pollutants-neshap-8>.

AB 2588 Projects in 2024

The District provided comments on Pacific Coast Energy Company – Orcutt Hill's and NuSil Technology's ATEIPs as well as UCSB's HRA in 2024. We also began reviewing Santa Maria Regional Landfill's ATEIP and Vandenberg Space Force Base's HRA in 2024. Additional AB 2588 work was performed on other facilities, such as Lompoc Sanitary Landfill. For Lompoc Sanitary Landfill, the District reviewed and approved the 2018 Inventory Year ATEIR, but requested an updated Inventory Year to 2024 to ensure more relevant HRA results. ATEIP/R and HRA submittal dates and any approval dates are listed in Table 1, *Stationary Source Status in AB 2588 Reassessment Process in Santa Barbara County*.

In 2024, the District reviewed an AB 2588 HRA for Lockheed Martin - SB Focalplane for Inventory Year 2018. Based on the HRA results, the operations at the Lockheed Martin - SB Focalplane stationary source did not present a significant cancer or chronic non-cancer risk to the surrounding community. However, the HRA results showed a significant acute non-cancer risk on public roadways immediately adjacent to the Lockheed Martin facility in the Santa Barbara Business park. For that reason, public notification and risk reduction are required. The acute non-cancer risk was created by nickel emitted by

two laser welders used on site. Lockheed Martin has reduced their risk by implementing the following risk reduction measures: 1) permanently remove one laser welder; and 2) install a fume extractor on the remaining laser welder to reduce metal emissions by 99.97 percent. These risk reduction measures have been completed and are currently in the RRAP process to ensure the measures are permanent and enforceable.

The HRA for Lockheed Martin - SB Focalplane is currently under review with OEHHA. Upon approval from OEHHA, public notification will commence. Because there are no actual residences or businesses within the significant risk footprint, the public notification will occur via the District's website. The acute non-acute risk isopleth for Lockheed Martin - SB Focalplane is shown in Attachment C.

Industrywide Sources

Most of the sources subject to the "Hot Spots" Program in Santa Barbara County are in the small business or industrywide category. Each of these businesses emits less than 10 tons per year of criteria pollutants. For these sources, the District compiles their air toxics emissions inventory based on their annual report and/or responses to surveys completed and submitted by the operator. The District performs the HRA for small industrywide businesses based on risk assessment methodologies developed by the California Air Pollution Control Officers Association (CAPCOA) and OEHHA, which use generalized modeling parameters based on surveys of industrywide sources throughout the state. If any of the industrywide HRA results exceed a significant health risk threshold, a refined risk assessment is conducted using site-specific data. If this refined assessment also indicates a significant risk, the facility is required to notify the public and implement measures to reduce their risk through an RRAP. The information below summarizes the District's efforts on industrywide sources throughout the County.

Gasoline Dispensing Facilities and Gasoline Bulk Plants

In 2018 and 2019, the District conducted an industrywide prioritization screening for gas stations using the District Board-approved prioritization guidelines. Based on these results, all gas stations in Santa Barbara County are exempt from AB 2588. Furthermore, two facilities with bulk service stations (J.B. Dewar at 612 W. Boone St. and Trojan Petroleum at 1665 W. Betteravia Rd.) were placed on the intermediate priority list for the District's "Hot Spots" reassessment project. A refined HRA for AB 2588 was not required for any gas station based on the 2018 and 2019 gas station prioritizations. All new and modified gas stations are evaluated under the District's NSR program to ensure that no new significant risk sources are permitted.

Auto Body Shops

In 1996, CAPCOA published the *Auto Bodyshop Industrywide Risk Assessment Guidelines* to provide air districts guidance in preparing toxic emission inventories and HRAs. In response to OEHHA's revised 2015 HRA Guidelines, CARB and CAPCOA are now developing new risk assessment guidance for auto body shops. Once the guidance is finalized, the District will apply the CARB/CAPCOA-approved risk assessment guidelines to auto body shops.

Perchloroethylene Dry Cleaners

In 1991, CARB identified perchloroethylene as a toxic air contaminant. Furthermore, on October 14, 1993, CARB adopted an ATCM for Emissions of Perchloroethylene from Dry Cleaning Operations to reduce emissions of perc from dry cleaning facilities. On January 25, 2007, the ATCM was amended to phase out the use of perchloroethylene dry cleaning machines and related equipment entirely by January 1, 2023. Because of that amendment, dry cleaners located in Santa Barbara County phased out the use of perchloroethylene dry cleaning machines and related equipment at their operations. In 2018, the

last perchloroethylene dry cleaner in Santa Barbara County removed their perchloroethylene dry cleaning machines. As a result, there are no longer dry cleaners in the District's AB 2588 program.

Preventing New Significant Risk Sources

CARB Guidelines allow local air districts to utilize air toxics analyses conducted as part of its toxics permitting process in-lieu of requiring separate quantification of air toxics emissions to satisfy the Air Toxics "Hot Spots" Act. These guidelines require that the New Source Review (NSR) permit contain conditions to ensure calculated toxic risk is not exceeded. Currently, the majority of the District's toxic work occurs under NSR permitting and California Environmental Quality Act (CEQA) review to ensure that no new significant risk facilities are permitted. Since OEHHA's updated guidelines were published in 2015, the District has developed two screening tools for the following commonly permitted sources: diesel internal combustion engines (DICE) and contaminated soil cleanup (CSC) systems. These screening tools use health conservative assumptions to assess the risk with minimal staff resources. Other simple facilities may be screened using an AERSCREEN analysis (USEPA's screening air dispersion model), while medium to large facilities require a refined HRA. Tables 2 through 5 at the end of this report identify facilities that have been evaluated in the District's NSR program or through the District's CEQA review.

NSR and CEQA Projects in 2024

The District performed or reviewed 14 DICE HRA screenings and two CSC HRA screenings for NSR in 2024, which are listed in Tables 2 and 3 at the end of this report. Additionally, in 2024, the District performed two HRA screenings for CEQA projects, which are listed in Table 4 at the end of this report. In 2024, nine refined HRAs were performed or reviewed by the District for NSR and/or CEQA, which are listed in Table 5 at the end of this report. The refined HRAs varied in complexity, from simpler projects such as gasoline dispensing facilities (GDFs) to the larger, more complex projects such as Space Exploration Technologies and the County of Santa Barbara - Tajiguas Landfill Capacity Increase.

Updated HRA and Modeling Guidance Documents in 2024

In 2024, the District updated the meteorological data for 2019-2023, as documented in the District's November 12, 2024 Internal Memorandum regarding *Approved 2019-2023 Meteorological Data*. Updating the met sets was a substantial effort that spanned months, resulting in eleven met sets that are available on our [website](#). Providing these met sets to our sources ensures that HRAs use the most current and representative meteorological data in their air dispersion modeling.

In 2024, the District updated the *Gasoline Station Health Risk Assessment Application Form-25T* and associated emission factors, as documented in the District's October 22, 2024 Internal Memorandum regarding *GDF Emission Factors for Phase I EVR and Phase II EVR for UST and AST Systems*. Form-25T provides specific modeling guidance for GDFs, including emission factors for toxic pollutants. Providing clear direction on GDF HRAs helps reduce the iterative review and revision that can be burdensome for small sources.

The District began work in 2024 on updating HRA guidance documents, including *Modeling Guidelines for Health Risk Assessments (Form-15i)* and associated *Modeling Protocol Tables for HRA Report*, which were finalized in early 2025. Work also began in 2024 on the District's *Modeling Guidelines for Air Quality Impact Assessments* and creating *Modeling Protocol Tables for AQIA Report*, which were finalized in early 2025. Updating the guidance documents with the latest federal, state and local regulations provides sources with an important resource. These guidance documents reduce the time required to perform HRAs and write reports, in addition to reducing the District's review time.

Summary

Toxic emissions from regulated stationary sources in Santa Barbara County have been greatly reduced since 1989 due to the Air Toxic “Hot Spots” Act programs implemented at the District level. The District is reassessing every facility in AB 2588 to ensure that the updated 2015 OEHHA risk methodology is used to estimate health risk. Furthermore, the District’s Toxics NSR program ensures that new significant risk sources are not permitted.

It is important to note that other non-stationary sources such as motor vehicles are the largest contributing source of toxic air contaminants and that mobile, area and natural sources are also key contributors of toxic air contaminants; yet, mobile and area sources are typically regulated and enforced at the state and federal level, not by the District. Reductions from these source types have long been occurring and are ongoing, such as the evolution of cleaner low-emission and zero-emission vehicles.

The District continues to implement and enforce the state’s ATCMs on all applicable stationary source facilities, targeting specific toxic air contaminants and sources requiring stringent controls and, in some cases, complete elimination of air polluting products or equipment. Similarly, the District implements and enforces the federal NESHAP/MACT on all applicable stationary source facilities.

The District has created guidance documents for ATEIP/R submittals and for HRAs, which not only increase the quality of submittals for the AB 2588 program and Toxics NSR program, but also decrease the amount of time spent by staff to answer basic questions.

Conclusion

Ongoing implementation of the Air Toxics “Hot Spots” Act Program will continue to reduce local public health risks associated with emissions of toxic air contaminants. Additionally, those efforts will improve information on levels of exposure and risk as well as identifying compounds, processes, and facilities that are potentially causing significant risks. Furthermore, while AB 2588 is aimed at reducing risk at existing sources, the District’s NSR program and CEQA review ensure that no new significant risk sources are created.

References

- California Air Pollution Control Officers Association (CAPCOA). September 1996. *CAPCOA Air Toxics “Hot Spots” Program Auto Bodyshop Industrywide Risk Assessment Guidelines*. <https://ww2.arb.ca.gov/sites/default/files/classic/ab2588/rrap-iwra/autobody.pdf>.
- California Air Resources Board. Accessed April 10, 2025. *AB 2588 Air Toxics “Hot Spots”*. <https://ww2.arb.ca.gov/our-work/programs/ab-2588-air-toxics-hot-spots>.
- California Air Resources Board. Accessed April 10, 2025. *Hot Spots Analysis & Reporting Program*. <https://ww2.arb.ca.gov/our-work/programs/hot-spots-analysis-reporting-program>.
- California Health and Safety Code Sections 44300-44394. Air Toxics “Hot Spots” Information and Assessment.
- Office of Environmental Health Hazard Assessment. February 2015. *Air Toxics Hot Spots Program Risk Assessment Guidelines: Guidance Manual for Preparation of Health Risk Assessments*. <https://oehha.ca.gov/media/downloads/crn/2015guidancemanual.pdf>.
- Santa Barbara County Air Pollution Control District. November 1990. *Santa Barbara County Air Pollution Control District Procedures for Prioritizing Facilities Pursuant to the Air Toxics “Hot Spots” Information and Assessment Act of 1987*. <https://www.ourair.org/wp-content/uploads/FinalSBCAPCDPrioritizationProcedures.pdf>.

- Santa Barbara County Air Pollution Control District. June 1993. *Air Toxics “Hot Spots” Information and Assessment Act of 1987 Public Notification Procedures*. <https://www.ourair.org/wp-content/uploads/SBCAPCD-Public-Notification-Procedures-for-AB-2588.pdf>.
- Santa Barbara County Air Pollution Control District. December 2023. *Guidelines for Preparing Air Toxics Emission Inventory Plans and Reports*. <https://www.ourair.org/wp-content/uploads/Guidelines-for-Preparing-ATEIPs-and-ATEIRs-in-Santa-Barbara-County.pdf>.
- Santa Barbara County Air Pollution Control District. December 2023. *Approved Emission Factors for Toxic Air Contaminants*. <https://www.ourair.org/wp-content/uploads/SBCAPCD-Approved-Emission-Factors-for-TACs.pdf>.
- Santa Barbara County Air Pollution Control District. December 2023. *SBCAPCD-Approved TAC Emission Factors.xlsx*. <https://www.ourair.org/wp-content/uploads/SBCAPCD-Approved-TAC-Emission-Factors.xlsx>.
- Santa Barbara County Air Pollution Control District’s Internal Memorandum. October 22, 2024. Cobbs, R. *GDF Emission Factors for Phase I EVR and Phase II EVR for UST and AST Systems*.
- Santa Barbara County Air Pollution Control District. October 28, 2024. *Gasoline Station Health Risk Assessment Application Form -25T*. <https://www.ourair.org/wp-content/uploads/apcd-25T.pdf>
- Santa Barbara County Air Pollution Control District. February 2025. *Modeling Guidelines for Health Risk Assessments*. <https://www.ourair.org/wp-content/uploads/apcd-15i.pdf>.
- Santa Barbara County Air Pollution Control District. February 2025. *Modeling Protocol Tables for HRA Report*. <https://www.ourair.org/wp-content/uploads/Modeling-Protocol-Tables-for-HRA-Report-1.xlsx>.
- Santa Barbara County Air Pollution Control District. February 2025. *Modeling Guidelines for Air Quality Impact Assessments*. <https://www.ourair.org/wp-content/uploads/aqia.pdf>
- Santa Barbara County Air Pollution Control District. February 2025. *Modeling Protocol Tables for AQIA Report*. <https://www.ourair.org/wp-content/uploads/Modeling-Protocol-Tables-for-AQIA-Report.xlsx>.
- Santa Barbara County Air Pollution Control District. Accessed May 7, 2025. *Meteorological Data*. <http://www.ourair.org/metdata/>.

Tables

- Table 1: Stationary Source Status in AB 2588 Reassessment Process in Santa Barbara County
- Table 2: NSR DICE HRA Screenings in 2024
- Table 3: NSR CSC HRA Screenings in 2024
- Table 4: NSR/CEQA HRA Screenings in 2024
- Table 5: Refined HRAs for NSR & CEQA in 2024

Attachments

- A: AB 2588 Flow Diagram in Santa Barbara County
- B: Preliminary Prioritization Scores
- C: Screening Acute Non-Cancer Risk Isopleth for Lockheed Martin - SB Focalplane

Table 1: Stationary Source Status in AB 2588 Reassessment Process in Santa Barbara County

Stationary Source Name	Inventory Year	ATEIP Submittal Dates	ATEIP Status	ATEIR Submittal Dates	ATEIR Status	HRA Submittal Dates	HRA Status
Pacific Coast Energy Company - Orcutt Hill	2024	9/19/2024; 2/17/2025	Conditional Approval 3/10/2025	NA	NA	NA	NA
Lompoc Sanitary Landfill	2024	9/1/2025	NA	NA	NA	NA	NA
NuSil Technology	2023	4/12/2024; 5/10/2024; 11/1/2024; 1/24/2025; 3/21/2025	Under Review	1/24/2025; 3/21/2025	Under Review	NA	NA
Santa Maria Regional Landfill	2022	9/12/2023 7/30/2024	Under Review	NA	NA	NA	NA
UCSB	2018	12/2/2019; 7/9/2020; 3/24/2023	Final Approval 3/30/2023	8/24/2021; 3/24/2023; 4/3/2023; 4/18/2023	Final Approval 5/3/2023	6/15/2023; 10/22/2024	Under Review
Vandenberg Space Force Base	2018	11/27/2019; 7/1/2020; 6/11/2021	Final Approval 2/3/2022	6/11/2021; 5/31/2022; 6/23/2022; 1/17/2023	Conditional Approval 3/29/2022	1/17/2023; 7/1/2024	Reviewed/revised by District 3/20/2025; Under review by OEHHHA
Lockheed Martin – SB Focalplane	2018	11/26/2019; 3/31/2020	Conditional Approval 1/31/2022	2/8/2021	Conditional Approval 1/31/2022	8/1/2022; 7/1/2024	Reviewed/revised by District 12/19/2024; Under review by OEHHHA
E & B - South Cuyama	2018	12/2/2019; 8/28/2020; 8/22/2022	Under Review	NA	NA	NA	NA
Raytheon-Buildings B 1/2/3 (Infrared)	2018	3/31/2020; 1/29/2021	Comments provided 12/21/2021	NA	NA	NA	NA
Imerys Filtration Minerals, Inc.	2018	12/13/2019	Comments provided 5/27/2021	NA	NA	NA	NA

Table 1: Stationary Source Status in AB 2588 Reassessment Process in Santa Barbara County

Stationary Source Name	Inventory Year	ATEIP Submittal Dates	ATEIP Status	ATEIR Submittal Dates	ATEIR Status	HRA Submittal Dates	HRA Status
Granite - Buellton	2018	1/3/2020; 2/7/2020; 8/6/2020	Under Review	NA	NA	NA	NA
CalPortland - Garey Plant	2018	12/4/2019; 7/6/2020	Under Review	NA	NA	NA	NA
Sisquoc Sand, Rock and Gravel Plant	2018	12/30/2019; 2/7/2020	Under Review	NA	NA	NA	NA
Russell Ranch Lease	2018	10/16/2020	Under Review	NA	NA	NA	NA
Barham Ranch	2018	6/4/2020	Under Review	NA	NA	NA	NA
Santa Barbara Cottage Hospital	2018	5/27/2020	Under Review	NA	NA	NA	NA
So Cal Gas - La Goleta	2018	3/24/2020; 5/1/2020	Under Review	NA	NA	NA	NA
Hanson Aggregates-Goleta Batch Plant	2018	4/17/2020	Under Review	NA	NA	NA	NA
Lompoc Oil Fields	2018	2/5/2020; 3/27/2020	Under Review	NA	NA	NA	NA

Table 2: NSR DICE HRA Screenings in 2024

Facility Name	Permit Number	Cancer Risk (chances per million)	Chronic HI
Firefly Aerospace	PTO Mod 16064-01	6.27	<0.1
Vandenberg SFB, Space Launch Delta 30	ATC 16320	7.8	<0.1
Heirloom Valley, LLC.	ATC 16289	<0.1	<0.1
La Patera (990 N) ES Engine	ATC-PTO 16204	0.7	<0.1
Stagliano Vineyard, LLC.	ATC 16283	3.0	<0.1
UCSB	ATC 16255	5.0	0.3
Google - Castilian Drive	ATC 16264	7.7	<0.1
Vandenberg SFB, Space Launch Delta 30	ATC 16257	7.6	0.1
L3Harris Technologies, Inc.	ATC Mod 16137-01	1.3	<0.1
Montecito Water District – 785 Romero Canyon	ATC 16228	3.4	<0.1
Google - Mentor Drive	ATC-PTO16106	3.0	<0.1
Romero Canyon (817) ES Engine	ATC-PTO 16197	5.5	<0.1
United Launch Alliance – SLC 3	PTO 16146	<0.1	NA
Vandenberg SFB, Space Launch Delta 30	ATC 16210	7.6	0.1

Table 3: NSR CSC HRA Screenings in 2024

Facility Name	Permit Number	Cancer Risk (chances per million)	Chronic HI	Acute HI
Hollister Ave, 6831 (CSC)	ATC 16302	2.9	<0.1	<0.1
Gutierrez St, 220 W. (CSC)	ATC Mod 15821	8.4	<0.1	<0.1

Table 4: NSR/CEQA HRA Screenings in 2024

Facility Name	Permit Number	Cancer Risk (chances per million)	Chronic HI	Acute HI
PCEC Microturbine Project	CEQA	1.0	<0.1	<0.1
UCSB GDF	CEQA	1.8	<0.1	0.7

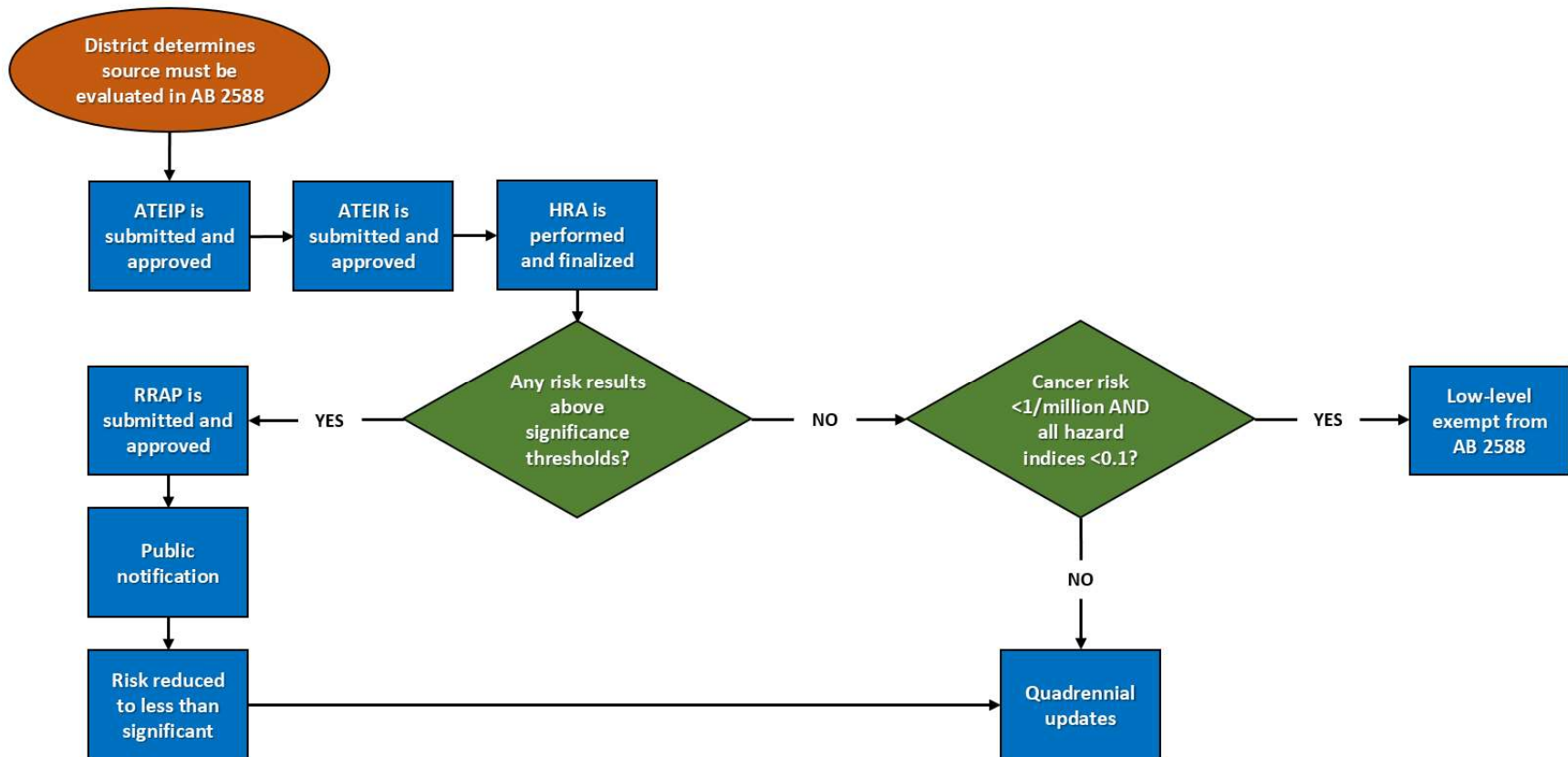
Table 5: Refined HRAs for NSR & CEQA in 2024

Facility Name	Permit Number	Status	Cancer Risk (chances per million)	Chronic HI	8-Hour Chronic HI	Acute HI
Betteravia Chevron GDF	ATC 16181	Approved	2.5	0.01	0.01	0.25
Clark Ave, 1620 E. (MVFF)	ATC 16277	Approved	0.6	<0.1	<0.1	1.0
South Cuyama Unit (SCU) - Project Only	ATC 16249	Approved	0.3	<0.1	<0.1	<0.1
La Goleta - Project Only	ATC 16080	Approved	0.2	<0.1	<0.1	<0.1
Google - Castilian Drive	ATC 15851	Approved	6.91	0.06	<0.01	0.84
Blosser, 1505 S. (MVFF)	ATC 16036	Approved ¹	2.3	<0.1	<0.1	0.6
Space Exploration Technologies	ATCs 16172 and 16173	Approved ²	0.7	<0.1	<0.1	0.7
Mission Dr, 2015 (MVFF)	ATC-PTO 15853	Withdrawn ³	NA	NA	NA	NA
County of Santa Barbara - Tajiguas Landfill Capacity Increase	CEQA	Approved	9.8	0.3	<0.1	1.0

Notes:

1. The results shown in Table 5 for ATC 16036 were based on the District's revised HRA. Although the HRA passed, ATC 16036 has not been issued as the project is still awaiting approval from the City of Santa Maria.
2. The HRA was reviewed and approved, however, other incompleteness items remain for this project. For that reason, ATCs 16172 and 16173 have not yet been issued.
3. The application for ATC-PTO 15853 was withdrawn due to failing the health risk assessment.

Attachment A
AB 2588 Flow Diagram in Santa Barbara County



Attachment B

Preliminary Prioritization Scores

SSID	Stationary Source Name	SIC Code	SIC Name	SBCAPCD Cancer Score	SBCAPCD Acute Score	SBCAPCD Chronic Score	SBCAPCD Final Score
01063	South Ellwood Field	13	Oil And Gas Extraction	580	159	8.6	580
02667	Pacific Coast Energy Company- Orcutt Hill	13	Oil And Gas Extraction	283	61	64	466
08713	Santa Maria Regional Landfill	49	Electric, Gas, And Sanitary Services	433	8.5	84	433
01195	Vandenberg Air Force Base	97	National Security And Intl. Affairs	418	0.88	10.7	418
01661	Sisquoc Sand, Rock and Gravel Plant	14	Nonmetallic Minerals, Except Fuels	392	19	273	392
01735	Imerys Filtration Minerals, Inc.	14	Nonmetallic Minerals, Except Fuels	256	25	360	360
01536	Granite - Buellton	29	Petroleum And Coal Products	275	22	312	312
01482	ExxonMobil - SYU Project	13	Oil And Gas Extraction	262	2.5	4.0	262
04411	CalPortland - Garey Plant	14	Nonmetallic Minerals, Except Fuels	82	16	226	226
08772	Lompoc Sanitary Landfill	49	Electric, Gas, And Sanitary Services	196	3.1	35	196
09313	Lockheed Martin - SB Focalplane	38	Instruments And Related Products	189	0.18	3.1	189
01073	E & B - South Cuyama	13	Oil And Gas Extraction	189	24	22	189
02560	ERG Resources - Cat Canyon West	13	Oil And Gas Extraction	142	10.1	36	159
02795	UCSB	82	Educational Services	159	2.0	34	159
01793	Marian Medical Center	80	Health Services	113	16	14	113
02638	Barham Ranch	13	Oil And Gas Extraction	108	51	37	108
03640	Microdyn-Nadir US	35	Industrial Machinery And Equipment	105	0.09	0.48	105
05019	So Cal Gas - La Goleta	13	Oil And Gas Extraction	101	29	29	101
03706	Foxen Canyon Landfill	49	Electric, Gas, And Sanitary Services	84	1.5	18	84
08678	Los Flores	13	Oil And Gas Extraction	75	9.7	8.8	75
02035	Raytheon-Buildings B 1/2/3 (Infrared)	36	Electronic & Other Electric Equipment	70	0.15	2.3	70
02200	Clark Avenue Source	13	Oil And Gas Extraction	49	6.3	5.8	69
02020	Santa Barbara Cottage Hospital	80	Health Services	65	0.42	7.5	65
01517	Santa Maria Energy - Orcutt Field	13	Oil And Gas Extraction	64	6.8	5.9	64
01226	Buellflat Rock Company	14	Nonmetallic Minerals, Except Fuels	22	4.3	61	61
04640	Greka Refining Company	13	Oil And Gas Extraction	58	13	15	58
02785	FCC Lompoc	92	Justice, Public Order, And Safety	57	0.68	12	57
04632	Pt. Pedernales	13	Oil And Gas Extraction	56	1.9	4.0	56
10910	Greka North Cat Canyon	13	Oil And Gas Extraction	55	3.8	7.0	55
03638	Lompoc Oil Fields	13	Oil And Gas Extraction	52	6.7	6.1	54
04639	Russell Ranch Lease	13	Oil And Gas Extraction	48	7.8	6.7	48
03707	County of SB-Tajiguas Landfill	49	Electric, Gas, And Sanitary Services	47	3.2	11	47
03886	Hanson Aggregates-Goleta Batch Plant	14	Nonmetallic Minerals, Except Fuels	45	0.14	9.7	45
10897	PetroRock - Sisquoc	13	Oil And Gas Extraction	38	1.3	14	38
04630	Casmalia	13	Oil And Gas Extraction	38	4.5	4.8	38
11052	Elings Park Landfill	49	Electric, Gas, And Sanitary Services	37	0.33	2.7	37
08675	SMV East	13	Oil And Gas Extraction	25	6.4	4.5	35
08639	Granite Construction Company	14	Nonmetallic Minerals, Except Fuels	13	2.5	35	35
08702	Zaca Field	13	Oil And Gas Extraction	29	3.4	4.1	31

Attachment B

Preliminary Prioritization Scores

SSID	Stationary Source Name	SIC Code	SIC Name	SBCAPCD Cancer Score	SBCAPCD Acute Score	SBCAPCD Chronic Score	SBCAPCD Final Score
01366	CalPortland Construction - Donovan Rd	14	Nonmetallic Minerals, Except Fuels	31	0.14	7.9	31
11165	Harris Corporation	47	Transportation Services	31	0.00	0.21	31
02059	City of Santa Barbara - El Estero WWTP	49	Electric, Gas, And Sanitary Services	31	5.3	3.9	31
01516	GPS River Rock Products	14	Nonmetallic Minerals, Except Fuels	11	1.8	31	31
08813	Agri-Chip	52	Building Materials & Garden Supplies	29	0.24	1.7	29
02680	Gato Ridge	13	Oil And Gas Extraction	26	3.3	3.1	26
10309	Lash Const. (5 S. Calle Cesar Chavez)	14	Nonmetallic Minerals, Except Fuels	12	1.8	25	25
03909	Goleta Valley Cottage Hospital	80	Health Services	23	0.11	1.9	23
01249	Cemex - Santa Barbara	14	Nonmetallic Minerals, Except Fuels	23	0.10	4.6	23
11136	ERG Resources - Cat Canyon East	13	Oil And Gas Extraction	20	2.5	2.7	20
01325	The Point Arguello Project	13	Oil And Gas Extraction	19	1.1	1.1	19
02372	CalPortland Construction - Solvang	14	Nonmetallic Minerals, Except Fuels	19	0.08	4.4	19
03654	Dudley Hoffman Crematorium	72	Personal Services	19	0.51	10.1	19
11026	City of Santa Barbara - Fowler Road	45	Transportation By Air	18	0.12	2.1	18
02658	Greka South Cat Canyon	13	Oil And Gas Extraction	17	4.3	3.5	17
04421	CalPortland - Hot Mix Asphalt Plant	14	Nonmetallic Minerals, Except Fuels	17	0.32	4.5	17
10263	Montecito Retirement Association	83	Social Services	17	0.05	0.95	17
10630	Mission Ready Mix - Goleta	14	Nonmetallic Minerals, Except Fuels	16	0.07	3.2	16
01920	Valley Rock Ready Mix, Inc.	14	Nonmetallic Minerals, Except Fuels	16	0.07	3.1	16
02997	Welch-Ryce-Haider Funeral Chapels	72	Personal Services	14	0.38	7.6	14
10927	Starbuck-Lind Mortuary	72	Personal Services	14	0.37	7.4	14
10932	Santa Barbara High School	82	Educational Services	13	0.31	5.1	13
04631	Orcutt	13	Oil And Gas Extraction	13	1.6	1.5	13
11166	United Launch Alliance	47	Transportation Services	13	0.15	1.4	13
10641	General Services - County Administration	91	Executive, Legislative, And General	13	0.08	1.5	13
10926	San Ysidro Ranch	70	Hotels And Other Lodging Places	12	0.00	0.08	12
02026	County of Santa Barbara South Jail	92	Justice, Public Order, And Safety	12	0.15	2.6	12
01944	Conway Oil, Inc. - Magenheimer	13	Oil And Gas Extraction	12	8.8	1.5	12
01405	Conway - Union Sugar	13	Oil And Gas Extraction	11	4.5	1.6	11
03928	Conway Oil, Inc. - Hancock	13	Oil And Gas Extraction	11	1.3	1.6	11
01099	Sierra Resources, Incorporated	13	Oil And Gas Extraction	10.2	1.1	1.6	10.2
10761	Lompoc Valley Medical Center	80	Health Services	10.2	0.16	2.8	10.2
10635	Health Care Services Campus	94	Administration Of Human Resources	9.7	0.11	1.9	9.7
03890	Raytheon - Building B-8	36	Electronic & Other Electric Equipment	9.5	0.06	0.07	9.5
04488	Four Seasons Biltmore	70	Hotels And Other Lodging Places	9.5	0.22	3.7	9.5
09833	The Bacara Ritz-Carlton, Santa Barbara	70	Hotels And Other Lodging Places	9.3	0.20	3.4	9.3
11137	Luton Lease	13	Oil And Gas Extraction	8.4	0.87	1.4	8.4
01883	Lynch Ready Mix Concrete Company, Inc.	14	Nonmetallic Minerals, Except Fuels	8.4	0.00	1.8	8.4
01261	Carpinteria Sanitary District WWTP	49	Electric, Gas, And Sanitary Services	8.2	0.00	0.05	8.2

Attachment B

Preliminary Prioritization Scores

SSID	Stationary Source Name	SIC Code	SIC Name	SBCAPCD Cancer Score	SBCAPCD Acute Score	SBCAPCD Chronic Score	SBCAPCD Final Score
11048	SB County Public Works	49	Electric, Gas, And Sanitary Services	8.1	0.02	0.15	8.1
01398	Conway - Enos	13	Oil And Gas Extraction	7.9	0.84	0.93	7.9
01551	Gordon Sand - Guadalupe Division	14	Nonmetallic Minerals, Except Fuels	2.7	0.40	7.6	7.6
10933	Dos Pueblos High School	82	Educational Services	7.3	0.17	2.8	7.3
10708	Innovative Micro Technology, Inc. (IMT)	36	Electronic & Other Electric Equipment	7.0	0.16	2.7	7.0
02030	Santa Barbara Humane Society	86	Membership Organizations	7.0	0.19	3.8	7.0
10587	Kang Family Partners LLC dba SYV Marriott	70	Hotels And Other Lodging Places	6.6	0.09	1.6	6.6
02740	Orcutt Pump Station	13	Oil And Gas Extraction	6.1	0.46	1.5	6.1
01019	Allan Hancock College	82	Educational Services	5.9	0.07	1.3	5.9
10936	Santa Barbara Junior High School	82	Educational Services	5.6	0.13	2.2	5.6
09973	Apeel Sciences	38	Instruments And Related Products	5.4	0.10	1.7	5.4
10905	Santa Ynez Valley Union High School Dist	82	Educational Services	5.3	0.12	2.0	5.3
10578	The Fess Parker a Doubletree by Hilton Resort	70	Hotels And Other Lodging Places	5.1	0.07	1.2	5.1
02077	City of Santa Maria WWTP	49	Electric, Gas, And Sanitary Services	4.9	0.24	0.17	4.9
04971	Raytheon-Hollister (Electronic Warfare)	36	Electronic & Other Electric Equipment	4.9	0.00	0.03	4.9
10568	Magner-Maloney Funeral Home	72	Personal Services	4.8	0.13	2.6	4.8
11281	FLIR Systems, Inc.	38	Instruments And Related Products	4.8	0.21	1.5	4.8
10222	Careaga LA #2	13	Oil And Gas Extraction	4.6	0.47	0.40	4.6
08742	Raytheon - Lompoc	36	Electronic & Other Electric Equipment	4.5	0.06	0.67	4.5
04900	The Okonite Company	33	Primary Metal Industries	4.2	0.09	1.6	4.2
00027	Chevron - Carpinteria	13	Oil And Gas Extraction	3.9	2.0	0.40	3.9
10461	Wood Glen Hall	83	Social Services	3.8	0.05	0.82	3.8
10239	ERG Resources - Tompkins	13	Oil And Gas Extraction	3.8	0.49	0.44	3.8
10593	Jackson Family Wines	20	Food And Kindred Products	3.7	0.00	0.03	3.7
10911	ERG Resources - Cat Canyon Central	13	Oil And Gas Extraction	3.6	0.47	0.43	3.6
01847	Mission Uniform Service	72	Personal Services	3.4	0.07	1.1	3.4
01967	Texican Delaney/Tunnel	13	Oil And Gas Extraction	3.2	0.39	0.38	3.2
08809	Los Alamos	13	Oil And Gas Extraction	3.1	0.34	0.30	3.1
03015	Zog Industries	39	Miscellaneous Manufacturing Industries	3.0	0.00	0.15	3.0
11185	Bradbury Dam	95	Environmental Quality And Housing	2.9	0.00	0.02	2.9
10591	Friendship Manor, Inc.	83	Social Services	2.7	0.06	1.04	2.7
05009	Careaga #1	13	Oil And Gas Extraction	2.7	0.34	0.31	2.7
03695	Santa Barbara Sand & Top Soil - Ellwood	14	Nonmetallic Minerals, Except Fuels	0.97	0.19	2.7	2.7
10935	La Cumbre Junior High School	82	Educational Services	2.6	0.06	1.01	2.6
02068	Santa Maria Joint Union High School	82	Educational Services	2.6	0.06	1.01	2.6
10904	Sansum - Main Clinic	80	Health Services	2.6	0.04	0.73	2.6
10825	Paul Nelson Aquatic Center	79	Amusement & Recreation Services	2.6	0.06	0.99	2.6
11201	Titan Frozen Fruit	20	Food And Kindred Products	2.5	0.06	0.97	2.5
10934	San Marcos High School	82	Educational Services	2.5	0.06	0.95	2.5

Attachment B

Preliminary Prioritization Scores

SSID	Stationary Source Name	SIC Code	SIC Name	SBCAPCD Cancer Score	SBCAPCD Acute Score	SBCAPCD Chronic Score	SBCAPCD Final Score
09993	Braker Nano, Inc.	38	Instruments And Related Products	2.4	0.00	0.02	2.4
03720	Parks Land & Cattle - Las Varas Canyon	14	Nonmetallic Minerals, Except Fuels	0.89	0.17	2.4	2.4
10912	CA Resources Production Corp Central Cat Canyon	13	Oil And Gas Extraction	2.4	0.31	0.28	2.4
05006	Conway - Waite Bradley/Brookings Lease	13	Oil And Gas Extraction	2.4	0.06	0.56	2.4
01845	Mission Hills Community Services District	49	Electric, Gas, And Sanitary Services	2.4	1.3	0.95	2.4
02784	United States Navy - Santa Cruz Island	97	National Security And Intl. Affairs	2.2	0.01	0.06	2.2
01528	Goleta Sanitary District WWTP	49	Electric, Gas, And Sanitary Services	2.2	0.14	0.10	2.2
10350	Westmont College	82	Educational Services	2.1	0.05	0.80	2.1
02000	Calle Cesar Chavez, 22 N.	55	Automotive Dealers & Service Stations	2.0	0.00	0.01	2.0
01680	SBC, Laguna Sanitation District WWTP	49	Electric, Gas, And Sanitary Services	2.0	0.04	0.04	2.0
11220	PRE Resources - SMV East	13	Oil And Gas Extraction	1.9	0.24	0.23	1.9
05032	Continental	13	Oil And Gas Extraction	1.9	0.24	0.22	1.9
11229	Santa Barbara Main Post Office	43	U.s. Postal Service	1.8	0.04	0.69	1.8
10928	City of Lompoc - Airport	45	Transportation By Air	1.7	0.00	0.01	1.7
11061	Sprint Nextel - Cell Site CA5493	48	Communication	1.6	0.00	0.01	1.6
10600	Firestone Vineyard	20	Food And Kindred Products	1.5	0.00	0.01	1.5
03854	Conway - Newhall Lease	13	Oil And Gas Extraction	1.5	0.47	0.23	1.5
08642	Mission Linen Supply	72	Personal Services	1.4	0.03	0.54	1.4
10746	Terravant Wine Company - 35 Industrial Way	20	Food And Kindred Products	1.4	0.00	0.01	1.4
08800	Santa Maria Pump Station	13	Oil And Gas Extraction	1.3	0.13	0.25	1.3
08933	SM Airport - Central Coast Jet Center (Bulk)	45	Transportation By Air	1.2	0.00	0.01	1.2
11146	Space Exploration Technologies	47	Transportation Services	1.2	0.00	0.01	1.2
02814	Mission Linen Service	72	Personal Services	1.2	0.03	0.46	1.2
01702	CalPortland Construction - A St, Lompoc	14	Nonmetallic Minerals, Except Fuels	1.2	0.01	1.2	1.2
03736	Armelin	13	Oil And Gas Extraction	1.03	0.13	0.12	1.03
10180	Cree, Inc.	36	Electronic & Other Electric Equipment	0.99	0.01	0.01	0.99
11211	Four Deer Field	13	Oil And Gas Extraction	0.98	0.13	0.11	0.98
10579	Cate School	82	Educational Services	0.91	0.00	0.01	0.91
04487	Freudenberg Medical	38	Instruments And Related Products	0.91	0.30	0.02	0.91
03778	DenMat Holdings, LLC.	38	Instruments And Related Products	0.89	0.04	0.01	0.89
08805	So Cal Gas - O&M Station Orcutt	13	Oil And Gas Extraction	0.88	0.11	0.10	0.88
02060	County of Santa Barbara - Courthouse	92	Justice, Public Order, And Safety	0.84	0.00	0.04	0.84
02405	So Cal Gas - Pitas Point	13	Oil And Gas Extraction	0.83	0.11	0.10	0.83
08842	So Cal Gas - Pressure Limiting Station	49	Electric, Gas, And Sanitary Services	0.77	0.08	0.09	0.77
11193	RMR Cat Canyon	13	Oil And Gas Extraction	0.75	0.10	0.09	0.75
10273	Santa Maria Energy - Casmalia Field NW	13	Oil And Gas Extraction	0.71	0.09	0.08	0.71
08644	So Cal Gas - Cuyama Gas Plant 10	13	Oil And Gas Extraction	0.62	0.08	0.07	0.62
01794	L-3 Maripro	36	Electronic & Other Electric Equipment	0.60	0.00	0.01	0.60
02406	So Cal Gas - Carpinteria	13	Oil And Gas Extraction	0.57	0.07	0.07	0.57

Attachment B

Preliminary Prioritization Scores

SSID	Stationary Source Name	SIC Code	SIC Name	SBCAPCD Cancer Score	SBCAPCD Acute Score	SBCAPCD Chronic Score	SBCAPCD Final Score
10884	Sure-Fresh Produce	20	Food And Kindred Products	0.55	0.01	0.21	0.55
01439	Off Broadway Mineral	13	Oil And Gas Extraction	0.51	0.07	0.06	0.51
01473	Easter Rents	14	Nonmetallic Minerals, Except Fuels	0.46	0.00	0.11	0.46
10885	Pioneer Valley High School	82	Educational Services	0.41	0.01	0.16	0.41
02411	So Cal Gas - Divide Regulator Station	13	Oil And Gas Extraction	0.33	0.04	0.04	0.33
02408	So Cal Gas - Ellwood	13	Oil And Gas Extraction	0.29	0.04	0.03	0.29
10371	Lash/Screen - Various Locations	32	Stone, Clay, And Glass Products	0.11	0.02	0.29	0.29
01403	Conway - Goodwin	13	Oil And Gas Extraction	0.26	0.03	0.03	0.26
01503	E & B Nat Resources - Cuyama Pump Station	13	Oil And Gas Extraction	0.23	0.03	0.03	0.23
04406	Lompoc Unified School District	82	Educational Services	0.17	0.00	0.00	0.17
11349	Invenios - Castilian	36	Electronic & Other Electric Equipment	0.17	0.00	0.00	0.17
10369	Solvang Lutheran Home, Inc.	80	Health Services	0.16	0.00	0.00	0.16
01294	Channel Industries	36	Electronic & Other Electric Equipment	0.05	0.04	0.07	0.14
02381	Ellwood Generating Station	49	Electric, Gas, And Sanitary Services	0.13	0.02	0.02	0.13
10581	G. Antolini & Son	14	Nonmetallic Minerals, Except Fuels	0.12	0.00	0.00	0.12
03867	Zodiac Seat Shells, LLC. - 2641 Airpark Drive	37	Transportation Equipment	0.00	0.12	0.01	0.12
11364	Las Flores Pump Station	46	Pipelines, Except Natural Gas	0.11	0.01	0.01	0.11
01017	Sisquoc Pump Station	13	Oil And Gas Extraction	0.11	0.01	0.01	0.11
10836	Golden State Water Co. - 4949 Foxen Canyon	49	Electric, Gas, And Sanitary Services	0.09	0.00	0.00	0.09
11306	Steadfast Carpinteria Senior, LLC.	83	Social Services	0.09	0.00	0.00	0.09
11148	C&D Zodiac, Inc. - 2850 Skyway Drive	37	Transportation Equipment	0.00	0.08	0.00	0.08
10248	Chevron Phillips Odorant Truck	13	Oil And Gas Extraction	0.08	0.01	0.01	0.08
04412	The Pictsweet Company	54	Food Stores	0.07	0.00	0.03	0.07
01717	Atlas Copco Mafi-Trench Company LLC	16	Heavy Construction, Ex. Building	0.05	0.01	0.06	0.06
04635	Medtronic	39	Miscellaneous Manufacturing Industries	0.00	0.00	0.04	0.04
10871	C&D Zodiac, Inc. - 2625 Skyway Drive	93	Finance, Taxation, & Monetary Policy	0.00	0.04	0.00	0.04
11105	Insituform Technologies, LLC.	30	Rubber And Misc. Plastics Products	0.04	0.00	0.01	0.04
10197	DuPont Displays-600 Ward Drive	36	Electronic & Other Electric Equipment	0.00	0.04	0.00	0.04
10216	Castillo Ross & Howe Lease	13	Oil And Gas Extraction	0.03	0.00	0.00	0.03
11363	Gaviota Pump Station	46	Pipelines, Except Natural Gas	0.03	0.00	0.00	0.03
02987	Sisquoc Pipeline	13	Oil And Gas Extraction	0.03	0.00	0.00	0.03
04621	NuSil Technology	38	Instruments And Related Products	0.00	0.00	0.03	0.03
11330	American Water Operations and Maintenance	49	Electric, Gas, And Sanitary Services	0.03	0.00	0.00	0.03
11353	Sonatech	36	Electronic & Other Electric Equipment	0.00	0.02	0.00	0.02
10179	Calient Technologies, Inc	36	Electronic & Other Electric Equipment	0.00	0.02	0.00	0.02
11198	Santa Maria Valley Field	13	Oil And Gas Extraction	0.01	0.00	0.00	0.01
04433	D.R. Radon Boat Building, Inc.	37	Transportation Equipment	0.00	0.00	0.00	0.00
08856	BEGA - U.S. (Via Real)	36	Electronic & Other Electric Equipment	0.00	0.00	0.00	0.00
03689	Lompoc Valley Seed & Milling	51	Wholesale Trade Nondurable Goods	0.00	0.00	0.00	0.00

Attachment B

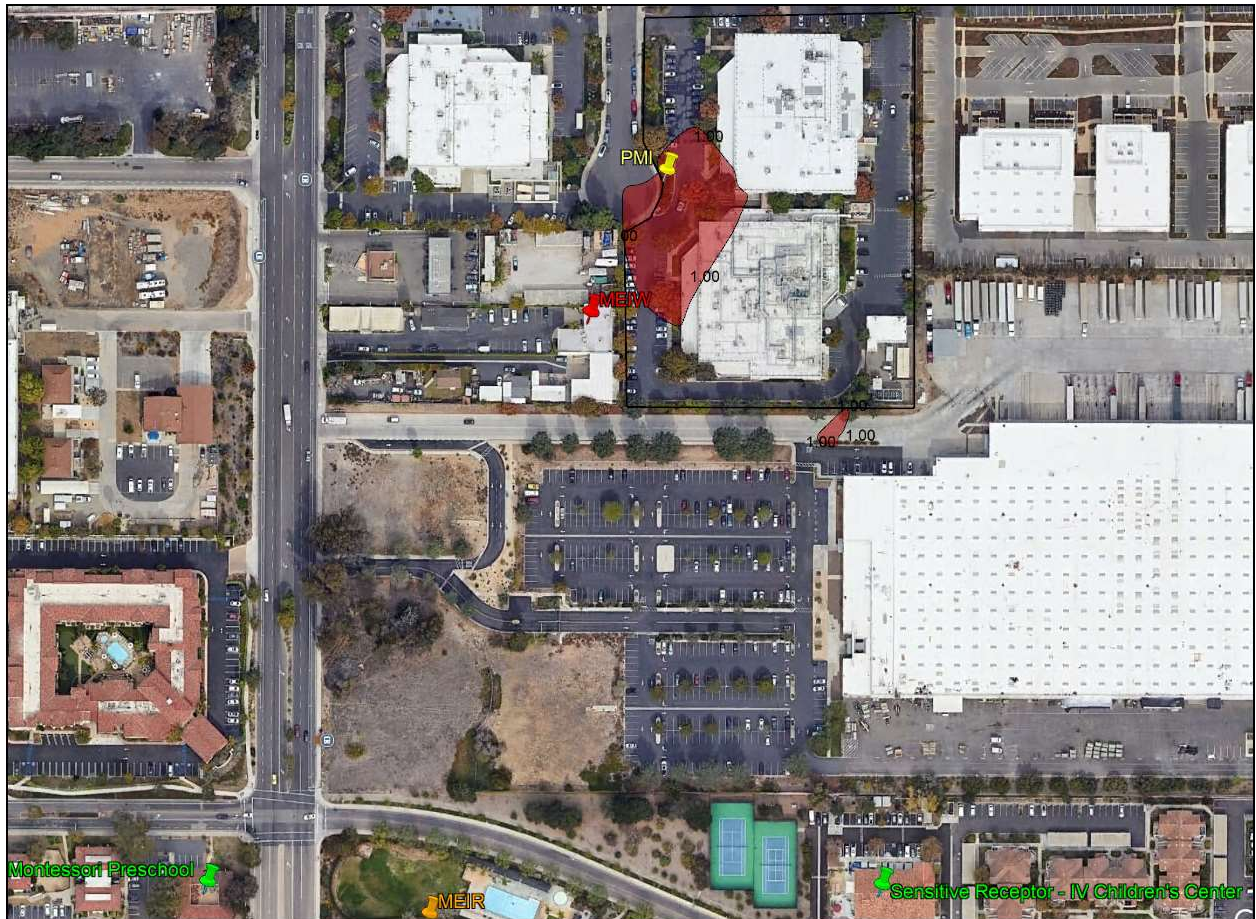
Preliminary Prioritization Scores

SSID	Stationary Source Name	SIC Code	SIC Name	SBCAPCD Cancer Score	SBCAPCD Acute Score	SBCAPCD Chronic Score	SBCAPCD Final Score
10242	Adams Services - Degassing	13	Oil And Gas Extraction	0.00	0.00	0.00	0.00
01152	Bardex Corporation	35	Industrial Machinery And Equipment	0.00	0.00	0.00	0.00
01085	UCSB - Ellwood Marine Terminal	13	Oil And Gas Extraction	0.00	0.00	0.00	0.00
01248	CalMat - Goleta	14	Nonmetallic Minerals, Except Fuels	0.00	0.00	0.00	0.00
03712	Broadway, 1601 N. (MVFF)	55	Automotive Dealers & Service Stations	0.00	0.00	0.00	0.00
08681	Santa Ynez Valley Airport	45	Transportation By Air	0.00	0.00	0.00	0.00
08729	Engel & Gray, Incorporated	17	Special Trade Contractors	0.00	0.00	0.00	0.00
09293	Mentor Worldwide	80	Health Services	0.00	0.00	0.00	0.00
10293	GEM Mobile Treatment Services, Inc.	38	Instruments And Related Products	0.00	0.00	0.00	0.00
10425	Sprint Nextel - Buellton	48	Communication	0.00	0.00	0.00	0.00
10426	Cingular - Goleta	48	Communication	0.00	0.00	0.00	0.00
11077	Hope Reservoir/Campanil Pump Station	00	N/A	0.00	0.00	0.00	0.00
11143	SMV North	13	Oil And Gas Extraction	0.00	0.00	0.00	0.00
11235	Triple J Ready Mix	29	Petroleum And Coal Products	0.00	0.00	0.00	0.00
11238	Southwest Pipeline & Trenchless Corp.	17	Special Trade Contractors	0.00	0.00	0.00	0.00
11274	Thompco Inc.	13	Oil And Gas Extraction	0.00	0.00	0.00	0.00
11280	Harvest Rentals	73	Business Services	0.00	0.00	0.00	0.00
11283	Gold Coast Packing	07	Agricultural Services	0.00	0.00	0.00	0.00
11327	California Pro Painting	17	Special Trade Contractors	0.00	0.00	0.00	0.00
11358	County of Santa Barbara North Jail	92	Justice, Public Order, And Safety	0.00	0.00	0.00	0.00
11374	Figueroa Mountain Brewing	20	Food And Kindred Products	0.00	0.00	0.00	0.00

Attachment C

LOCKHEED MARTIN MISSILES AND FIRE CONTROL SANTA BARBARA FOCALPLANE

SCREENING ACUTE NON-CANCER RISK ISOPLETH



SCREENING 1.0 HAZARD INDEX ISOPLETH IN RED
PROPERTY BOUNDARY IN BLACK
POINT OF MAXIMUM IMPACT (PMI) IN YELLOW
MAXIMALLY EXPOSED INDIVIDUAL RESIDENT (MEIR) IN ORANGE
MAXIMALLY EXPOSED INDIVIDUAL WORKER (MEIW) IN RED
SENSITIVE RECEPTORS IN GREEN